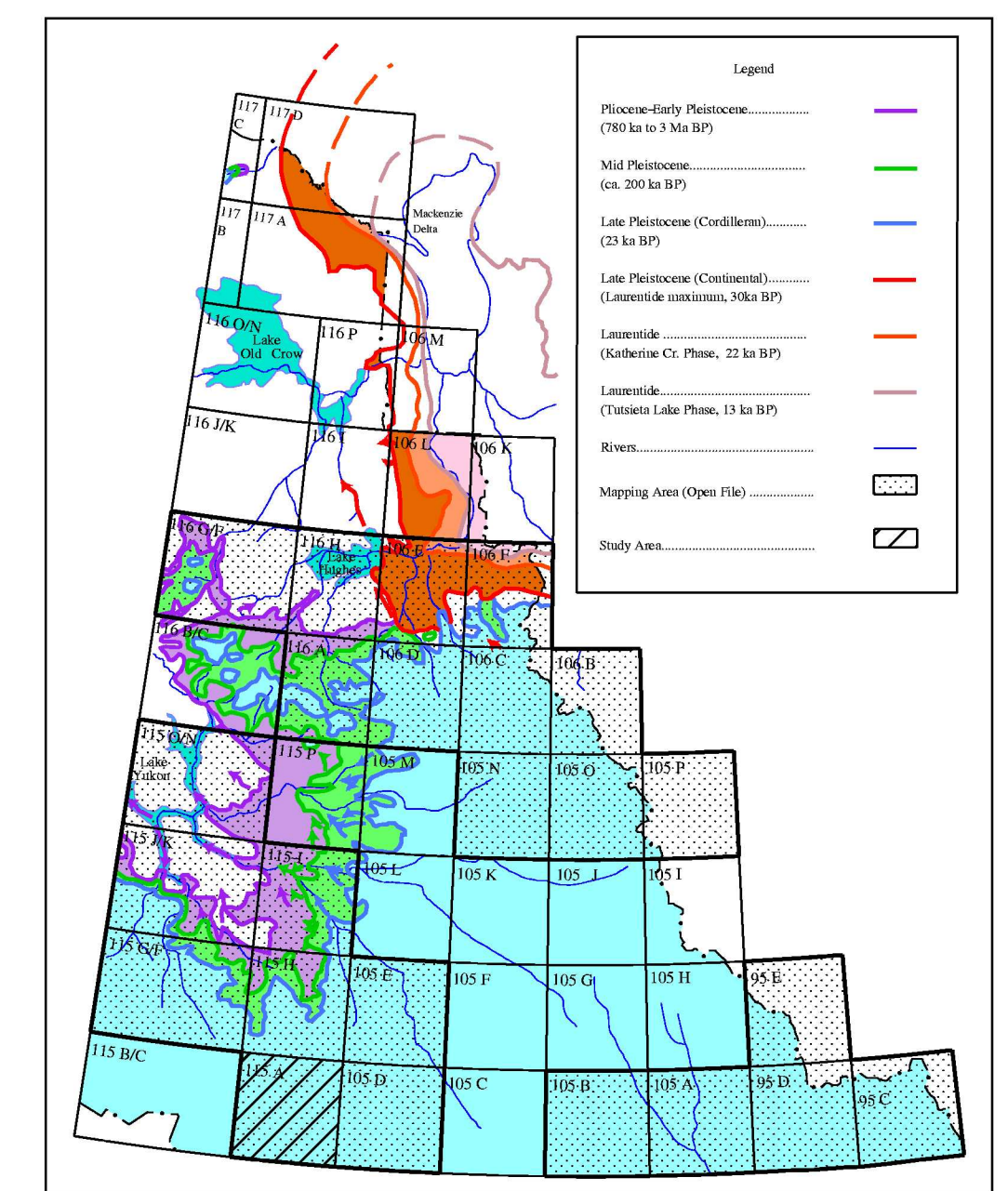


LEGEND GLACIAL LIMITS MAP OF YUKON
(Common Legend for open files in Index Map)

Holocene	
Glacial limit (established, interpolated, estimated)	—
Late Pleistocene	
Cordilleran and montane glacial features (ca. 22 ka)	
Glacial limit (established, interpolated, estimated)	—
Glaciofluvial delta or fan	▲
Meltwater channel (minor, major)	—
Erratic	▲
Laurentide	
Tutsieta Lake Phase Limit (ca. 13 ka Bp)	—
Katherine Creek Phase Limit (ca. 22 ka)	—
All time limit (ca. 30 ka) (established, interpolated, estimated)	—
Meltwater channel (minor, major)	—
Glaciofluvial delta or fan	▲
Erratic	▲
Glacial Lake Hughes (estimated)	▲
Middle Pleistocene (ca. 200 ka)	
Glacial limit (established, interpolated, estimated)	—
Meltwater channel (minor, major)	—
Glaciofluvial delta or fan	▲
Erratic	▲
Pliocene to early Pleistocene (from ca. 3 Ma)	
Glacial limit (established, interpolated, estimated)	—
Meltwater channel (minor, major)	—
Glaciofluvial delta or fan	▲
Erratic	▲
Local ice cap	○
Glacial Lake Yukon (estimated)	▲
Uncorrelated glacial features	
Meltwater channel	—
Erratic	▲
Cirques	○
Yukon/N.W.T. boundary	—



Index and Glacial Limits Map of Yukon
 Airphoto interpretation by A. Duk-Rodkin, 1998.
 Digital compilation by D. Nunez

NTS 115 A
 GLACIAL LIMITS
DEZADEASH
 WEST OF SIXTH MERIDIAN
 YUKON TERRITORY

Scale 1:250 000/Échelle 1/250 000
 kilometres 5 0 5 10 15 20 kilometres
 Transverse Mercator Projection
 North American Datum 1927
 © Her Majesty the Queen in Right of Canada, 2001
 Projection transverse de Mercator
 Système de référence géodésique nord-américain, 1927
 © Sa Majesté la Reine du chef du Canada, 2001

**OPEN FILE
 DOSSIER PUBLIC
 3809**
 GEOLOGICAL SURVEY OF CANADA
 COMMISSION GÉOLOGIQUE DU CANADA
 OTTAWA
 05/2001