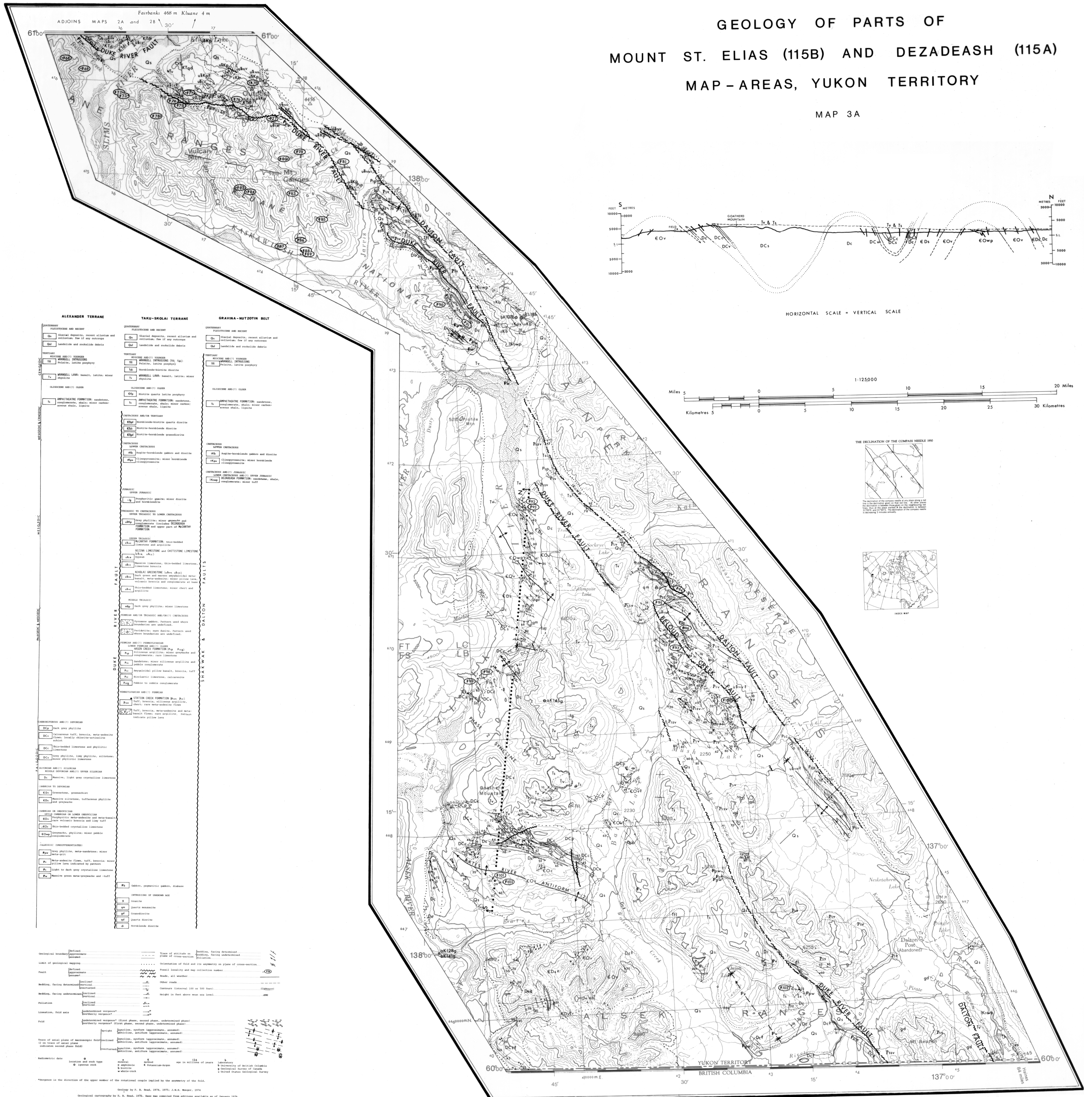


GEOLOGY OF PARTS OF MOUNT ST. ELIAS (115B) AND DEZADEASH (115A) MAP - AREAS, YUKON TERRITORY

MAP 3A



ALEXANDER TERRANE		TAKU-SKOLOAI TERRANE		GRAVINA-NUTZOTIN BELT	
CRETACEOUS AND MIOCENE	PERMIAN AND MIOCENE	CRETACEOUS AND MIOCENE	PERMIAN AND MIOCENE	CRETACEOUS AND MIOCENE	PERMIAN AND MIOCENE
Q ₁ Quaternary deposits, recent alluvium and colluvium, fine if any subangular	Q ₂ Quaternary deposits, recent alluvium and colluvium, fine if any subangular	Q ₁ Quaternary deposits, recent alluvium and colluvium, fine if any subangular	Q ₂ Quaternary deposits, recent alluvium and colluvium, fine if any subangular	Q ₁ Quaternary deposits, recent alluvium and colluvium, fine if any subangular	Q ₂ Quaternary deposits, recent alluvium and colluvium, fine if any subangular
Q ₃ Sandstone and siltstone	Q ₃ Sandstone and siltstone	Q ₃ Sandstone and siltstone	Q ₃ Sandstone and siltstone	Q ₃ Sandstone and siltstone	Q ₃ Sandstone and siltstone
MIOCENE AND OLIGOCENE	MIOCENE AND OLIGOCENE	MIOCENE AND OLIGOCENE	MIOCENE AND OLIGOCENE	MIOCENE AND OLIGOCENE	MIOCENE AND OLIGOCENE
M ₁ Miocene, lacustrine pebbles	M ₁ Miocene, lacustrine pebbles	M ₁ Miocene, lacustrine pebbles	M ₁ Miocene, lacustrine pebbles	M ₁ Miocene, lacustrine pebbles	M ₁ Miocene, lacustrine pebbles
M ₂ Miocene, lacustrine pebbles	M ₂ Miocene, lacustrine pebbles	M ₂ Miocene, lacustrine pebbles	M ₂ Miocene, lacustrine pebbles	M ₂ Miocene, lacustrine pebbles	M ₂ Miocene, lacustrine pebbles
M ₃ Miocene, lacustrine pebbles	M ₃ Miocene, lacustrine pebbles	M ₃ Miocene, lacustrine pebbles	M ₃ Miocene, lacustrine pebbles	M ₃ Miocene, lacustrine pebbles	M ₃ Miocene, lacustrine pebbles
OLIGOCENE AND Eocene	OLIGOCENE AND Eocene	OLIGOCENE AND Eocene	OLIGOCENE AND Eocene	OLIGOCENE AND Eocene	OLIGOCENE AND Eocene
O ₁ Oligocene, lacustrine pebbles	O ₁ Oligocene, lacustrine pebbles	O ₁ Oligocene, lacustrine pebbles	O ₁ Oligocene, lacustrine pebbles	O ₁ Oligocene, lacustrine pebbles	O ₁ Oligocene, lacustrine pebbles
O ₂ Oligocene, lacustrine pebbles	O ₂ Oligocene, lacustrine pebbles	O ₂ Oligocene, lacustrine pebbles	O ₂ Oligocene, lacustrine pebbles	O ₂ Oligocene, lacustrine pebbles	O ₂ Oligocene, lacustrine pebbles
PERMIAN AND MIOCENE	PERMIAN AND MIOCENE	PERMIAN AND MIOCENE	PERMIAN AND MIOCENE	PERMIAN AND MIOCENE	PERMIAN AND MIOCENE
P ₁ Permian, lacustrine pebbles	P ₁ Permian, lacustrine pebbles	P ₁ Permian, lacustrine pebbles	P ₁ Permian, lacustrine pebbles	P ₁ Permian, lacustrine pebbles	P ₁ Permian, lacustrine pebbles
P ₂ Permian, lacustrine pebbles	P ₂ Permian, lacustrine pebbles	P ₂ Permian, lacustrine pebbles	P ₂ Permian, lacustrine pebbles	P ₂ Permian, lacustrine pebbles	P ₂ Permian, lacustrine pebbles
TRIASSIC	TRIASSIC	TRIASSIC	TRIASSIC	TRIASSIC	TRIASSIC
T ₁ Triassic, lacustrine pebbles	T ₁ Triassic, lacustrine pebbles	T ₁ Triassic, lacustrine pebbles	T ₁ Triassic, lacustrine pebbles	T ₁ Triassic, lacustrine pebbles	T ₁ Triassic, lacustrine pebbles
T ₂ Triassic, lacustrine pebbles	T ₂ Triassic, lacustrine pebbles	T ₂ Triassic, lacustrine pebbles	T ₂ Triassic, lacustrine pebbles	T ₂ Triassic, lacustrine pebbles	T ₂ Triassic, lacustrine pebbles
CRETACEOUS AND MIOCENE	CRETACEOUS AND MIOCENE	CRETACEOUS AND MIOCENE	CRETACEOUS AND MIOCENE	CRETACEOUS AND MIOCENE	CRETACEOUS AND MIOCENE
C ₁ Cretaceous, lacustrine pebbles	C ₁ Cretaceous, lacustrine pebbles	C ₁ Cretaceous, lacustrine pebbles	C ₁ Cretaceous, lacustrine pebbles	C ₁ Cretaceous, lacustrine pebbles	C ₁ Cretaceous, lacustrine pebbles
C ₂ Cretaceous, lacustrine pebbles	C ₂ Cretaceous, lacustrine pebbles	C ₂ Cretaceous, lacustrine pebbles	C ₂ Cretaceous, lacustrine pebbles	C ₂ Cretaceous, lacustrine pebbles	C ₂ Cretaceous, lacustrine pebbles
MIOCENE AND OLIGOCENE	MIOCENE AND OLIGOCENE	MIOCENE AND OLIGOCENE	MIOCENE AND OLIGOCENE	MIOCENE AND OLIGOCENE	MIOCENE AND OLIGOCENE
M ₁ Miocene, lacustrine pebbles	M ₁ Miocene, lacustrine pebbles	M ₁ Miocene, lacustrine pebbles	M ₁ Miocene, lacustrine pebbles	M ₁ Miocene, lacustrine pebbles	M ₁ Miocene, lacustrine pebbles
M ₂ Miocene, lacustrine pebbles	M ₂ Miocene, lacustrine pebbles	M ₂ Miocene, lacustrine pebbles	M ₂ Miocene, lacustrine pebbles	M ₂ Miocene, lacustrine pebbles	M ₂ Miocene, lacustrine pebbles
M ₃ Miocene, lacustrine pebbles	M ₃ Miocene, lacustrine pebbles	M ₃ Miocene, lacustrine pebbles	M ₃ Miocene, lacustrine pebbles	M ₃ Miocene, lacustrine pebbles	M ₃ Miocene, lacustrine pebbles
OLIGOCENE AND Eocene	OLIGOCENE AND Eocene	OLIGOCENE AND Eocene	OLIGOCENE AND Eocene	OLIGOCENE AND Eocene	OLIGOCENE AND Eocene
O ₁ Oligocene, lacustrine pebbles	O ₁ Oligocene, lacustrine pebbles	O ₁ Oligocene, lacustrine pebbles	O ₁ Oligocene, lacustrine pebbles	O ₁ Oligocene, lacustrine pebbles	O ₁ Oligocene, lacustrine pebbles
O ₂ Oligocene, lacustrine pebbles	O ₂ Oligocene, lacustrine pebbles	O ₂ Oligocene, lacustrine pebbles	O ₂ Oligocene, lacustrine pebbles	O ₂ Oligocene, lacustrine pebbles	O ₂ Oligocene, lacustrine pebbles
PERMIAN AND MIOCENE	PERMIAN AND MIOCENE	PERMIAN AND MIOCENE	PERMIAN AND MIOCENE	PERMIAN AND MIOCENE	PERMIAN AND MIOCENE
P ₁ Permian, lacustrine pebbles	P ₁ Permian, lacustrine pebbles	P ₁ Permian, lacustrine pebbles	P ₁ Permian, lacustrine pebbles	P ₁ Permian, lacustrine pebbles	P ₁ Permian, lacustrine pebbles
P ₂ Permian, lacustrine pebbles	P ₂ Permian, lacustrine pebbles	P ₂ Permian, lacustrine pebbles	P ₂ Permian, lacustrine pebbles	P ₂ Permian, lacustrine pebbles	P ₂ Permian, lacustrine pebbles
TRIASSIC	TRIASSIC	TRIASSIC	TRIASSIC	TRIASSIC	TRIASSIC
T ₁ Triassic, lacustrine pebbles	T ₁ Triassic, lacustrine pebbles	T ₁ Triassic, lacustrine pebbles	T ₁ Triassic, lacustrine pebbles	T ₁ Triassic, lacustrine pebbles	T ₁ Triassic, lacustrine pebbles
T ₂ Triassic, lacustrine pebbles	T ₂ Triassic, lacustrine pebbles	T ₂ Triassic, lacustrine pebbles	T ₂ Triassic, lacustrine pebbles	T ₂ Triassic, lacustrine pebbles	T ₂ Triassic, lacustrine pebbles

Geological symbols and abbreviations:

- Geological boundary: Solid line
- Unconformity: Dashed line
- Fault: Dotted line
- Anticline: Line with outward-curving arrows
- Syncline: Line with inward-curving arrows
- Strike-slip fault: Line with perpendicular tick marks
- Normal fault: Line with single tick marks
- Inverse fault: Line with double tick marks
- Geological map scale: 1:125,000

Geological map scale: 1:125,000

Geological map scale: 1:125,000