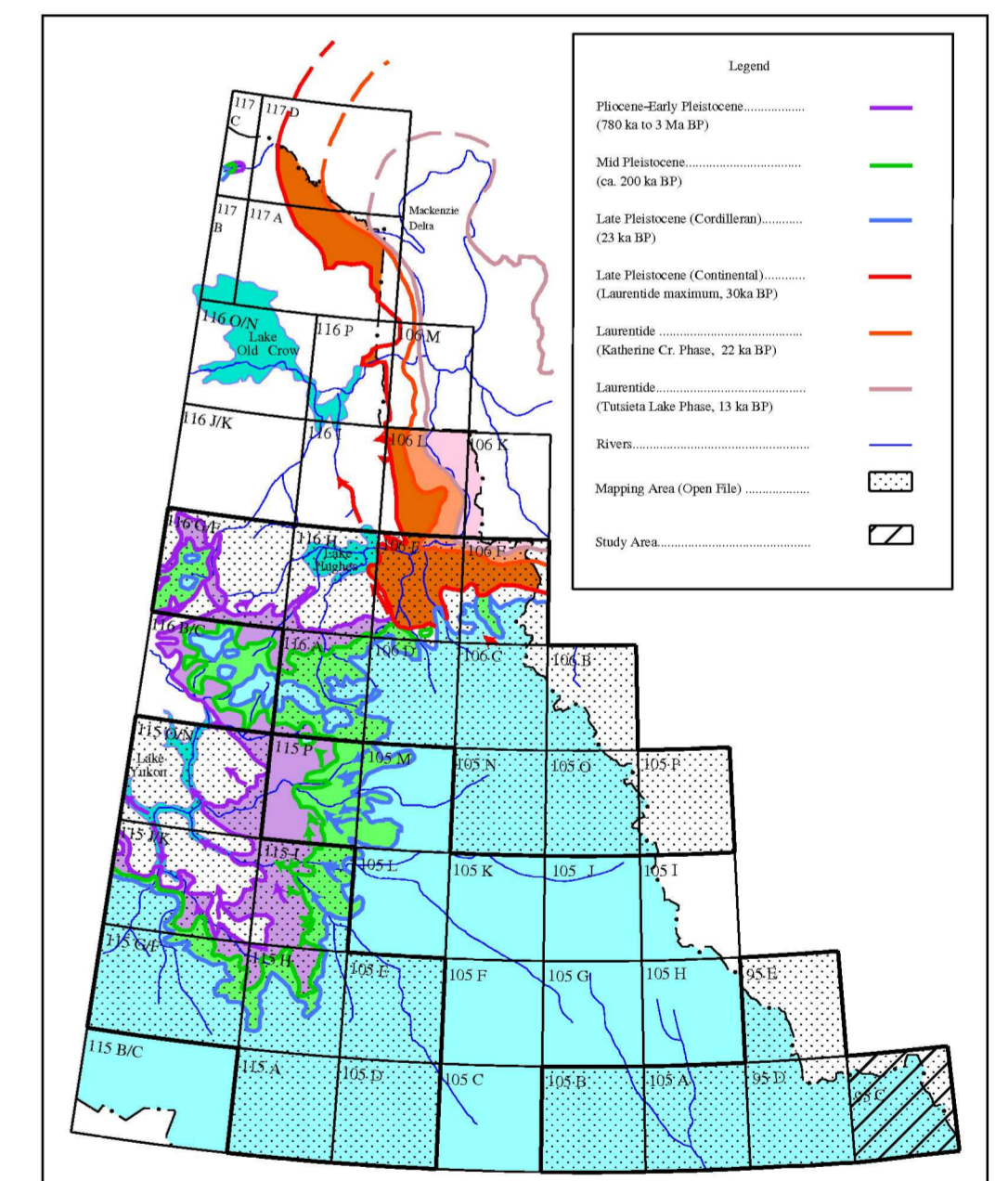


LEGEND GLACIAL LIMITS MAP OF YUKON
(Common Legend for open files in Index Map)

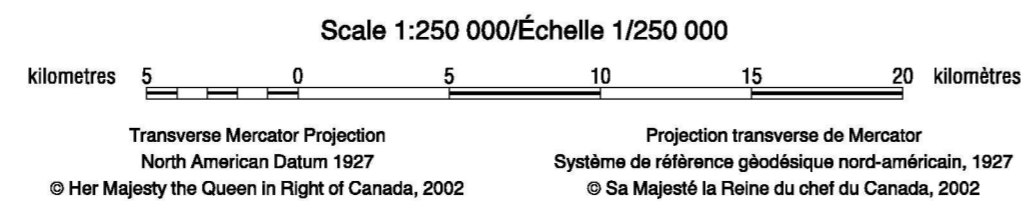
Holocene	
Glacial limit	
Late Pleistocene	
Cordilleran and montane glacial features (ca. 22 ka)	
Glacial limit (established, interpolated, estimated)	
Glaciofluvial delta or fan	
Meltwater channel (minor, major)	
Erratic	
Laurentide	
Tutsiata Lake Phase Limit (ca. 13 ka Bp)	
Katherine Creek Phase Limit (ca. 22 ka)	
All time limit (ca. 30 ka) (established, interpolated, estimated)	
Meltwater channel (minor, major)	
Glaciofluvial delta or fan	
Erratic	
Glacial Lake Hughes (estimated)	
Middle Pleistocene (ca. 200 ka)	
Glacial limit (established, interpolated, estimated)	
Meltwater channel (minor, major)	
Glaciofluvial delta or fan	
Erratic	
Pliocene to early Pleistocene (from ca. 3 Ma)	
Glacial limit (established, interpolated, estimated)	
Meltwater channel (minor, major)	
Glaciofluvial delta or fan	
Erratic	
Local ice cap	
Glacial Lake Yukon (estimated)	
Uncorrelated glacial features	
Meltwater channel	
Erratic	
Cirques	
Yukon/N.W.T. boundary	



Index and Glacial Limits Map of Yukon

Airphoto interpretation by A. Duk-Rodkin, 1998.
Digital compilation by D. Nunez

NTS 95 C
GLACIAL LIMITS
LA BICHE RIVER
WEST OF SIXTH MERIDIAN
YUKON TERRITORY



OPEN FILE
DOSSIER PUBLIC
3814
GEOLOGICAL SURVEY OF CANADA
COMMISSION GÉOLOGIQUE DU CANADA
OTTAWA
2002

Recommended citation:
Duk-Rodkin, A., and Smith, I.R.
2002: Glacial limits of La Biche River,
Yukon Territory (95 C); Geological Survey
of Canada. Open File 3814, scale 1:250 000.