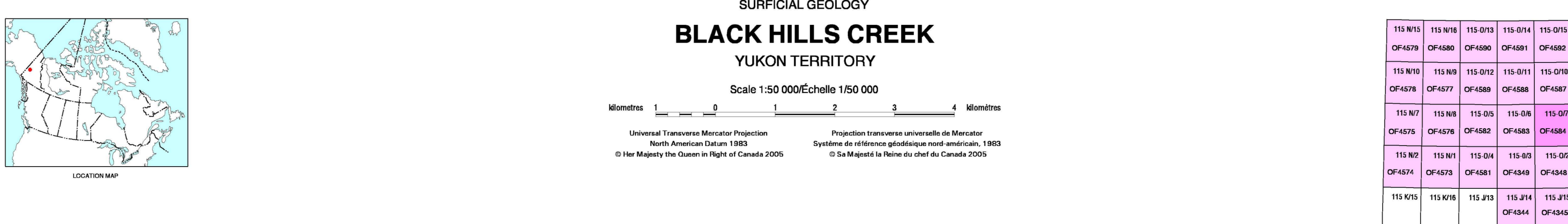
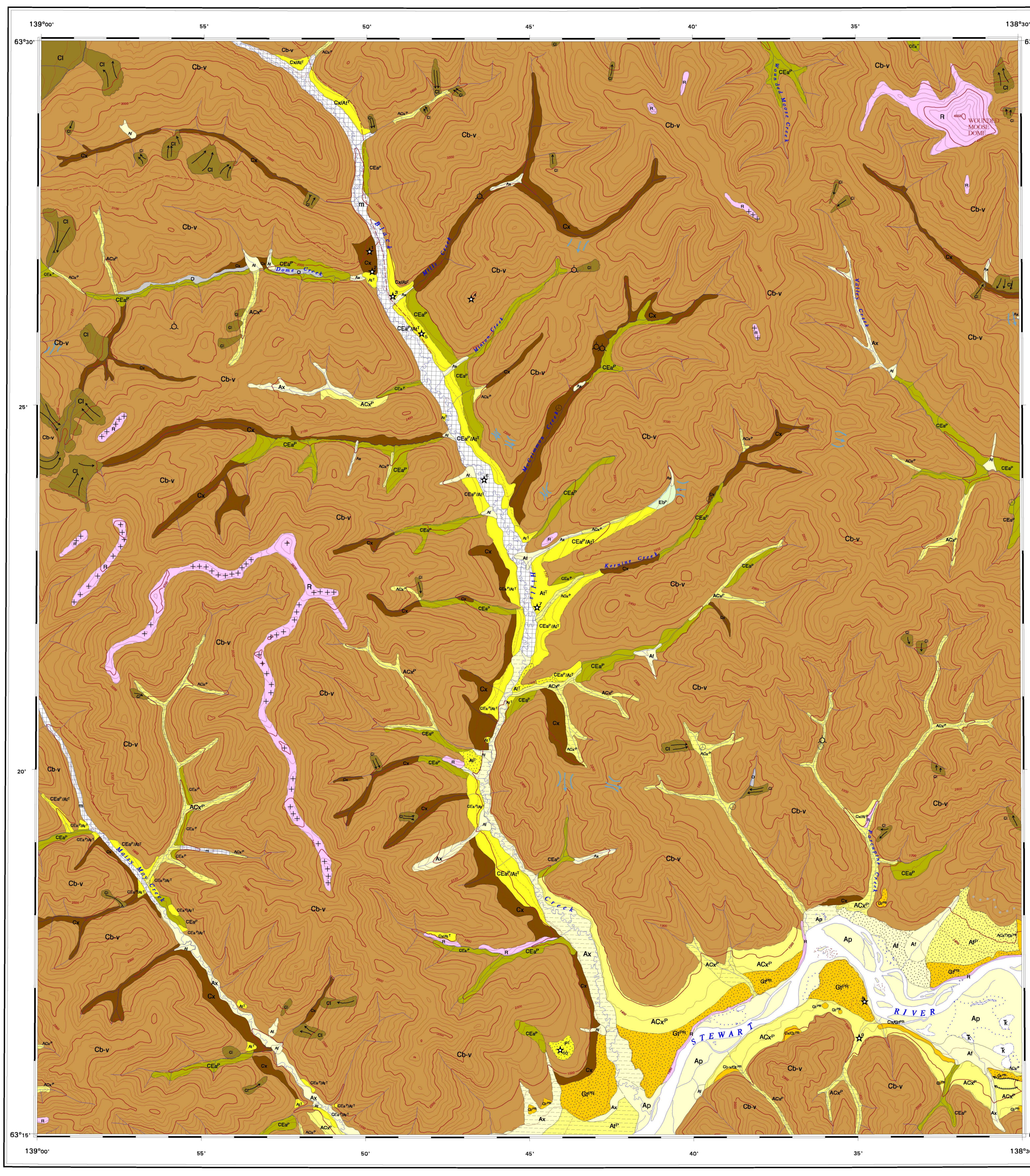


DESCRIPTIVE NOTES: The geology of the Black Hills Creek map area is characterized by steep-sided U-shaped valleys incised to 600 m into a formerly rolling topographic surface of early to middle Tertiary age...

STRATIGRAPHIC LEGEND: Table listing geological units such as Holocene (Cb-v), Late Pleistocene to Early Holocene (ACv), and Pre-glacial (A), with their corresponding symbols and descriptions.



LEGEND: Detailed legend for glacial and alluvial deposits, including Quaternary Holocene (e.g., Q, Qp, Qc, Qd), Middle to Late Pleistocene (e.g., ACv, ACw, ACy), and Late Pleistocene to Early Holocene (e.g., Gq, Gm, Gp, Gq).

SYMBOLS: Geologic contact, defined, inferred; Open system, polycolloidal open system pingo; Thermokarst collapse valley; Landslide movement direction in bedrock and colluvium; Scores created by widespread landslides movement in drift; Reverse scarp slope on graded valley; Degraded Cirque scarves along pre-Ried Glaciation; Deproglacial Active during pre-Ried Glaciation; Malaise channel; Flow direction, unknown flow direction; Large malaise channel; All time pre-Ried glacial, defined, inferred; Cryoplanation terrace; Tor; Landform Overlain by glacial ice; Variscan fault locally; Stratigraphic contact; Fault trace; Unconformity (Belt, before Jura) generally defined by lower drainage courses, sigmoid gaps in stratigraphy; Malaise valley, polycolloidal; Abandoned valley, polycolloidal; Paleochannel, suspected buried valley; Rock glacier.

OPEN FILE DOSSIER BREVÉ 4584: Open file and products that have not yet been published in a final report.



Recommended citation: Jackson, L.E., Jr., 2005. Surficial Geology, BLACK HILLS CREEK, Yukon Territory. Geological Survey of Canada, Open File 4584, scale 1:50,000.