

Sample Locations

Stream Sediments and Stream Waters

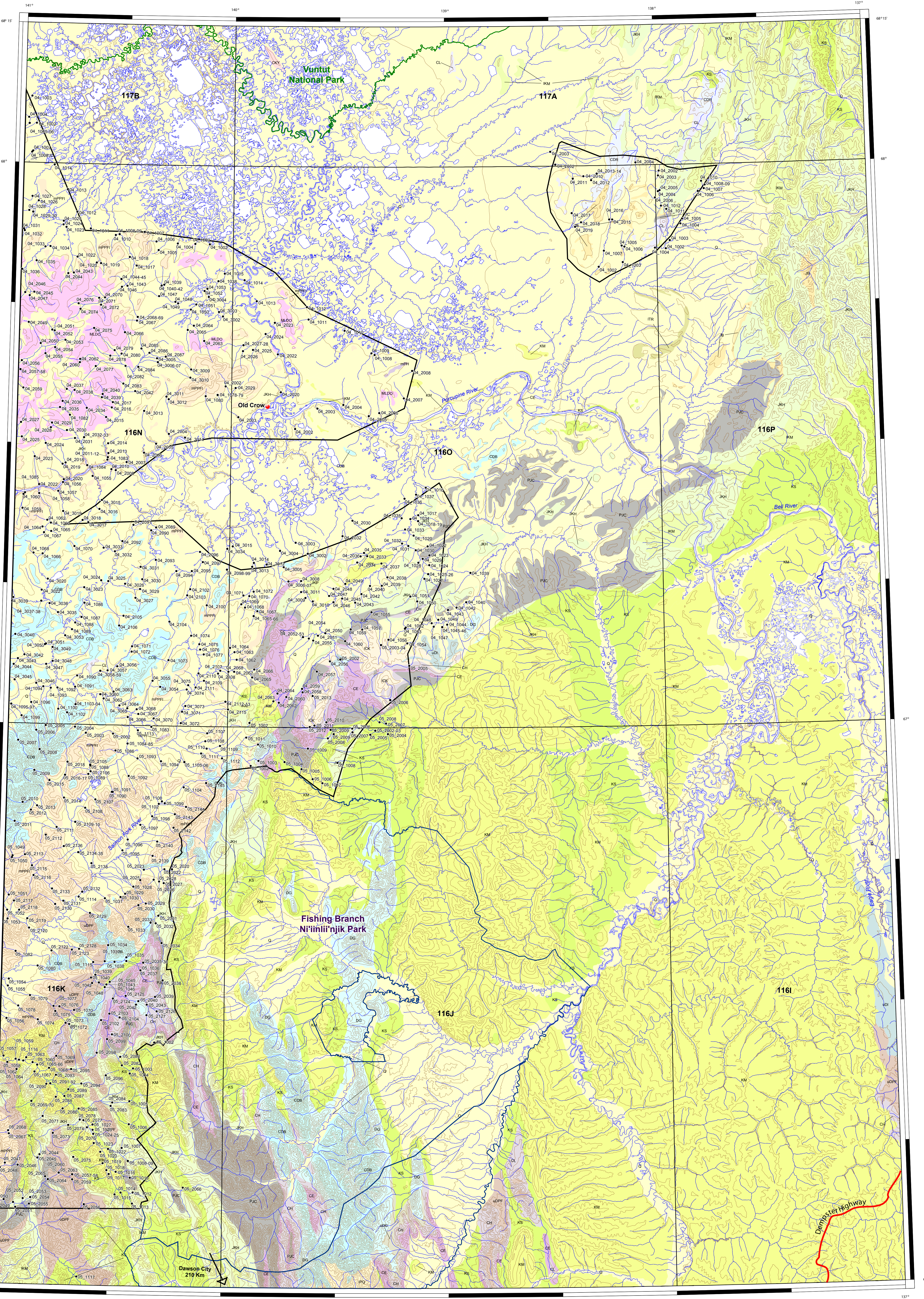
Old Crow, Yukon Territory (Parts of NTS 116J, 116K, 116N, 116O, 116P, 117A, 117B)



Geological Survey of Canada
Open File Report 5319



Yukon Geological Survey
Open File Report 2006-17



Regional stream sediment and water surveys were carried out in northwest Yukon Territory in 2004 and 2005, under a Joint Research Agreement between the Yukon Government (Oil & Gas and Mineral Resources Division of the Department of Economic, Energy and Resources) and the Federal Government, acting through the Earth Science Sector's Metals in the Environment Program.

The northwest Yukon Territory survey areas lay east and south of Old Crow, a community located 550 km north-northwest of Whitehorse (Fig. 1).

Analytical data accompany this document for 49 elements in stream sediments, 50 elements in heavy mineral concentrates, and 60 variables in waters from a total of 655 sites sampled in 2004 and 2005.

