

COORDINATES FOR CROSS-SECTION LINES

Sheldon Lake (105J): UTM Zone 9, NAD83  
 Easting: Northing

SECTION JK  
 J: 361202, 6581787  
 K: 392929, 6917203

SECTION LM  
 L: 336700, 6935006  
 M: 449006, 6979399

SECTION KOP  
 N: 404476, 6875228  
 O: 417774, 6962772  
 P: 448522, 6964155

Tay River (105K): UTM Zone 8, NAD83  
 Easting: Northing

SECTION AS  
 A: 551442, 6954978  
 B: 583717, 6986654

SECTION CD  
 C: 586132, 6874823  
 D: 583818, 6897637

SECTION DEF  
 E: 583818, 6897637  
 F: 602626, 6897981  
 G: 605171, 6998982

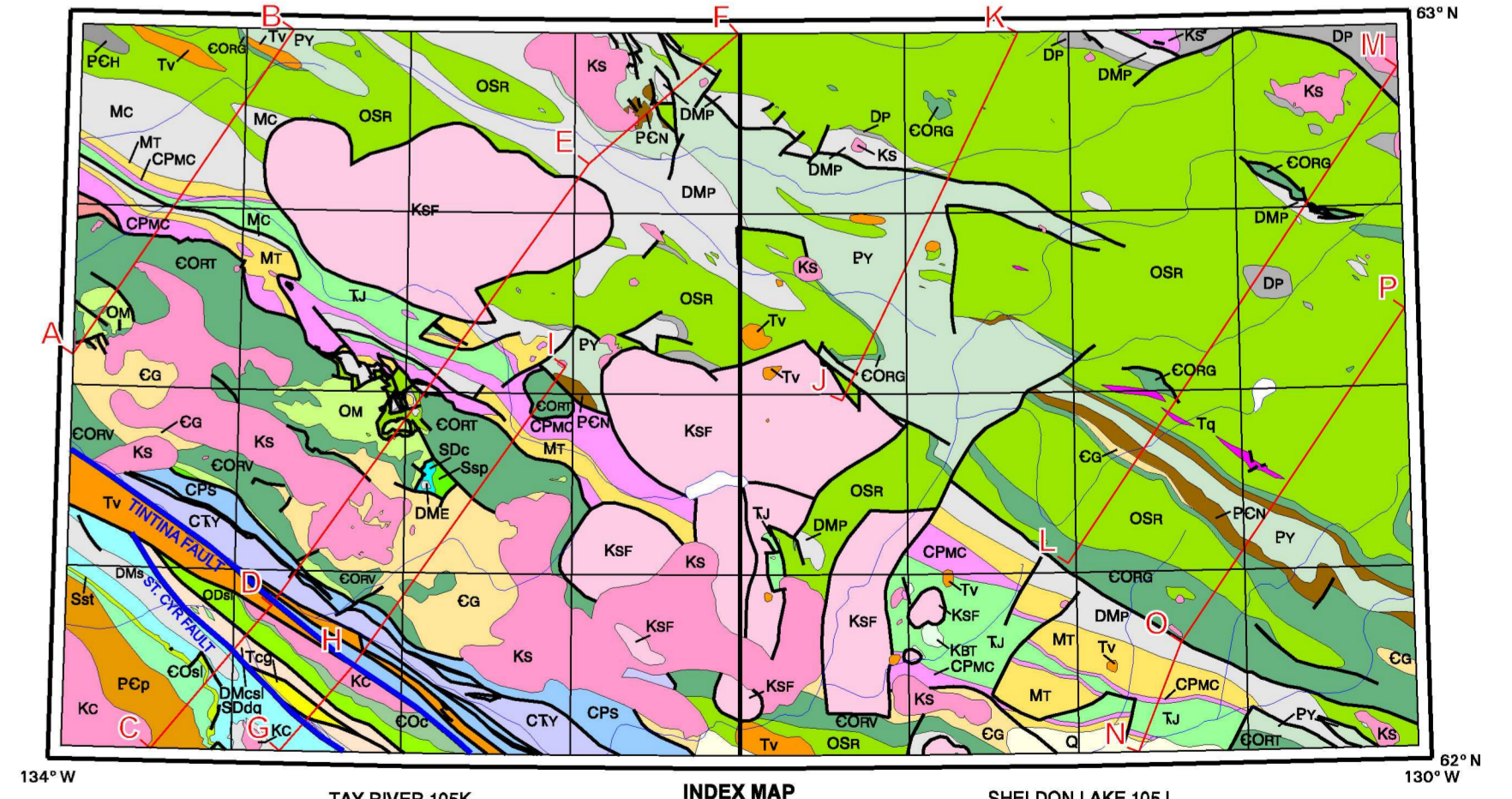
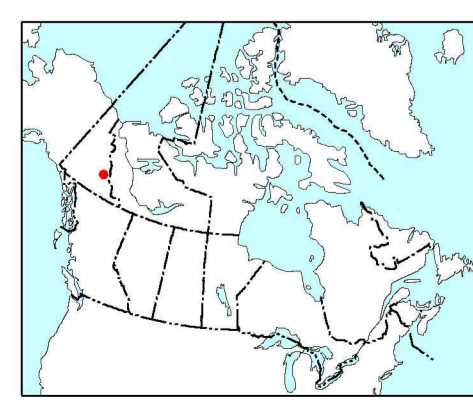
SECTION GH  
 H: 586092, 6878275  
 I: 586827, 6986520  
 J: 627439, 6936569

OPEN FILE 5438  
 GEOLOGY  
**SELWYN BASIN  
 (105J AND 105K)**  
 YUKON  
 CROSS-SECTIONS

Scale 1:100 000/Echelle 1/100 000  
 Kilomètres / Miles

© Her Majesty the Queen in Right of Canada 2008 / © Sa Majesté la Reine du chef du Canada 2008

(For comprehensive legend see sheet 2, Tay River 105K)  
 No vertical exaggeration / Aucune exagération verticale



OPEN FILE  
 DOSSIER PUBLIC  
**5438**  
 GEOLOGICAL SURVEY OF CANADA  
 COMMISSION GÉOLOGIQUE DU CANADA  
 2008  
 SHEET 3 OF 3  
 FEUILLET 3 DE 3

Sheet 3 of 3: Cross-sections  
 Recommended citation:  
 Gaudet, S.P.  
 2008. Geology, Selwyn Basin, (105J and 105K), Yukon;  
 Geological Survey of Canada, Open File 5438, 2 maps at  
 1:250 000 scale and 1 sheet cross-sections at 1:100 000 scale.