

Figure 5. Location of the Quiet Lake and Finlayson Lake map areas in relation to the five main subdivisions of the Canadian Cordillera [base map from Gabrielse and Yorath, 1993; alternate belts are shaded].

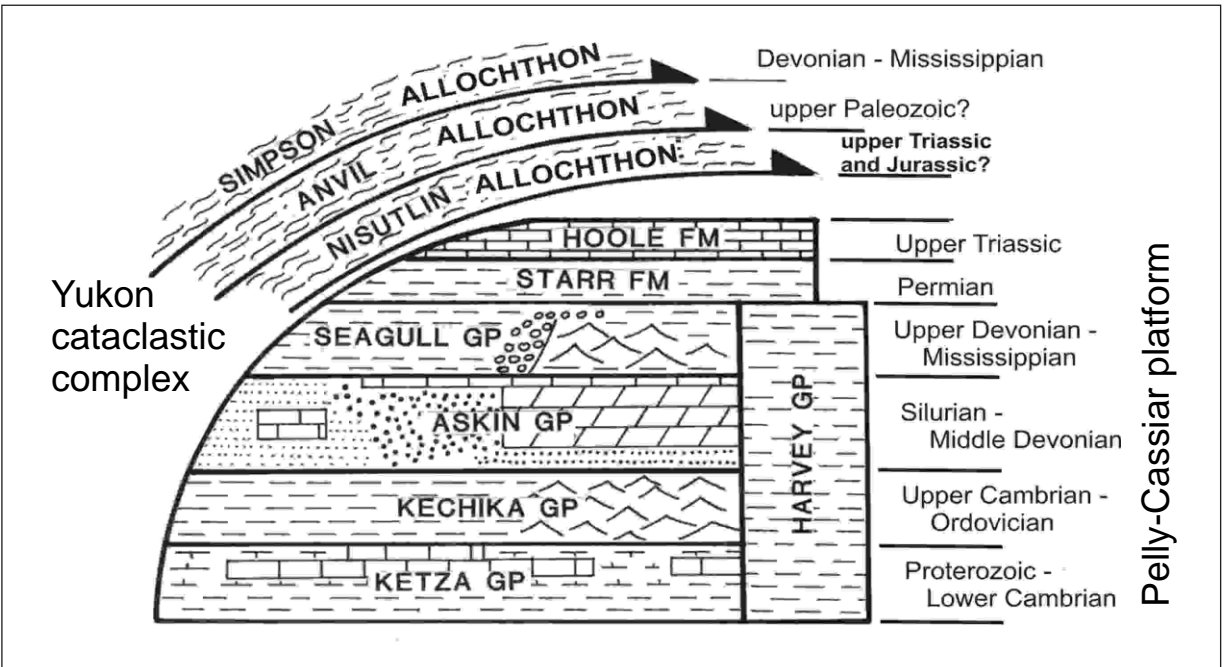


Figure 6a. Schematic relations of the main divisions of the autochthonous strata (Pelly-Cassiar platform) and allochthonous units (Yukon cataclastic complex) in Quiet Lake and Finlayson Lake map areas. [original figure]