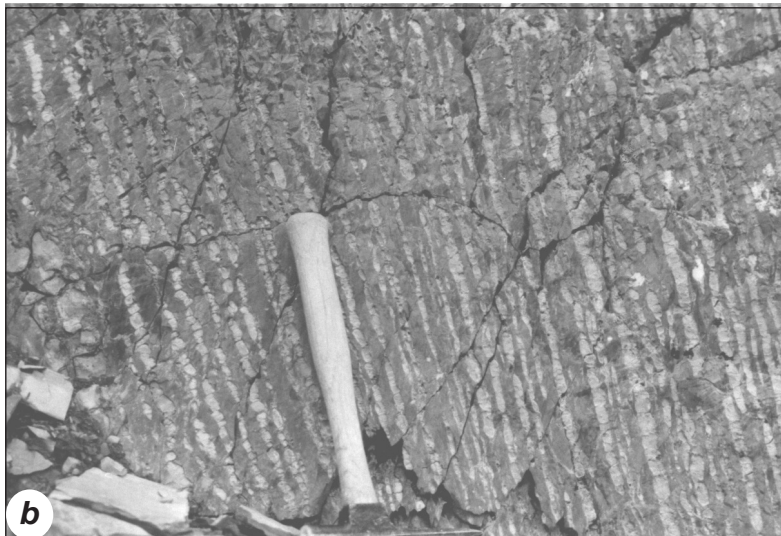


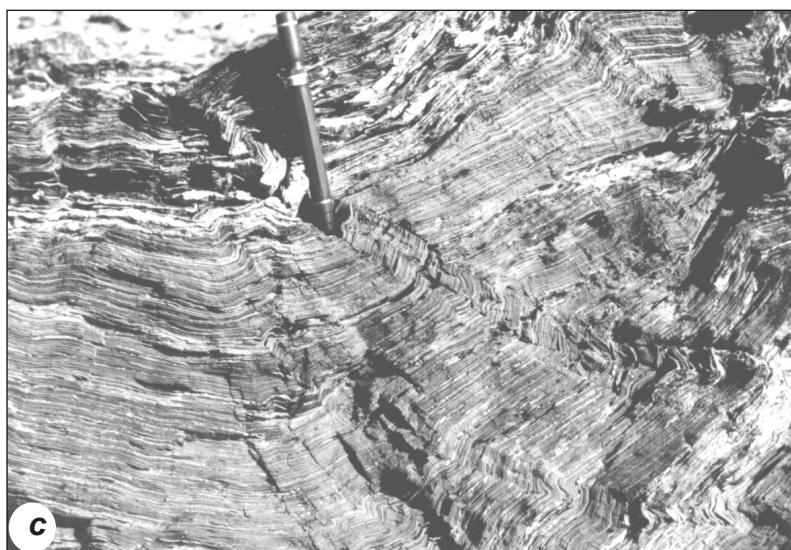
Figure 17 a, b and c: Photographs of the Kechika Group.



a. Interbedded platy limestone and silty limestone characterize the Ram formation. The limestone is a blue-grey micrite and the buff silty argillaceous limestone weathers yellow. This outcrop is southwest of St. Cyr fault near fossil locality 41.



b. Nodular limy argillite is common in the Ram formation north of Tintina stock. The thicker continuous layers are brown calcareous shale and the nodular layers are grey argillaceous micrite.



c. Thinly laminated limy siltstone and dark grey slate of the Ram formation about 12 km southeast of the Lapie River. The silty laminae weather yellow and the slate is brown-grey. Such slate-siltstone is uncommon in the Groundhog formation. The pen is about 15 cm long.