

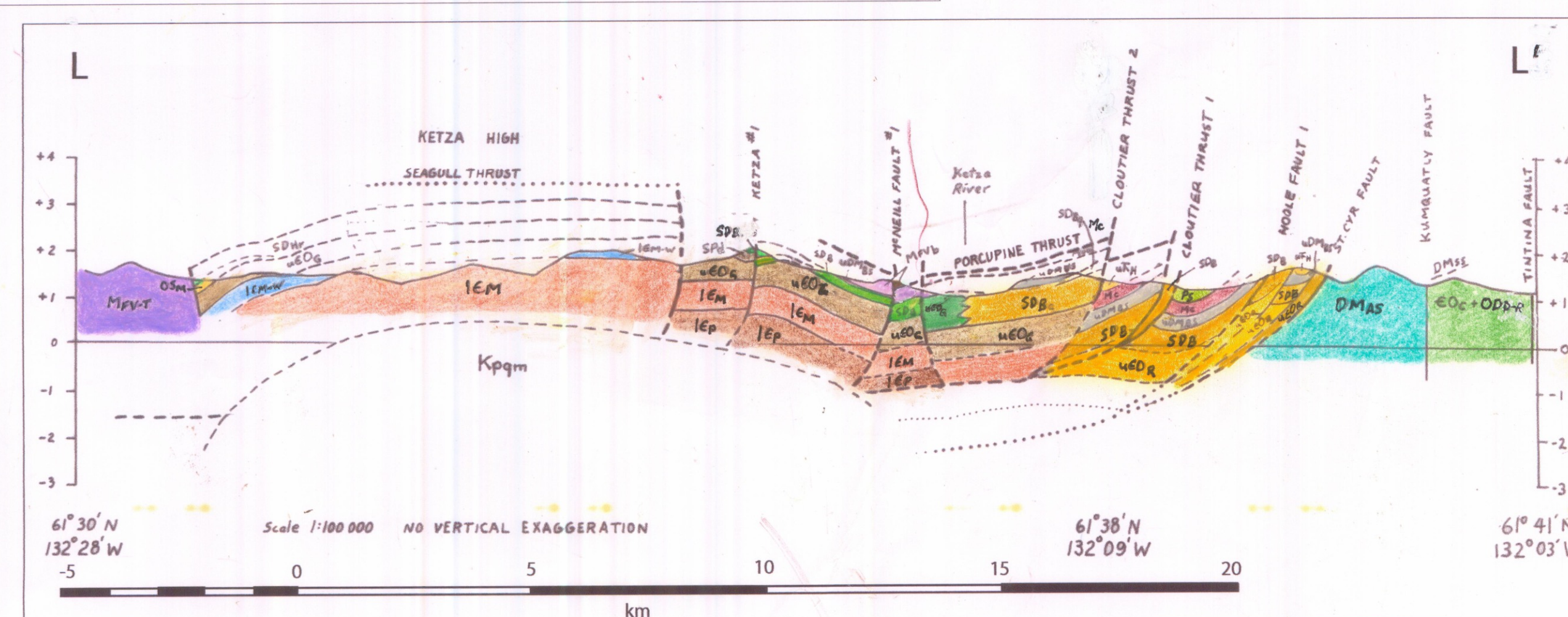
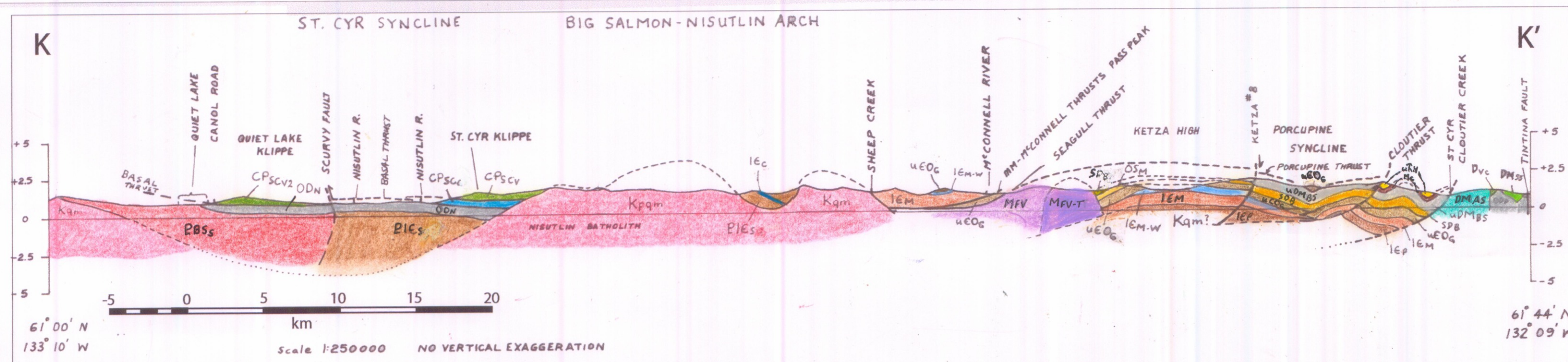
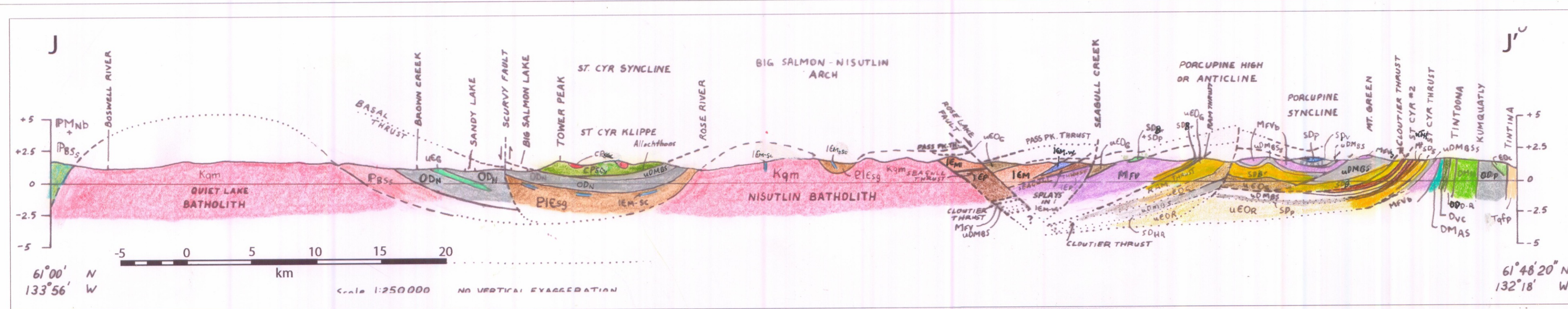
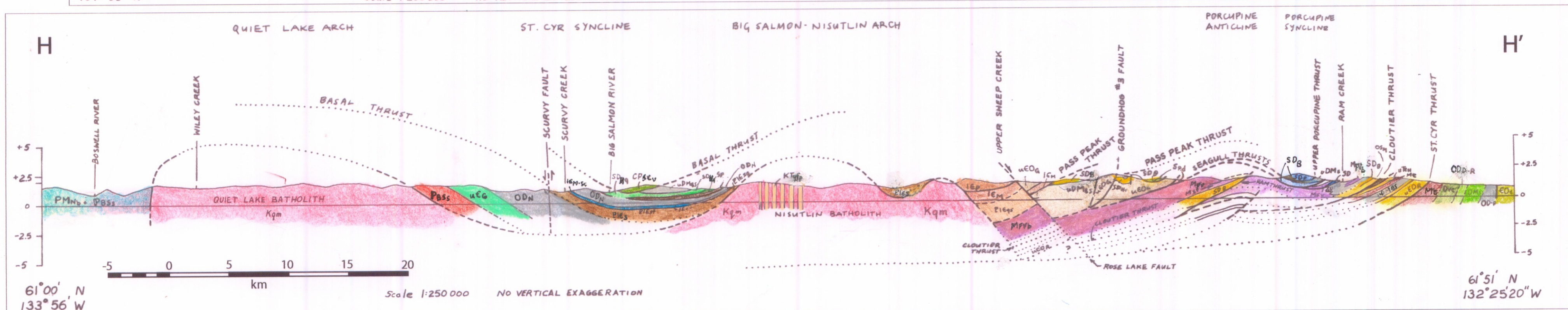
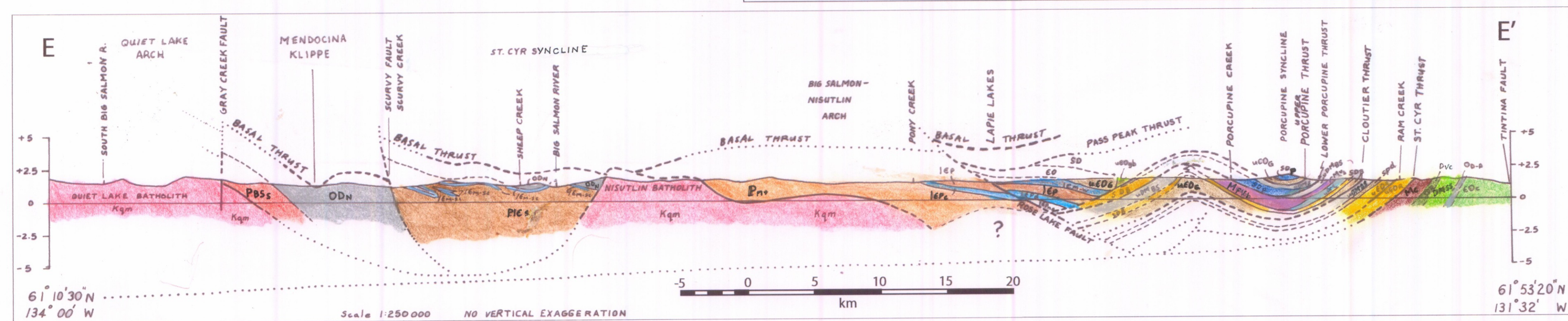
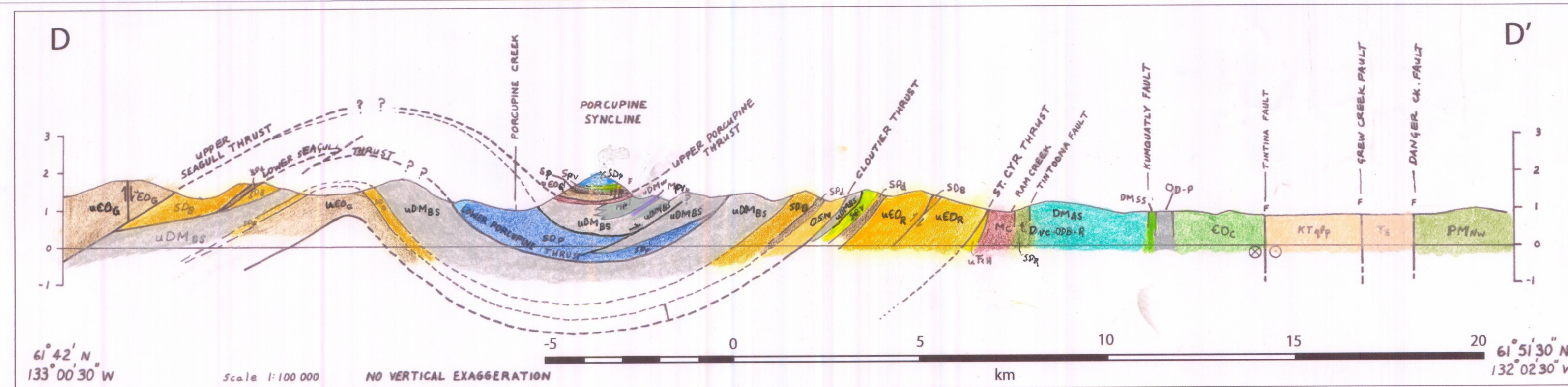
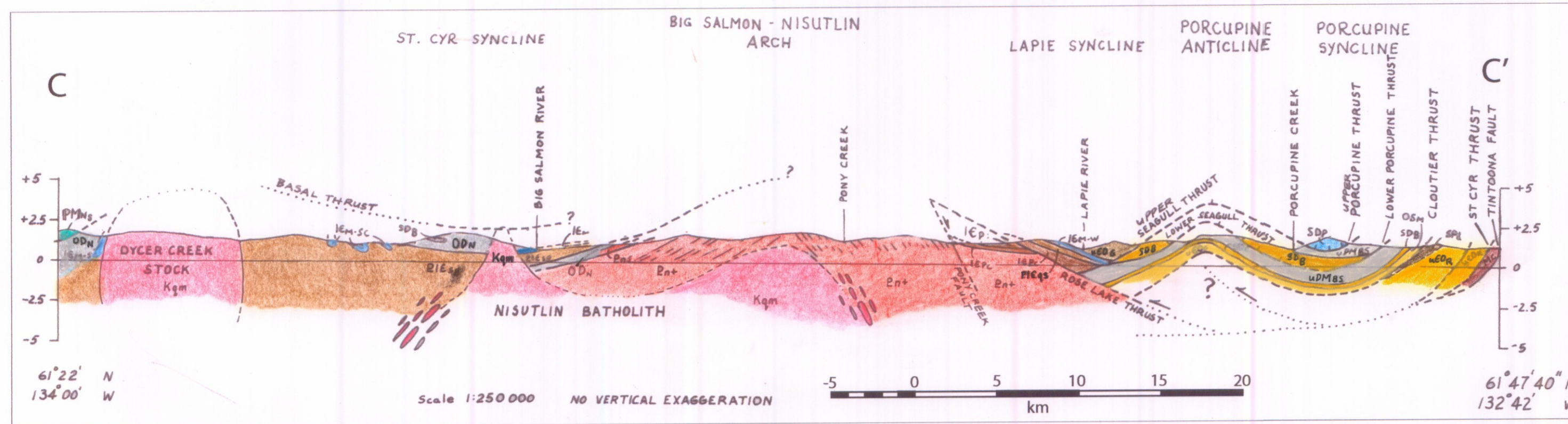
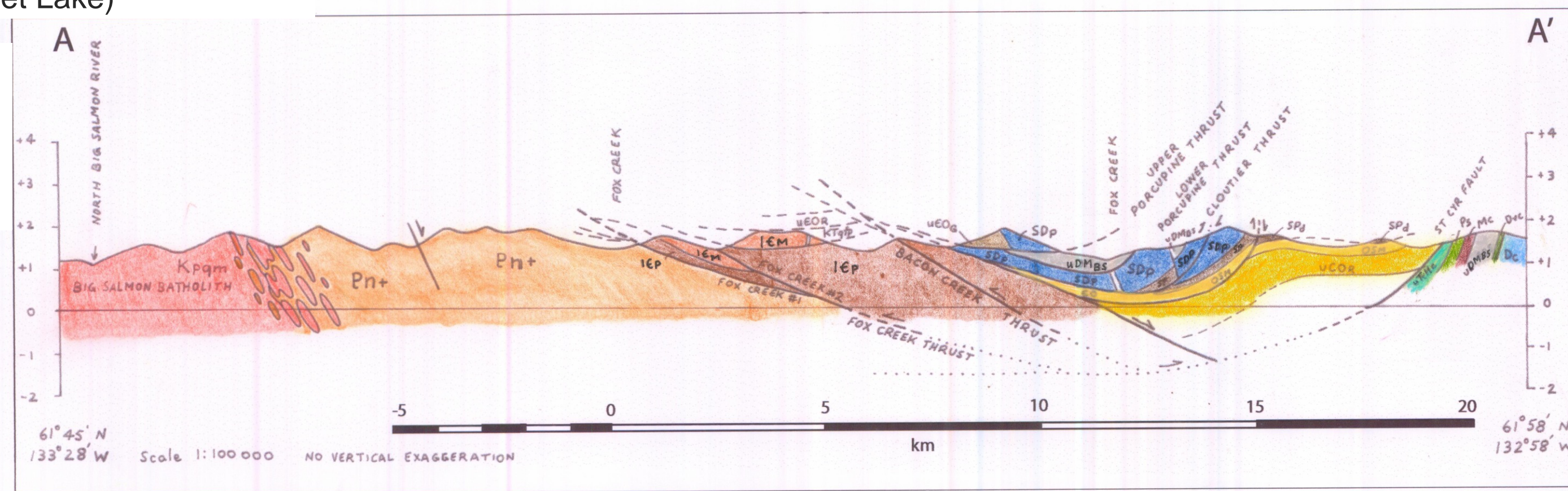


Sheet 9 of 13: CROSS-SECTIONS - 1. Southwest of Tintina trench (Quiet Lake to Ross River area)

- locations of sections are shown on Sheet 1 (Geology, Quiet Lake)
- see Sheet 3 (Legend) for unit labels
- coloured version of author's hand-drawn copy

SOUTHWEST

NORTHEAST



Notes:

Sections at 1:100,000 scale (A, D and L) contain some structures shown only on 1:500,000 scale maps (Sheets 4-7). Sections B, F, G and I are not shown. They were not completed by the author.

These sections contain some transpression faults (with some motion not in the plane-of-section).

Some depicted structures, although geometrically unlikely, are included to illustrate interpretations in the accompanying report (Tempelman-Kluit, 2012; Structural Geology chapter).

OPEN FILE DOSSIER PUBLIC 5487
GEOLOGICAL SURVEY OF CANADA
COMMISSION GÉOLOGIQUE DU CANADA
2012
SHEET 9 OF 13
FEUILLE 9 DE 13

Sheet 9 of 13: Cross-sections 1. Southwest of Tintina trench (Quiet Lake to Ross River area)

Recommended citation
Tempelman-Kluit, D.J., 2012. Geology of Quiet Lake and Finlayson Lake map areas, south-central Yukon - An early interpretation of bedrock stratigraphy and structure; Geological Survey of Canada, Open File 5487. doi:10.4095/291931