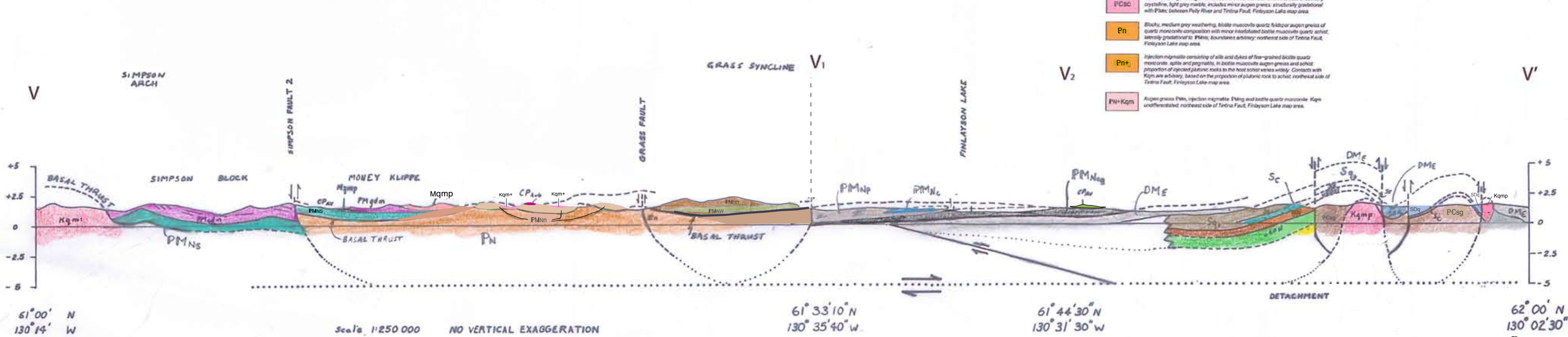
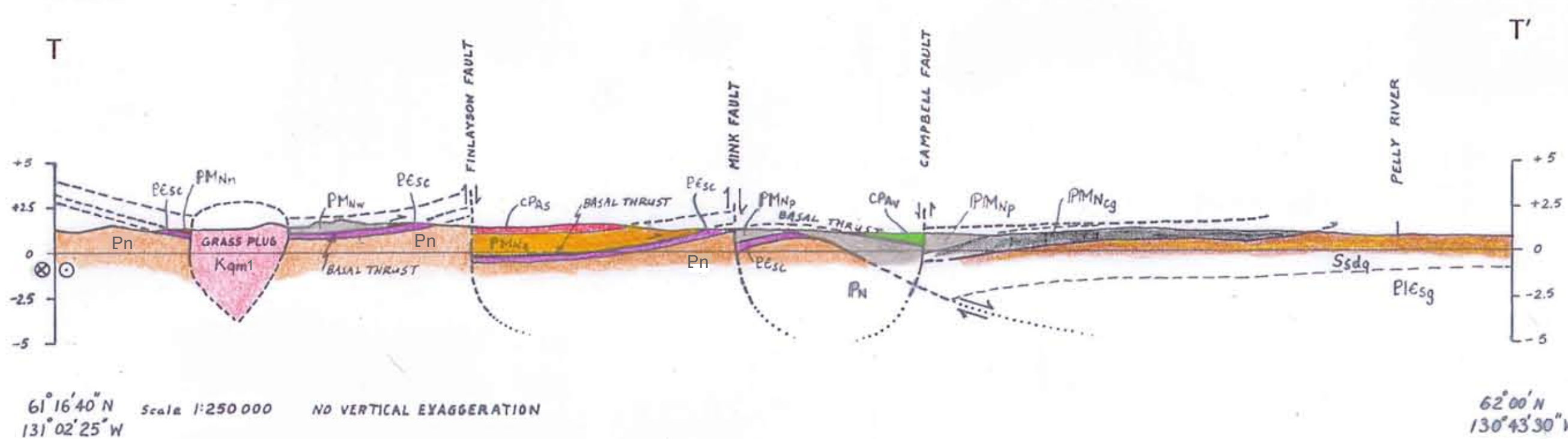
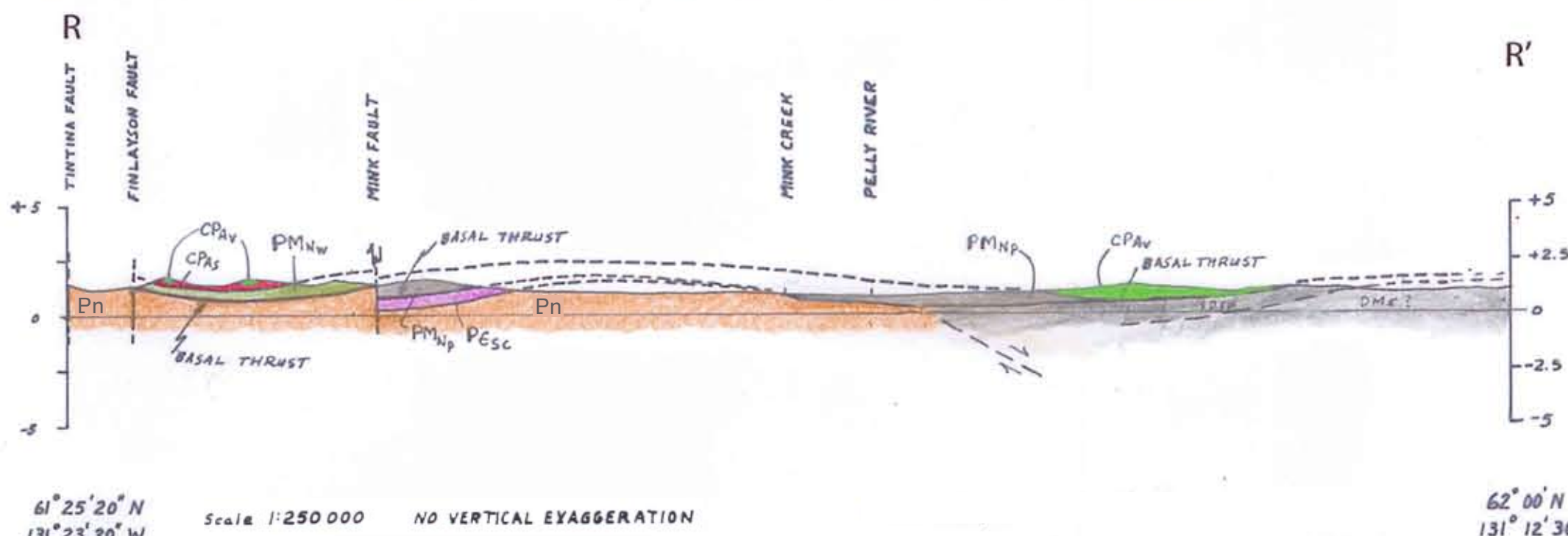
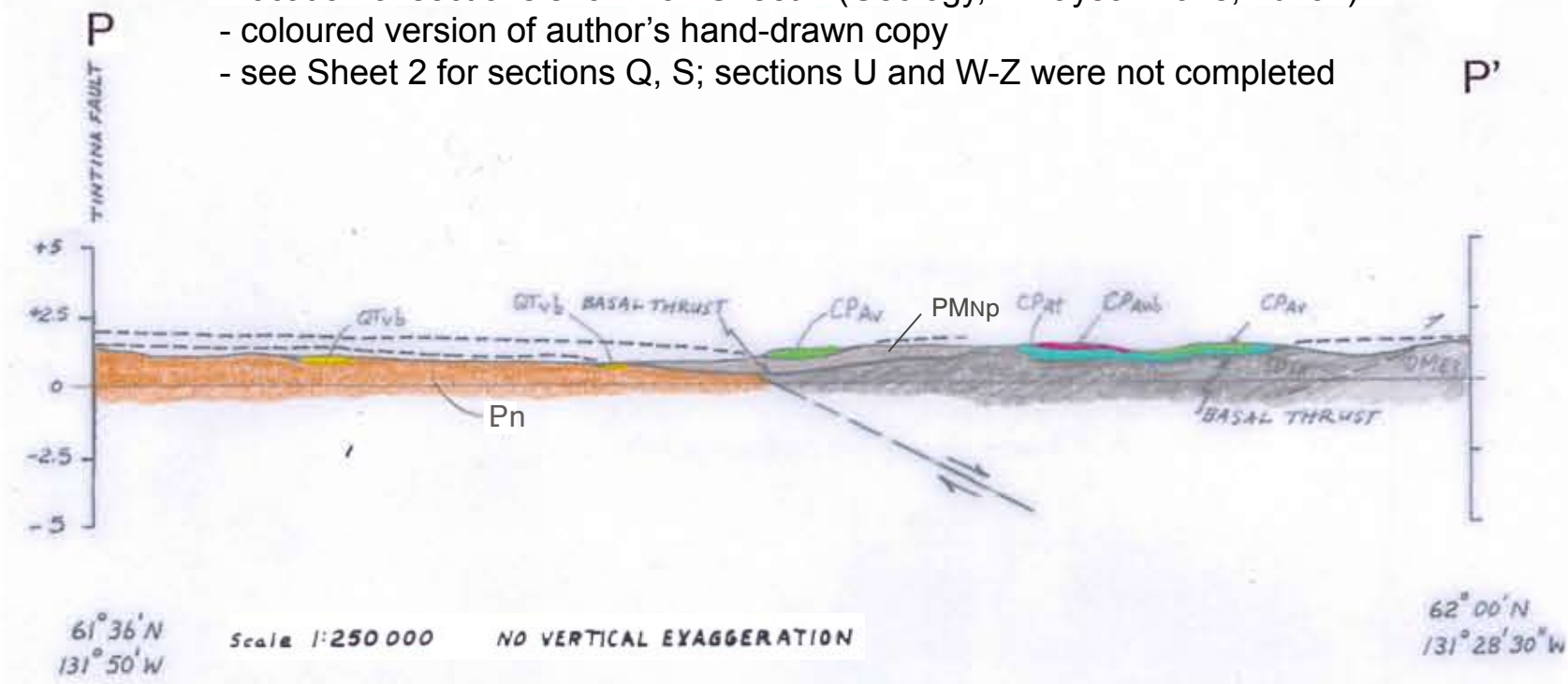




# Sheet 11 of 13: CROSS-SECTIONS - 3. Northeast of Tintina trench

- location of sections shown on Sheet 2 (Geology, Finlayson Lake, Yukon)  
- coloured version of author's hand-drawn copy  
- see Sheet 2 for sections Q, S; sections U and W-Z were not completed



**NORTHEAST OF TINTINA FAULT**

**YOUNGER THAN ALLOCHTHON EMPLACEMENT**

**QTvb** Reverse, brown weathering, fresh brown basalt and basal breccia; Keesee Creek and Campbell Creek, Finlayson Lake map area.

**QTvob** Columnar jointed, brown weathering fresh olive basalt, lower Halls River and West Lake, Finlayson Lake map area.

**TERTIARY**

**Ts** ROSS RIVER CONGLOMERATE: white weathering, poorly indurated sandstone, conglomerate and shale, shale is brown and thin-bedded with abundant cony partings and plant debris; sandstone is coarse-grained, poorly sorted shales with beds to a metre thick, conglomerate in beds to 20 metres thick, includes pebbles and cobbles of quartz, quartzite, green basalt and red cherty tuff in a sandy matrix of quartz, calcite and muscovite; in Tintina Trench southeast of Ross River community.

**INTRUSIVE ROCKS**

**CRETACEOUS AND TERTIARY**

**LANE RIVER PORPHYRY:** Fresh, rusty weathering, light grey phyllite with chert quartz and white siliceous phenocrysts (locally pyritic), subvolcanic equivalent of South Fork Volcanics, locally northeast of Tintina Fault.

**Ktqp** Blocky, resistant, medium grey weathering, fine-grained basaltic medium-grained with grey, amorphous quartz and white siliceous in a finely crystalline quartz-feldspathic groundmass; includes McEvoy Block, northeastern Finlayson Lake map area.

**Kqmp** Resistant, blocky weathering, mostly epigranular medium-grained, but locally porphyritic (white K-feldspar), homogeneous grey basaltic quartz monzonite and lesser granodiorite; contacts with Pn are arbitrary and based on the proportion of plagioclase rock to the schist; northeast Finlayson Lake map area.

**ALLOCHTHONOUS ROCKS**

**SIMPSON ALLOCHTHON**

**Kqm1** Blocky quartz monzonite with numerous zones and pockets of schist and gneiss; mainly Pn; contacts are arbitrary; southeast Finlayson Lake map area.

**Mog** orthogneiss.

**Mqgp** Resistant, medium grey weathering, prognostic pink K-feldspar blocky quartz monzonite; generally fresh to weakly unroofed; locally unroofed and reworked, but lacking the calcareous texture of PMNcg; includes PMNcg unroofed northeast of Pelly Lake, Finlayson Lake map area.

**PMNcg** Massive, resistant, medium grey weathering, blocky dark green, strongly unroofed quartz orthogneiss; locally unroofed and reworked; locally preserved original texture and minerals; the rock was equigranular medium-grained; hornblende granodiorite to quartz diorite with subvolcanic textures; locally phylloporphyritic and block quartz gneiss; orthogneiss with K-feldspar crystals to 5 cm across are grown in and across the calcareous fabric; may include qmp unroofed; southeast Finlayson Lake map area.

**Mqgn1** Light rusty weathering, yellow greenish phyllite and siliceous beds derived from hornblende quartz diorite; associated with PMNcg are arbitrary; locally in PMNcg.

**CARBONIFEROUS AND PERMIAN ANVIL ALLOCHTHON**

**CPAs** Resistant, dark grey weathering, massive, dark green basaltic gneiss and amphibolite; minor scaly porphyry; includes CPAs and CPAs unroofed northeast of Pelly River area in the west equivalent of Anvil Range Group basalt; northeastern half of Finlayson Lake map area.

**CPAs** Resistant, purple-red and apple-green chert and cherty tuff; includes CPAs unroofed equivalent of chert in Anvil Range Group, northeast of Pelly River, Finlayson Lake map area.

**CPAs** Dark grey weathering, resistant, massive medium-grained gneiss; includes CPAs and CPAs unroofed; locally in central Finlayson Lake map area.

**CPAs** Resistant, dark brown weathering, dark, peridotite and pyroxenite and serpentinitized equivalents; includes CPAs and CPAs unroofed; locally within CPAs.

**CPAs** Yellow green weathering, serpentinitized peridotite and pyroxenite; includes CPAs and CPAs; locally within CPAs in northeastern Finlayson Lake map area.

**CPAs** Resistant, orange weathering, white, suppy quartz carbonate rock with minor green chromian mica; includes CPAs associated with CPAs.

**TINTINA FAULT**

**PROTEROZOIC TO PALEOZOIC**

**MIDDLE ALLOCHTHON**

**CARBONIFEROUS OR PERMIAN**

**CPAs** White weathering, resistant, massive light grey crystalline coarse-grained; commonly has well-developed fabric and gneiss in a well-developed basal fabric; includes minor Pn unroofed; local areas near Finlayson Lake.

**FALEOZOIC AND MESOZOIC**

**PEsc** Resistant, medium grey, chert and quartz-pebble conglomerate with white interbedded black shale; mostly the rocks have a well-developed basal fabric; so that they grade into Pn; southeast Finlayson Lake.

**PMNs** Slightly rusty weathering, white to pale green, massive quartz; locally blocky; includes minor fine-grained amphibolite and chert quartz and basaltic quartz; Finlayson Lake map area.

**PMhp** Pink green muscovite chlorite quartz phyllite and medium green amphibole chlorite phyllite; includes minor black matrix; generally strongly sheared with a well-developed, slightly recrystallized calcareous fabric; central Finlayson Lake map area.

**PMhw** Black siliceous phyllite and medium green amphibole chlorite phyllite; locally includes much interbedded grey and purple greywacke containing clasts of lake quartz, white K-feldspar and siliceous; locally includes thin black matrix lenses and interbedded; for the most part the rocks are strongly sheared; central Finlayson Lake map area.

**PMhc** Resistant weathering, white quartzite with minor granitic gneiss; west of Whitehorse Lake, Finlayson Lake map area.

**PMhs** Fairly resistant medium grey weathering, muscovite biotite quartz-feldspathic gneiss with interbedded coarse blocky quartzite; quartz orthogneiss; amphibolite; orthogneiss and minor white marble; gradational with, and the melanomphic equivalent of Pn; and PMhp near Tintina Fault; Pn and PMhs are gradational with each other; central Finlayson Lake map area.

**EMPLACED IN JURA-CRETACEOUS**

**AUTOCHTHONOUS ROCKS (ANCIENT NORTH AMERICA)**

**MESOSOPHIAN**

**MTy** Rusty orange weathering, pale green cherty stained volcanic rocks of intermediate composition with less greenish chert; minor black shale; massive medium green intermediate fault; southeast of Finlayson Lake.

**MIDDLE DEVONIAN TO MESOSOPHIAN**

**DME** Black, massive weathering, with rusty streaks, thin-bedded black siliceous slate with minor interbedded chert grey quartzite and chert granule gneiss; near McEvoy Lake, Finlayson Lake map area.

**SDsp** Resistant, dark grey to black weathering, thin-bedded and shaly calcareous and siliceous granitic schists with minor black siliceous slate; gradational with and contains lenses of Sdq and SDq unroofed; near McEvoy Lake, Finlayson Lake map area.

**SDq** Interbedded white weathering, resistant, medium-bedded, light grey, siliceous and sparry dolomite, orthoquartzite and sandy dolomite; northeast of McEvoy Lake, Finlayson Lake map area.

**Sq** Silvery white weathering, resistant, medium-bedded, medium-grained massive orthoquartzite commonly with siliceous content; minor interbedded sandy dolomite; northeast of McEvoy Lake, Finlayson Lake map area.

**SC** Resistant, light grey and white weathering, massive, medium grey, medium-bedded, laminated to massive, dolomite, minor sandy dolomite; northeast of McEvoy Lake, Finlayson Lake map area.

**De** Fine weathering, brownish grey, thin-bedded to platy, dolostone and silty dolomite; northeast of McEvoy Lake, Finlayson Lake map area.

**LOWER CAMBRIAN AND OLDER**

**PCag** Orange brown weathering, massive, medium grey siliceous and silty phyllite with lenses of pale green tuff; minor calcareous phyllite; northeast Finlayson Lake map area.

**PCag** Dark grey weathering, medium green silty shale with some interbedded greywacke made up of white quartz grit in a greenish matrix; northeast Finlayson Lake map area.

**PCag** Rusty weathering, green, white and purple banded hornblende, melanomphic equivalent of PCag around Fort Sida.

**ALLOCHTHONOUS OR PARA-ALLOCHTHONOUS**

**PROTEROZOIC OR CAMBRIAN**

**OMNECA CRYSTALLINE COMPLEX**

**MNc** Blocky weathering, blocky gneiss; massive schist with interbedded lenses of coarsely crystalline, light grey marble; includes minor augen gneiss; structurally gradational with Pn; between Pelly River and Tintina Fault, Finlayson Lake map area.

**Pn** Blocky, medium grey weathering, blocky muscovite quartz feldspar augen gneiss of quartz monzonite composition with minor recrystallized biotite muscovite quartz schist; locally gradational to PMNs; boundaries arbitrary; northeast side of Tintina Fault, Finlayson Lake map area.

**Pn+** Fraction migmatite consisting of siliceous and dikes of fine-grained blocky quartz monzonite, apite and pyroxenite, in biotite muscovite augen gneiss and schist; proportion of calcareous gneiss rocks to the host rock varies widely; contacts with Kqm are arbitrary, based on the proportion of plagioclase rock to schist; northeast side of Tintina Fault, Finlayson Lake map area.

**PM+Kqm** Augen gneiss Pn, igneous migmatite Pn and biotite quartz monzonite Kqm unroofed; northeast side of Tintina Fault, Finlayson Lake map area.

**OPEN FILE DOSSIER PUBLIC**

**5487**

GEOLOGICAL SURVEY OF CANADA  
COMMISSION GÉOLOGIQUE DU CANADA

2012

SHEET 11 OF 13  
FEUILLET 11 DE 13

Publications in this series have not been edited, they are released as submitted by the author.  
Les publications de cette série ne sont pas révisées; elles sont publiées telles que soumises par l'auteur.

Sheet 11 of 13: Cross-sections - 3. Northeast of Tintina trench

Recommended citation:  
Tempelman-Kluit, D.J., 2012. Geology of Quiet Lake and Finlayson Lake map areas, south-central Yukon – An early interpretation of bedrock stratigraphy and structure; Geological Survey of Canada, Open File 5487. doi:10.4095/291931

