



GEOLOGICAL SURVEY OF CANADA
DEPARTMENT OF ENERGY, MINES AND RESOURCES

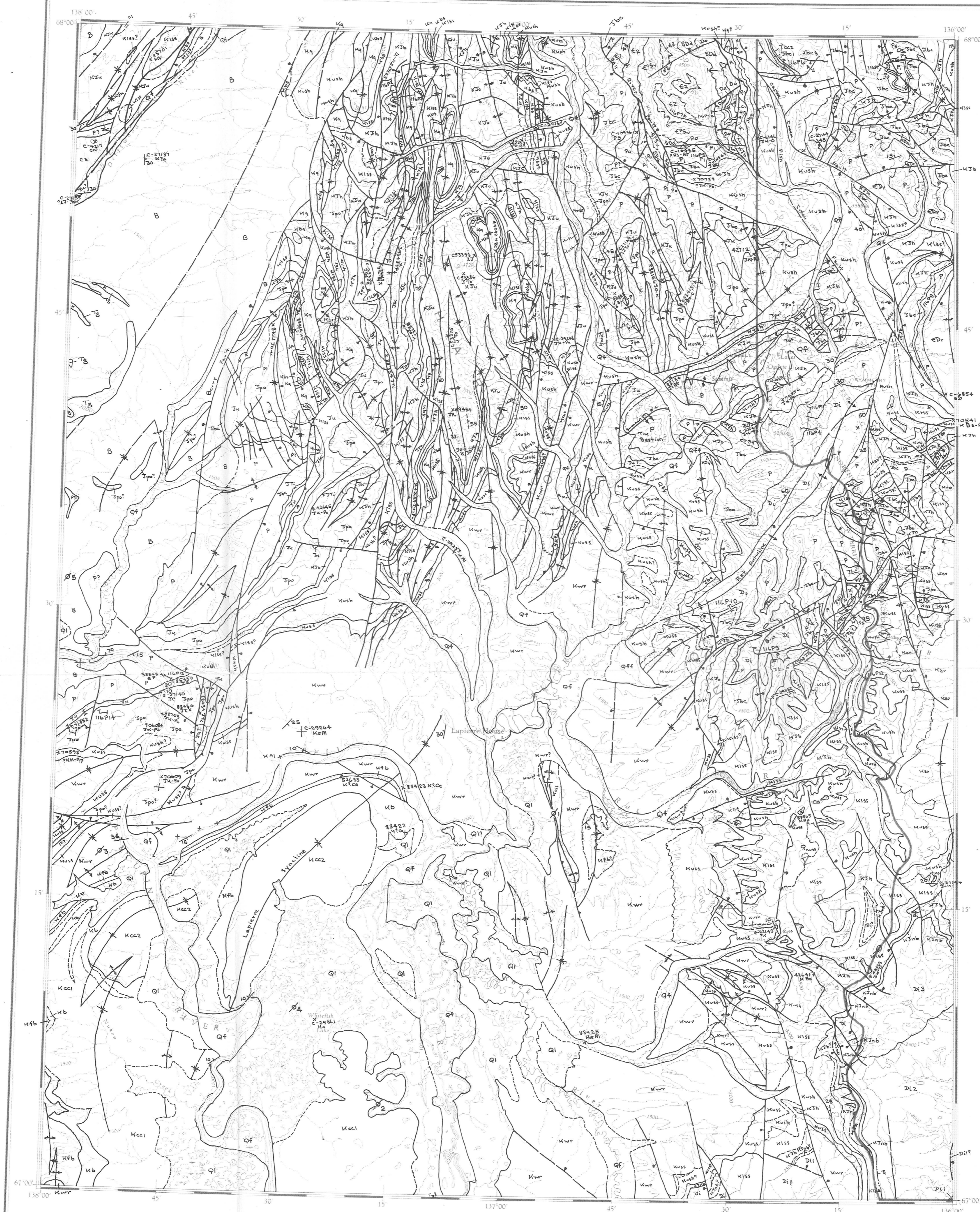
NATIONAL TOPOGRAPHIC SYSTEM

1:250,000

CANADA

FIRST EDITION

SHEET 116 P



This document was produced by scanning the original publication.
Ce document est le produit d'une numérisation par balayage de la publication originale.

THE DELINEATION OF THE COMPASS NEEDLE 1947

Produced and printed by the SURVEYS AND MAPPING BRANCH, DEPARTMENT OF MINES AND TECHNICAL SURVEYS, 1953. From air photographs taken in 1951 and 1954.

Universal Transverse Mercator Projection

Contour interval 500 Feet
Elevations in Feet above Mean Sea Level
North American Datum 1927

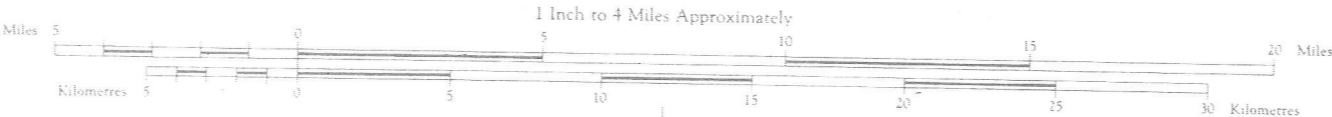
Clips may be obtained from the Map Distribution Office, Department of Mines and Technical Surveys, Ottawa, at 25 cents each.

D. K. Norris/75

BELL RIVER

YUKON TERRITORY - NORTHWEST TERRITORIES

Scale 1:250,000
1 Inch to 4 Miles Approximately

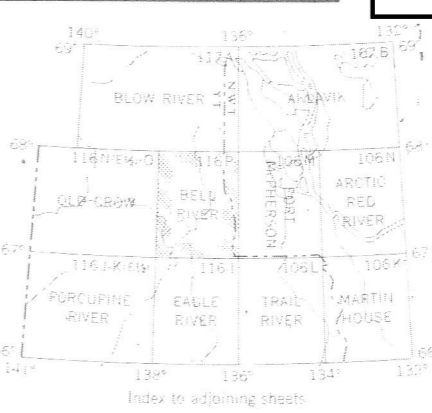


REFERENCE

- Wagon or winter road
- Trail or portage
- Boundary: provincial
- Village or settlement
- Post office
- Building or cabin
- R.C.M.P. post
- Horizontal control point
- Astronomical position
- Spot elevation (in feet)

REFERENCE

- Streams: intermittent or dry
- Intermittent lake
- Rapids, falls
- Sand, gravel or mud
- Marsh or swamp
- Contours: elevation
- depression
- approximate
- Forest



OPEN FILE
DOSSIER PUBLIC
621
1979
GEOLOGICAL SURVEY
COMMISSION GÉOLOGIQUE
OTTAWA
BELL RIVER
116P