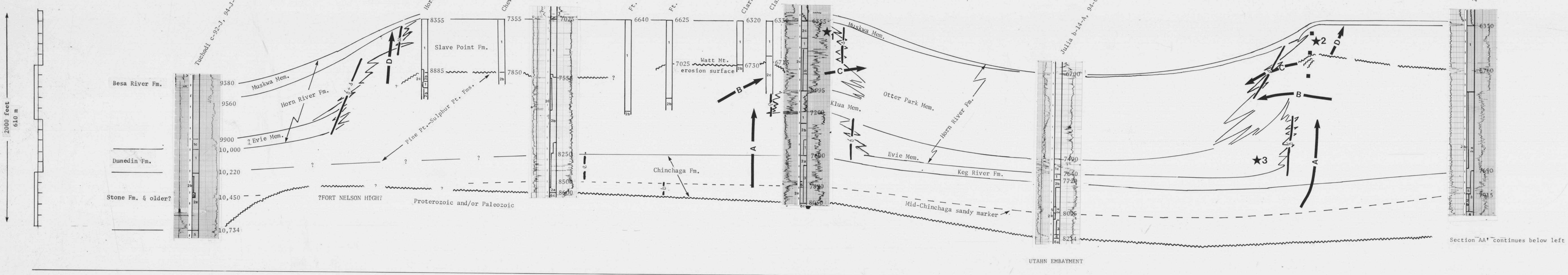


A
Southwest

Datum: west of C-40-B datum is the top of the Slave Point Fm., the positions of C-32-7 and b-14-A are estimates.



LEGEND

Generalized Lithology

- Limestone: 1a light colored, interpreted to be of shallow water origin, includes reef, sands and muds; 1b darker, interpreted to be carbonate detritus deposited in moderately deep water; 1c dark bituminous limestone - shale, interpreted to be of relatively deep water origin.
- Dolomite: 2a dense to micro crystalline, 2b fine to medium crystalline; 2c coarse crystalline (Presqu'ile-type).
- Anhydrite
- Redbeds: a mixture of dolomite, anhydrite, silt, clay
- Sandstone
- Basement: 6a igneous and metamorphic rocks of Precambrian shield; 6b Upper Proterozoic slightly metamorphosed sediments; 6c quartzite or sandstone, Paleozoic and/or Precambrian.

(shale, interbedded with or mixed with the above can be read from the mechanical logs)

- Subaerial erosion
- Non-deposition or submarine erosion
- Presqu'ile dolomite (type 2c) occurs at the indicated horizon in nearby wells

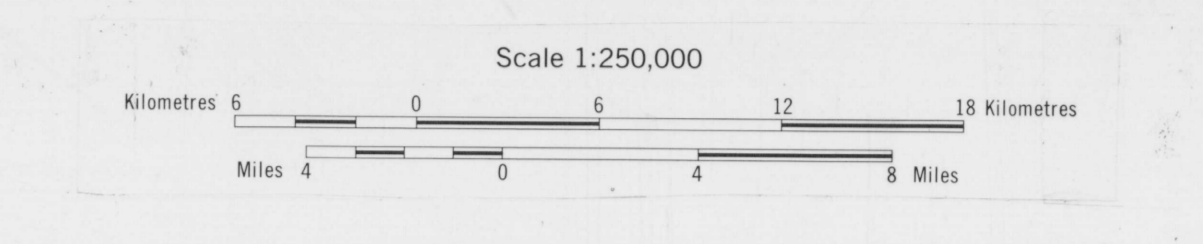
Facies lines (see maps)

- Western and eastern limits of a belt that is transitional from normal-marine carbonates of the Arctic or Stone Fm. west of line to restricted evaporite deposits of the Bear Rock or Lower Chinchaga Fm. east of line
- Western limit of Upper Chinchaga anhydrite
- Seward (generally northward or westward) limit of the Keg River barrier during the earliest stages of its growth
- Northwestern limit of Muskeg anhydrite
- Limit (generally northern or western) of Watt Mountain karsting where this limit is not coincident with the Slave Point edge
- Southern limit of Klus shale
- Seward limit of Slave Point Fm.
- Limit of Waterways Fm. or equivalent shale

MIDDLE DEVONIAN CARBONATE BARRIER-COMPLEX OF WESTERN CANADA

CROSS-SECTIONS AA' AND BB'

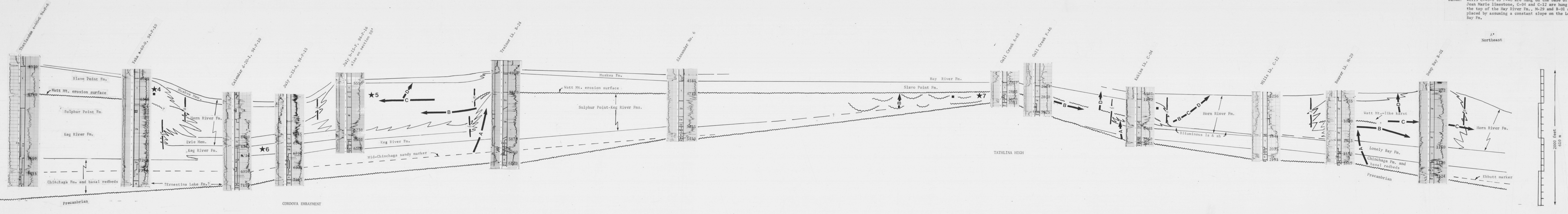
Compiled by G.K. Williams, ISPG, Calgary, 1981



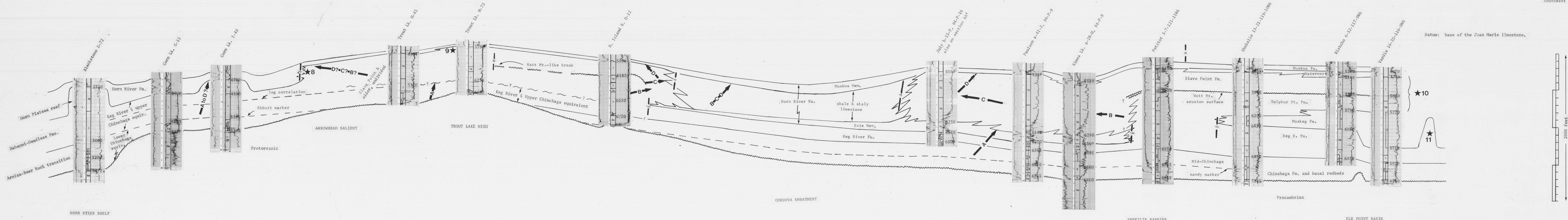
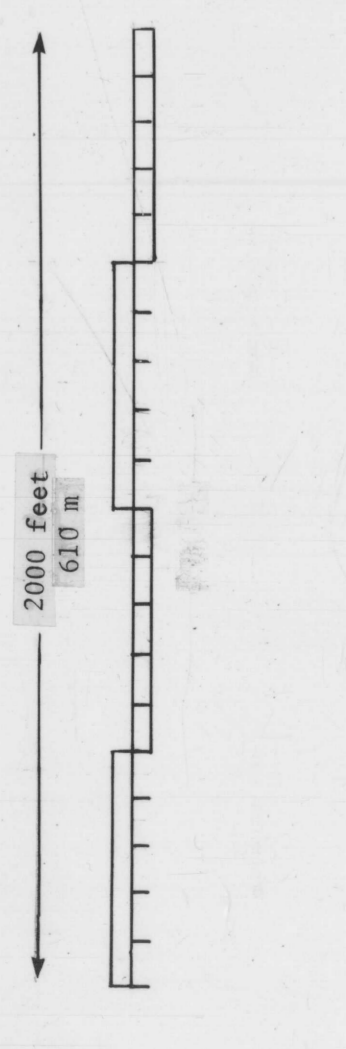
- Main subsidence - eustatic events
- Early, rapid part of Keg River transgression
 - Late, slow part of Keg River transgression
 - Marine sediments deposited during the Watt Mountain regression
 - Early part of Swan Hills transgression (arrows slope in the direction of facies migration)
- Petroleum traps
- ★4 Approximate stratigraphic position of fields
- 1 Clarke Lake, gas
 - 2 Katcho - Belton trend, gas
 - 3 Yoyo, Koml, gas in reefs or mounds
 - 4 Helmet, Moss, S. Island river, gas
 - 5 Pogo, Trainor Lake C-39, gas
 - 6 N. Helmet, gas
 - 7 Rabbit Lake, gas
 - 8 Betla (C-07), gas
 - 9 Cellibeta, gas
 - 10 numerous Alberta fields, gas, oil
 - 11 Rainbow and Zama, oil, gas

OPEN FILE
DOSSIER PUBLIC
761
GEOLOGICAL SURVEY
COMMISSION GEOLOGIQUE
OTTAWA

Datum: wells C-40-C to F-46 are hung on the base of the Jean Marie Limestone, C-04 and C-12 are hung on the top of the Lay River Fm., W-29 and B-01 are placed by assuming a constant slope on the Lonely Bay Fm.



B
Northwest



B
Southeast

