

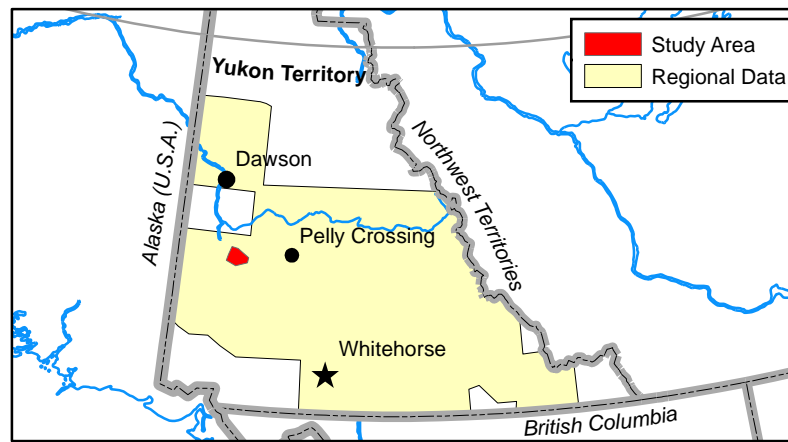
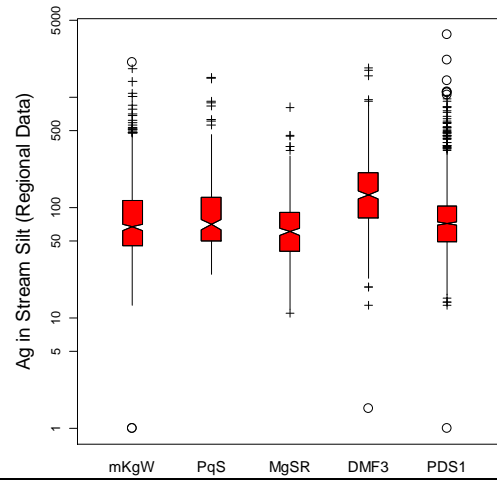
Ag in Stream Silt Aqua regia/ICP-MS <0.177 mm fraction

Graduated (range-graded)
Symbol

Abbreviated
Sample Number
(115J171014)

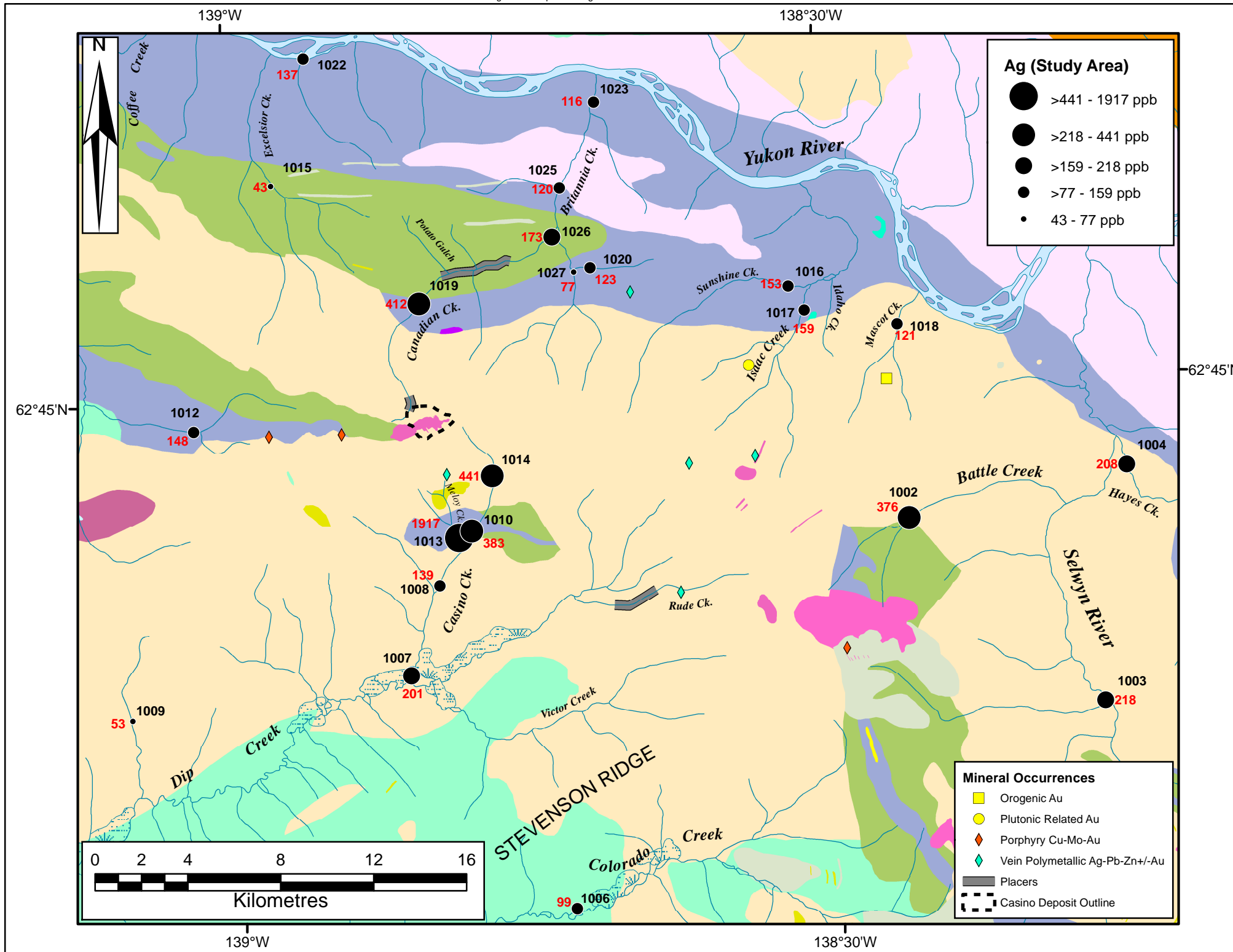
Element Concentration
at Site

441 ● 1014



Ag*	All n=19471	mKqW n=571	PqS n=125	MgSR n=230	DMF3 n=576	PDS1 n=1210
Maximum Value	54066	2082	1512	812	1841	3697
98th Percentile	1153	550	909	341	650	497
95th Percentile	729	336	598	243	441	285
90th Percentile	482	225	291	179	311	185
3rd Quartile (75th)	236	115	124	90	208	104
Median (50th)	108	67	71	61	130	72
1st Quartile (25th)	61	45	50	40	80	49
10th Percentile	40	33	38	26	57	35
5th Percentile	32	29	33	19	45	28
2nd Percentile	24	23	29	16	32	23
Minimum Value	<2	<2	25	11	13	<2
Median	108	67	71	61	130	72
MAD**	89	43	36	36	89	39
Arithmetic Mean	220	115	142	84	175	107
Standard Deviation	642	172	235	86	175	171

* Regional Data **Median Absolute Deviation



PALEOCENE TO LOWER EOCENE

- PRC1: RHYOLITE CREEK: light grey, green, maroon, purple and black rhyolite and dacite
- PRC2: RHYOLITE CREEK: maroon to reddish purple, fine to very coarse grained andesite

LATE CRETACEOUS TO TERTIARY

- LKyP: PROSPECTOR MOUNTAIN SUITE: syenite
- LKfC: CASINO SUITE: quartz-feldspar porphyry

MID-CRETACEOUS

- mKqW: WHITEHORSE SUITE: Bt-Hbl granodiorite, Hbl quartz diorite and Hbl diorite
- mKqW: WHITEHORSE SUITE: Bt quartz monzonite, Bt granite and leucogranite
- mKN: MOUNT NANSEN: massive aphyric or feldspar-phyric andesite to dacite flows

UPPER CRETACEOUS

- uKC1: CARMACKS: augite-olivine basalt and breccia
- uKC2: CARMACKS: andesite, porphyry
- uKC4: CARMACKS: sandstone, pebble conglomerate, shale, tuff, and coal

LATE TRIASSIC TO EARLY JURASSIC

- LTrEJgM: MINTO SUITE: foliated Bt-Hbl granodiorite; Bt-rich screens and gneissic schlieren

LATE TRIASSIC

- LTrgS: STIKINE SUITE: coarse-grained, foliated, gabbroic Hbl orthogneiss

MIDDLE TO LATE PERMIAN

- PqS: SULPHUR CREEK SUITE: variably foliated, K-feldspar augen granite, metaporphry
- PK1: KLONDIKE SCHIST: quartz-muscovite-chlorite schist

MISSISSIPPIAN

- MgSR: SIMPSON RANGE SUITE: Hbl-bearing metagranodiorite, metadiorite and metatonalite

DEVONIAN, MISSISSIPPIAN AND(?) OLDER

- DMF1: FINLAYSON: intermediate to mafic volcanic and volcanoclastic rocks
- DMF3: FINLAYSON: dark grey to black carbonaceous metasedimentary rocks, metachert
- DMF6: FINLAYSON: ultramafic rocks, serpentinite; metagabbro

LATE DEVONIAN TO MISSISSIPPIAN

- LDgMB: MT BAKER SUITE: strongly foliated to gneissic granodiorite, diorite and monzogranite
- LDyMB: MT BAKER SUITE: strongly foliated to gneissic diorite, gabbro and minor pyroxenite

ORDOVICIAN TO LOWER DEVONIAN

- ODS: SCOTTIE CREEK: quartzite, micaceous quartzite, psammitic Qtz-Ms-Bt ± Grt schist

NEOPROTEROZOIC AND PALEOZOIC

- PDS1: SNOWCAP: quartzite, psammite, pelite and marble; minor greenstone and amphibolite
- PDS2: SNOWCAP: light grey to buff weathering marble

Mineral Occurrences

- Orogenic Au
- Plutonic Related Au
- Porphyry Cu-Mo-Au
- Vein Polymetallic Ag-Pb-Zn+/-Au
- Placers
- Casino Deposit Outline