

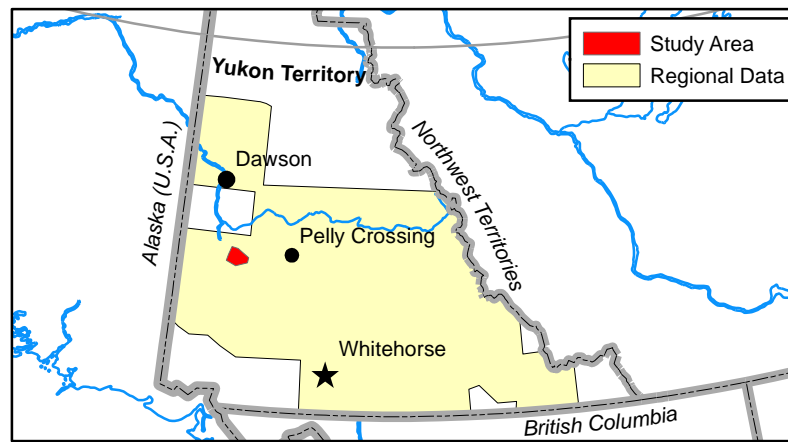
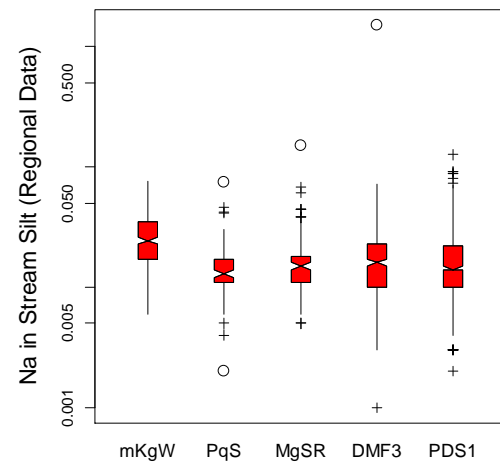
Na in Stream Silt Aqua regia/ICP-MS <0.177 mm Fraction

Graduated (range-graded)
Symbol

Abbreviated
Sample Number
(115J171014)

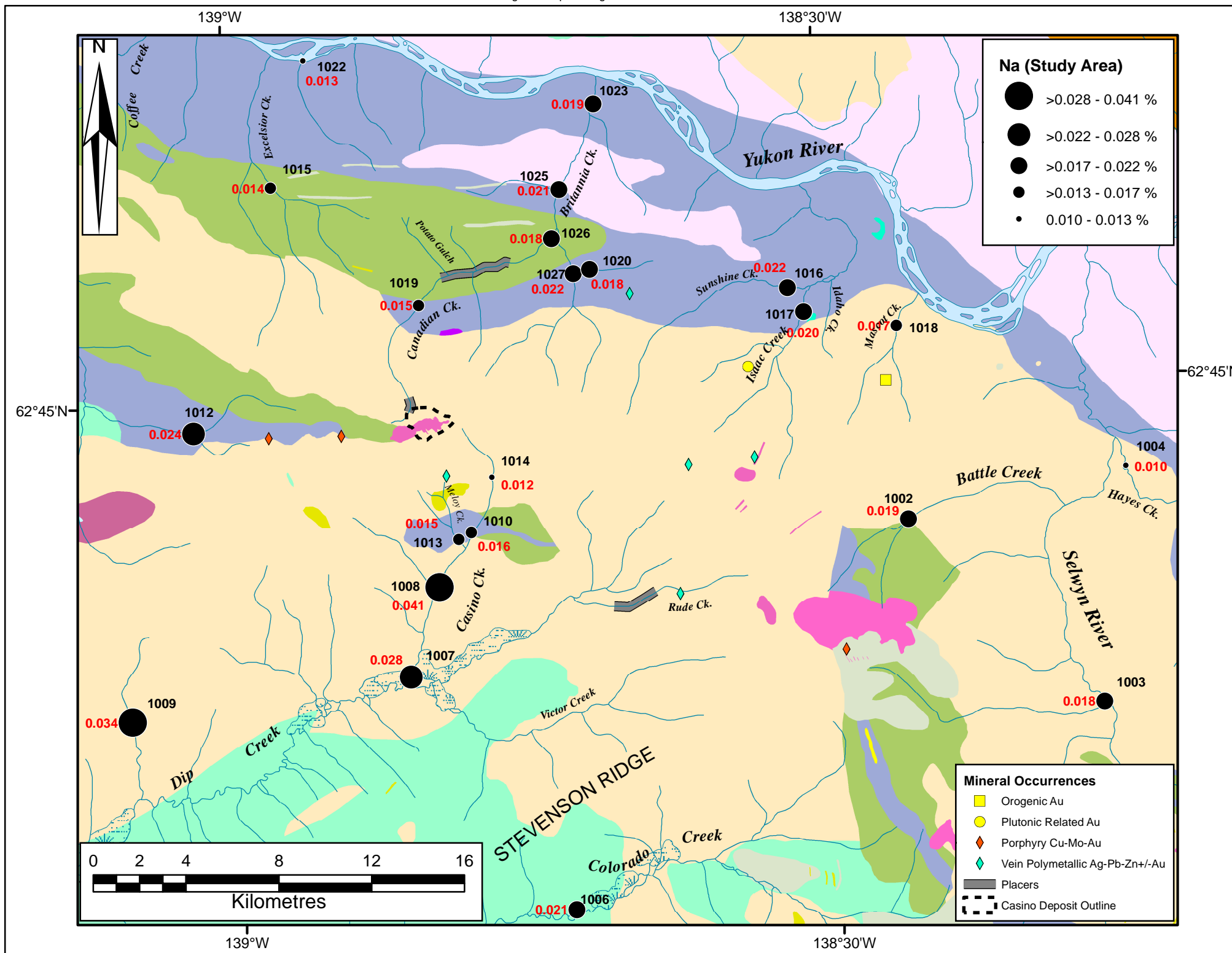
Element Concentration
at Site

1014
0.012



Na*	All n=19471	mKgW n=571	PqS n=125	MgSR n=230	DMF3 n=576	PDS1 n=1210
Maximum Value	1.379	0.076	0.075	0.151	0.072	0.126
98th Percentile	0.059	0.053	0.042	0.044	0.043	0.051
95th Percentile	0.043	0.047	0.027	0.033	0.037	0.039
90th Percentile	0.034	0.042	0.021	0.024	0.032	0.031
3rd Quartile (75th)	0.021	0.035	0.017	0.018	0.023	0.022
Median (50th)	0.013	0.024	0.013	0.015	0.016	0.014
1st Quartile (25th)	0.008	0.017	0.011	0.011	0.010	0.010
10th Percentile	0.005	0.013	0.008	0.008	0.006	0.006
5th Percentile	0.004	0.011	0.007	0.008	0.005	0.005
2nd Percentile	0.003	0.009	0.005	0.006	0.004	0.004
Minimum Value	<0.001	0.006	0.002	0.005	0.001	0.002
Median	0.013	0.024	0.013	0.015	0.016	0.014
MAD*	0.009	0.013	0.004	0.006	0.010	0.009
Arithmetic Mean	0.017	0.026	0.015	0.017	0.018	0.017
Standard Deviation	0.019	0.012	0.009	0.012	0.011	0.012

* Regional Data **Median Absolute Deviation



PALEOCENE TO LOWER EOCENE

- PRC1: RHYOLITE CREEK: light grey, green, maroon, purple and black rhyolite and dacite
- PRC2: RHYOLITE CREEK: maroon to reddish purple, fine to very coarse grained andesite

LATE CRETACEOUS TO TERTIARY

- LKyP: PROSPECTOR MOUNTAIN SUITE: syenite
- LKfC: CASINO SUITE: quartz-feldspar porphyry

MID-CRETACEOUS

- mKgW: WHITEHORSE SUITE: Bt-Hbl granodiorite, Hbl quartz diorite and Hbl diorite
- mKqW: WHITEHORSE SUITE: Bt quartz monzonite, Bt granite and leucogranite
- mKN: MOUNT NANSEN: massive aphyric or feldspar-phyric andesite to dacite flows

UPPER CRETACEOUS

- uKC1: CARMACKS: augite-olivine basalt and breccia
- uKC2: CARMACKS: andesite, porphyry
- uKC4: CARMACKS: sandstone, pebble conglomerate, shale, tuff, and coal

LATE TRIASSIC TO EARLY JURASSIC

- LTrJgM: MINTO SUITE: foliated Bt-Hbl granodiorite; Bt-rich screens and gneissic schlieren

LATE TRIASSIC

- LTrgS: STIKINE SUITE: coarse-grained, foliated, gabbroic Hbl orthogneiss

MIDDLE TO LATE PERMIAN

- PqS: SULPHUR CREEK SUITE: variably foliated, K-feldspar augen granite, metaporphyry
- PK1: KLONDIKE SCHIST: quartz-muscovite-chlorite schist

MISSISSIPPIAN

- MgSR: SIMPSON RANGE SUITE: Hbl-bearing metagranodiorite, metadiorite and metatonalite

DEVONIAN, MISSISSIPPIAN AND(?) OLDER

- DMF1: FINLAYSON: intermediate to mafic volcanic and volcanoclastic rocks
- DMF3: FINLAYSON: dark grey to black carbonaceous metasedimentary rocks, metachert
- DMF6: FINLAYSON: ultramafic rocks, serpentinite; metagabbro

LATE DEVONIAN TO MISSISSIPPIAN

- LDgMB: MT BAKER SUITE: strongly foliated to gneissic granodiorite, diorite and monzogranite
- LDyMB: MT BAKER SUITE: strongly foliated to gneissic diorite, gabbro and minor pyroxenite

ORDOVICIAN TO LOWER DEVONIAN

- ODS: SCOTTIE CREEK: quartzite, micaceous quartzite, psammitic Qtz-Ms-Bt ± Grt schist

NEOPROTEROZOIC AND PALEOZOIC

- PDS1: SNOWCAP: quartzite, psammite, pelite and marble; minor greenstone and amphibolite
- PDS2: SNOWCAP: light grey to buff weathering marble