

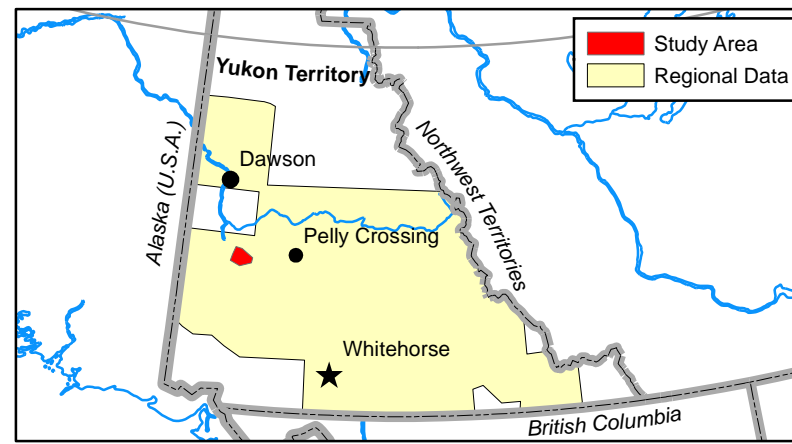
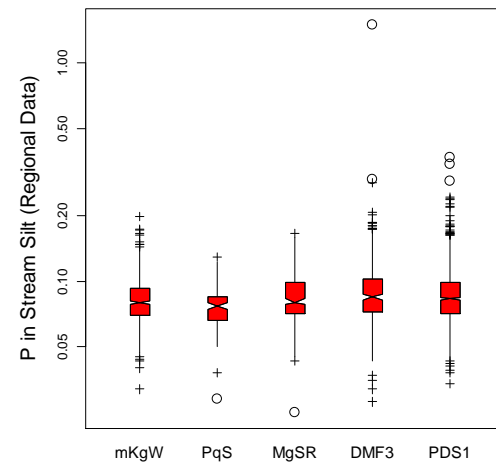
P in Stream Silt Aqua regia/ICP-MS <0.177 mm Fraction

Graduated (range-graded)
Symbol

Abbreviated
Sample Number
(115J171014)

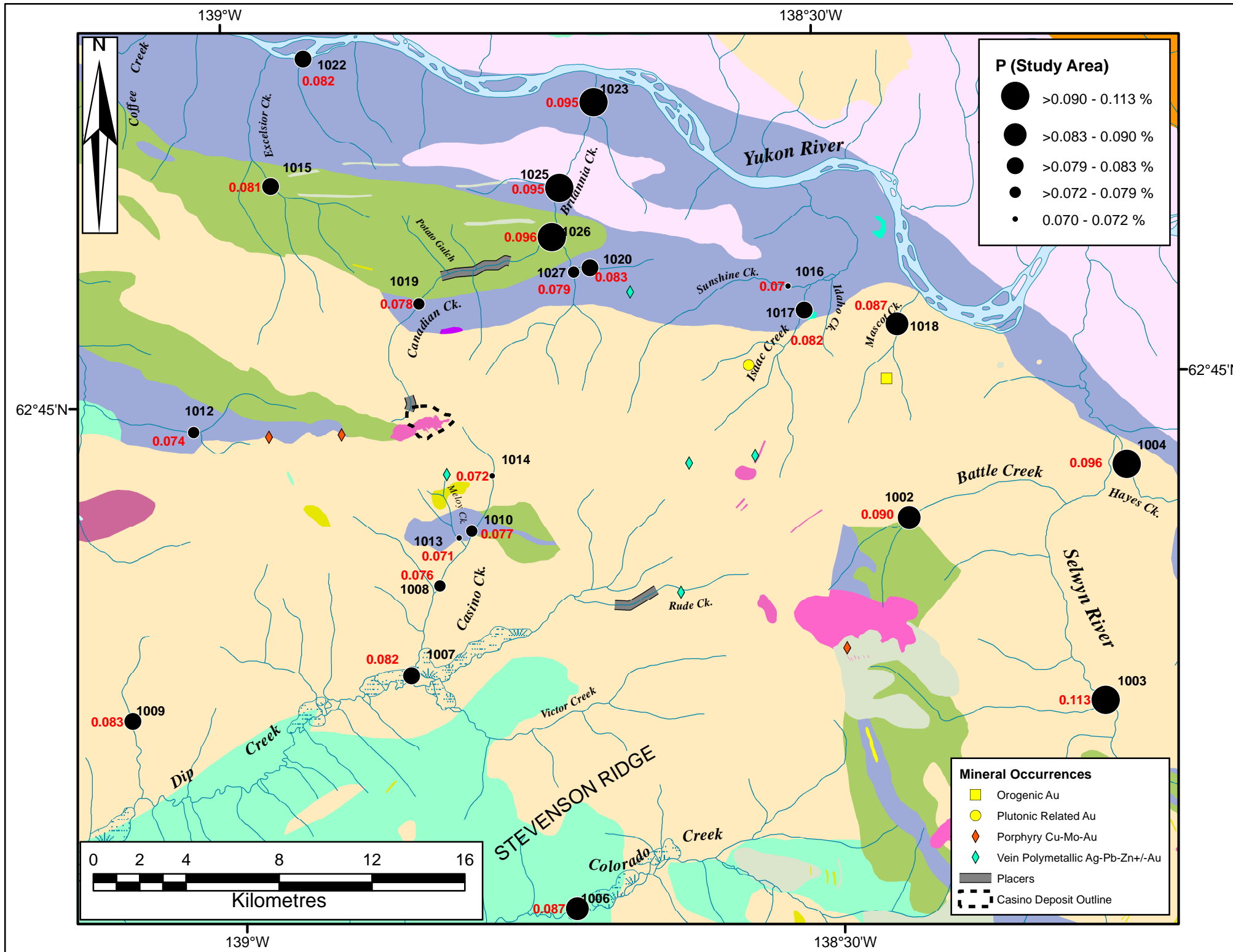
Element Concentration
at Site

1014
0.072



P*	All n=19471	mKgW n=571	PqS n=125	MgSR n=230	DMF3 n=576	PDS1 n=1210
Maximum Value	3.354	0.198	0.129	0.165	0.293	0.369
98th Percentile	0.228	0.136	0.121	0.147	0.173	0.160
95th Percentile	0.175	0.119	0.106	0.132	0.152	0.136
90th Percentile	0.141	0.106	0.096	0.117	0.127	0.119
3rd Quartile (75th)	0.106	0.093	0.085	0.099	0.102	0.099
Median (50th)	0.083	0.080	0.077	0.080	0.085	0.083
1st Quartile (25th)	0.067	0.070	0.066	0.071	0.072	0.071
10th Percentile	0.054	0.063	0.058	0.063	0.061	0.063
5th Percentile	0.046	0.060	0.054	0.055	0.056	0.057
2nd Percentile	0.039	0.055	0.050	0.049	0.049	0.052
Minimum Value	0.007	0.032	0.029	0.025	0.028	0.034
Median	0.083	0.080	0.077	0.080	0.085	0.083
MAD**	0.027	0.016	0.015	0.018	0.022	0.019
Arithmetic Mean	0.094	0.083	0.077	0.085	0.090	0.088
Standard Deviation	0.060	0.020	0.017	0.023	0.030	0.028

* Regional Data **Median Absolute Deviation



PALEOCENE TO LOWER EOCENE

- PRC1: RHYOLITE CREEK: light grey, green, maroon, purple and black rhyolite and dacite
- PRC2: RHYOLITE CREEK: maroon to reddish purple, fine to very coarse grained andesite

LATE CRETACEOUS TO TERTIARY

- LKyP: PROSPECTOR MOUNTAIN SUITE: syenite
- LKfC: CASINO SUITE: quartz-feldspar porphyry

MID-CRETACEOUS

- mKgW: WHITEHORSE SUITE: Bt-Hbl granodiorite, Hbl quartz diorite and Hbl diorite
- mKqW: WHITEHORSE SUITE: Bt quartz monzonite, Bt granite and leucogranite
- mKN: MOUNT NANSEN: massive aphyric or feldspar-phyric andesite to dacite flows

UPPER CRETACEOUS

- uKC1: CARMACKS: augite-olivine basalt and breccia
- uKC2: CARMACKS: andesite, porphyry
- uKC4: CARMACKS: sandstone, pebble conglomerate, shale, tuff, and coal

LATE TRIASSIC TO EARLY JURASSIC

- LTrEJgM: MINTO SUITE: foliated Bt-Hbl granodiorite; Bt-rich screens and gneissic schlieren

LATE TRIASSIC

- LTrgS: STIKINE SUITE: coarse-grained, foliated, gabbroic Hbl orthogneiss

MIDDLE TO LATE PERMIAN

- PqS: SULPHUR CREEK SUITE: variably foliated, K-feldspar augen granite, metaporphyry
- PK1: KLONDIKE SCHIST: quartz-muscovite-chlorite schist

MISSISSIPPIAN

- MgSR: SIMPSON RANGE SUITE: Hbl-bearing metagranodiorite, metadiorite and metatonalite

DEVONIAN, MISSISSIPPIAN AND(?) OLDER

- DMF1: FINLAYSON: intermediate to mafic volcanic and volcanoclastic rocks
- DMF3: FINLAYSON: dark grey to black carbonaceous metasedimentary rocks, metachert
- DMF6: FINLAYSON: ultramafic rocks, serpentinite; metagabbro

LATE DEVONIAN TO MISSISSIPPIAN

- LDgMB: MT BAKER SUITE: strongly foliated to gneissic granodiorite, diorite and monzogranite
- LDyMB: MT BAKER SUITE: strongly foliated to gneissic diorite, gabbro and minor pyroxenite

ORDOVICIAN TO LOWER DEVONIAN

- ODS: SCOTTIE CREEK: quartzite, micaceous quartzite, psammitic Qtz-Ms-Bt ± Grt schist

NEOPROTEROZOIC AND PALEOZOIC

- PDS1: SNOWCAP: quartzite, psammite, pelite and marble; minor greenstone and amphibolite
- PDS2: SNOWCAP: light grey to buff weathering marble