

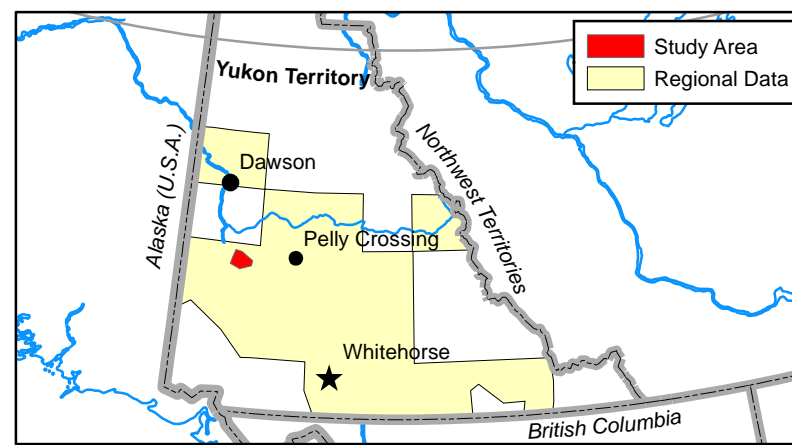
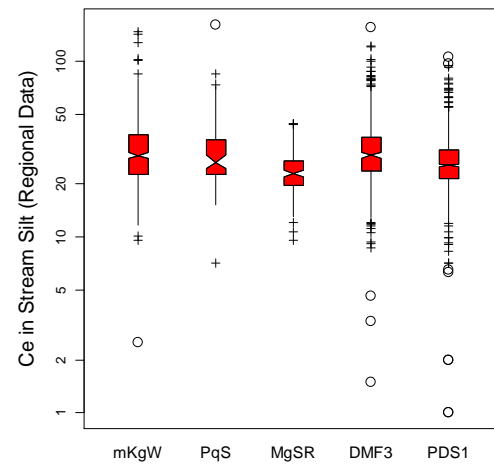
# Ce in Stream Silt Aqua regia/ICP-MS <0.177 mm Fraction

Graduated (range-graded)  
Symbol

Abbreviated  
Sample Number  
(115J171014)

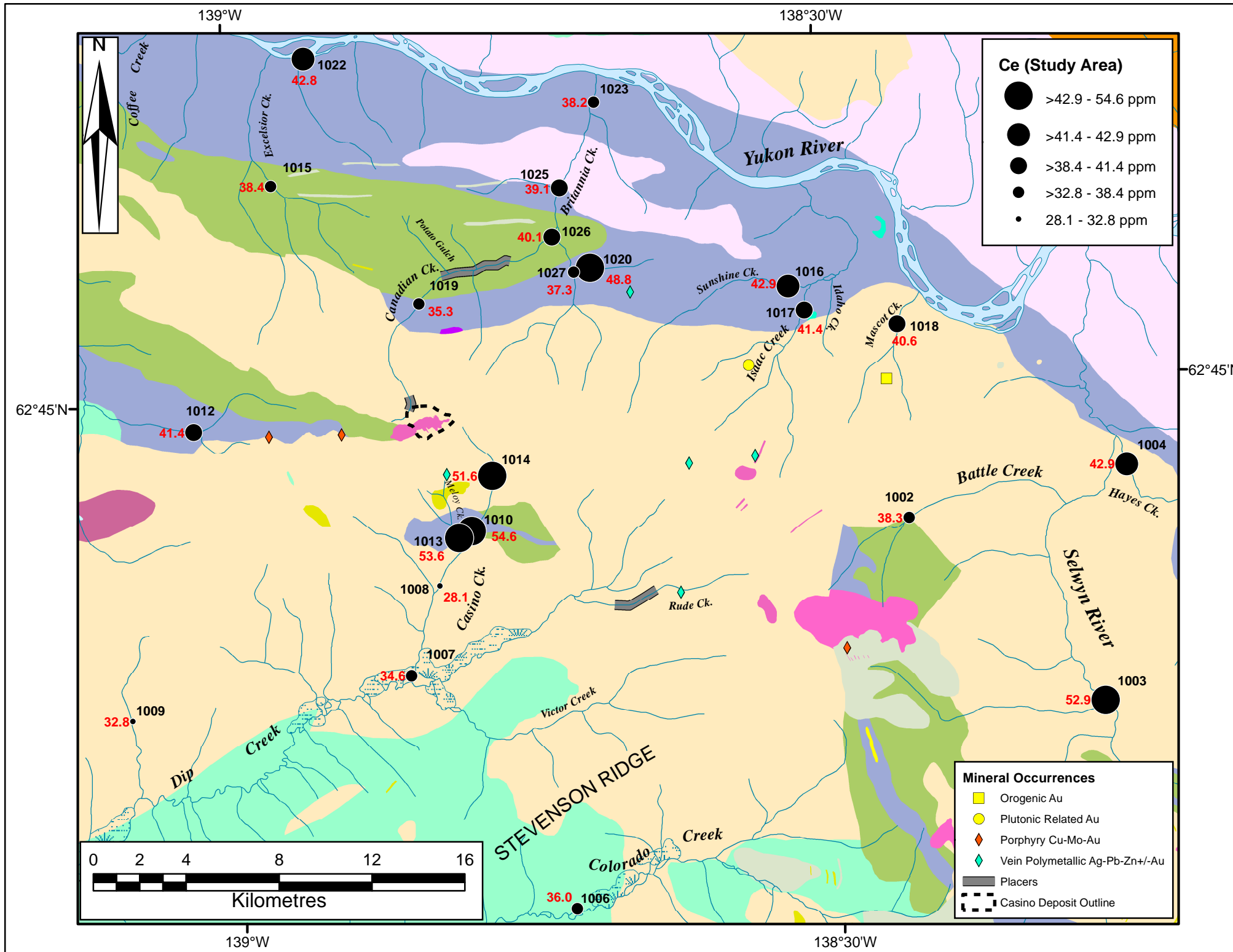
Element Concentration  
at Site

51.6 ● 1014



Ce*	All n=15706	mKqW n=571	PqS n=125	MgSR n=230	DMF3 n=540	PDS1 n=1144
Maximum Value	325.4	147.8	161.5	44.1	155.1	105.4
98th Percentile	75.5	71.0	72.6	40.4	79.6	52.9
95th Percentile	58.8	57.2	62.3	37.1	57.7	45.4
90th Percentile	49.0	48.2	48.9	32.5	49.2	38.7
3rd Quartile (75th)	36.2	38.1	35.9	27.0	37.0	31.2
Median (50th)	26.3	29.0	26.4	23.1	29.3	25.5
1st Quartile (25th)	19.9	22.8	22.6	19.7	23.8	21.5
10th Percentile	15.3	19.0	21.2	18.0	20.5	18.5
5th Percentile	12.2	16.5	19.4	16.5	18.3	16.1
2nd Percentile	8.3	14.3	16.6	15.1	12.7	14.0
Minimum Value	0.7	2.5	7.1	9.6	3.3	1.0
Median	26.3	29.0	26.4	23.1	29.3	25.5
MAD**	11.1	10.8	6.8	5.1	9.4	6.7
Arithmetic Mean	30.3	32.3	31.8	24.1	32.9	27.6
Standard Deviation	17.7	15.1	17.3	6.1	15.4	10.2

\* Regional Data \*\*Median Absolute Deviation



## PALEOCENE TO LOWER EOCENE

- PRC1: RHYOLITE CREEK: light grey, green, maroon, purple and black rhyolite and dacite
- PRC2: RHYOLITE CREEK: maroon to reddish purple, fine to very coarse grained andesite

## LATE CRETACEOUS TO TERTIARY

- LKyP: PROSPECTOR MOUNTAIN SUITE: syenite
- LKfC: CASINO SUITE: quartz-feldspar porphyry

## MID-CRETACEOUS

- mKqW: WHITEHORSE SUITE: Bt-Hbl granodiorite, Hbl quartz diorite and Hbl diorite
- mKqW: WHITEHORSE SUITE: Bt quartz monzonite, Bt granite and leucogranite
- mKN: MOUNT NANSEN: massive aphyric or feldspar-phyric andesite to dacite flows

## UPPER CRETACEOUS

- uKc1: CARMACKS: augite-olivine basalt and breccia
- uKc2: CARMACKS: andesite, porphyry
- uKc4: CARMACKS: sandstone, pebble conglomerate, shale, tuff, and coal

## LATE TRIASSIC TO EARLY JURASSIC

- LTrEJgM: MINTO SUITE: foliated Bt-Hbl granodiorite; Bt-rich screens and gneissic schlieren

## LATE TRIASSIC

- LTrgS: STIKINE SUITE: coarse-grained, foliated, gabbroic Hbl orthogneiss

## MIDDLE TO LATE PERMIAN

- PqS: SULPHUR CREEK SUITE: variably foliated, K-feldspar augen granite, metaporphyry
- PK1: KLONDIKE SCHIST: quartz-muscovite-chlorite schist

## MISSISSIPPIAN

- MgSR: SIMPSON RANGE SUITE: Hbl-bearing metagranodiorite, metadiorite and metatonalite

## DEVONIAN, MISSISSIPPIAN AND(?) OLDER

- DMF1: FINLAYSON: intermediate to mafic volcanic and volcanoclastic rocks
- DMF3: FINLAYSON: dark grey to black carbonaceous metasedimentary rocks, metachert
- DMF6: FINLAYSON: ultramafic rocks, serpentinite; metagabbro

## LATE DEVONIAN TO MISSISSIPPIAN

- LDgMB: MT BAKER SUITE: strongly foliated to gneissic granodiorite, diorite and monzogranite
- LDyMB: MT BAKER SUITE: strongly foliated to gneissic diorite, gabbro and minor pyroxenite

## ORDOVICIAN TO LOWER DEVONIAN

- ODS: SCOTTIE CREEK: quartzite, micaceous quartzite, psammitic Qtz-Ms-Bt ± Grt schist

## NEOPROTEROZOIC AND PALEOZOIC

- PDS1: SNOWCAP: quartzite, psammite, pelite and marble; minor greenstone and amphibolite
- PDS2: SNOWCAP: light grey to buff weathering marble