

LEGEND

QUATERNARY
PLEISTOCENE AND RECENT

10 Till, gravel, sand, silt, clay

TERTIARY
PALEOCENE AND LATER

8, 9 Gabbro
9. Porphyritic trachyte and latite

7 Massive and vesicular basalt, volcanic breccia, tuff

PALEOCENE

6 Sandstone, sand, conglomerate, gravel, shale, coal

JURASSIC OR CRETACEOUS
UPPER JURASSIC OR LOWER CRETACEOUS

5 Calcareous greywacke, argillite

TRIASSIC
UPPER TRIASSIC

4A, 4B 4A. Massive limestone
4B. Thinly interbedded argillite and limestone

PERMIAN (in part or entirely)

3 Mainly chloritic lava and tuff, in part schistose; minor, less altered sedimentary and volcanic rocks; 3A, Lower part: volcanic conglomerate, agglomerate, altered andesite and tuff; in places schistose; Upper part: chert, cherty tuff, limestone, greywacke, chert-pebble conglomerate; gabbroic basalt; 3B, andesite, tuff; minor, coarse-grained basalt

DEVONIAN AND (?) LATER

2A, 2B 2A. Limestone, slate, argillite, schist
2B. Chlorite schist, phyllite, chloritic greywacke, tuff

YUKON GROUP

1A, 1B, 1C 1A. Mainly gneiss; minor dunite and pyroxenite
1B. Quartz-mica schist, quartzite, amphibolite
1C. Dolomitic limestone, chlorite schist, quartzite

A1, A5, A6 A1. Porphyritic granite
A2. Hornblende-and/or biotite-bearing diorite; quartz diorite, monzonite; locally gneissic
A3. Potash granite, syenite, and rhyolite; considerable migmatite; augen-gneiss
A4. Gabbro
A5. Latite, commonly porphyritic
A6. Peridotite

Bedding (horizontal, inclined, vertical, overturned) + / / / /
Schistosity (inclined, vertical) / / / / /
Foliation (inclined, vertical) / / / / /
Fault (occurrence and position assumed) ~ ~ ~ ~ ~
Syncline ~ ~ ~ ~ ~
Fossil locality ⊙
Placer deposit X
Mineral occurrence (Ni, nickel; Pt, platinum; Cu, copper) X

Geology by J. E. Muller, 1950, 1951, 1952

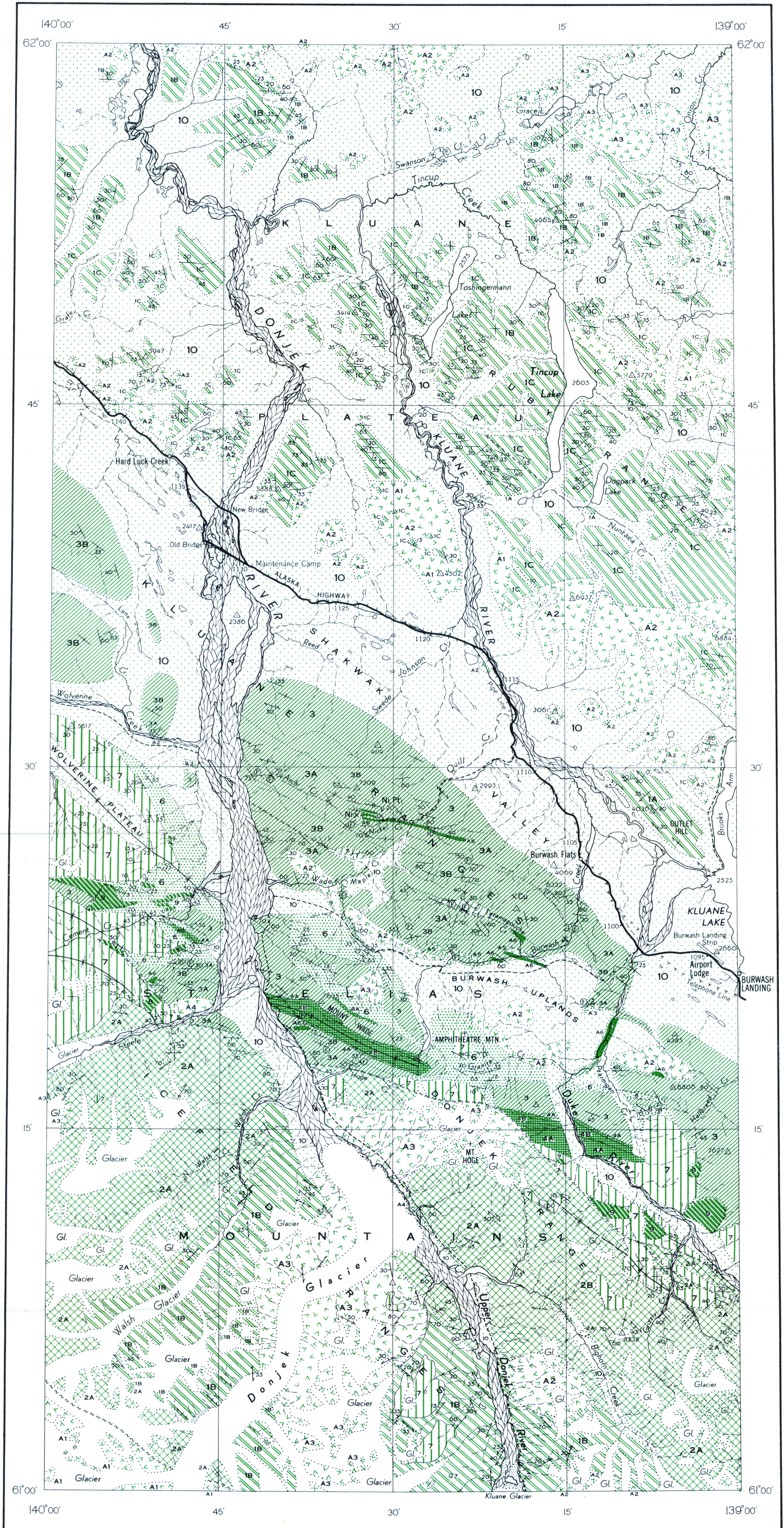
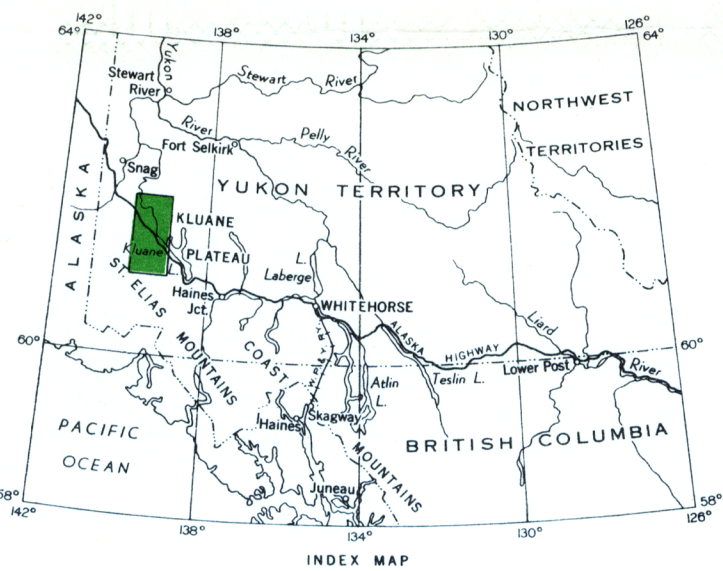
Highway and mile post 1095
Trail
Triangulation station
Stream in dry river bed
Sand, gravel or mud
Glacier
Height in feet above mean sea-level 2650

Cartography by Geological Cartography Division, 1953

Air photographs covering this map-area may be obtained through the National Air Photographic Library, Topographical Survey, Ottawa, Ontario

Approximate magnetic declination, 30° 25' East

Geographical names subject to revision



PUBLISHED, 1953

PRELIMINARY MAP 53-20

KLUANE LAKE
(WEST HALF)
YUKON TERRITORY

Scale: One Inch to Four Miles = $\frac{1}{253,440}$



This document was produced by scanning the original publication.

Ce document est le produit d'une numérisation par balayage de la publication originale.