

**LEGEND**

**CENOZOIC OR MESOZOIC**

**6** Basalt, diabase, gabbro

**UPPER OR LOWER CRETACEOUS**

**5** HASSEL FORMATION: sandstone, shale, limestone

**LOWER CRETACEOUS**

**4** CHRISTOPHER FORMATION: shale, minor limestone

**3** ISACHSEN FORMATION: sandstone

**2** DEER BAY FORMATION: shale

**PALAEZOIC (UNDIVIDED)**

**1** Anhydrite, gypsum, selenite limestone

Geological boundary (approximate, assumed) ..... - - - - -

Limit of geological mapping ..... - - - - -

Bedding (horizontal, inclined, vertical, overturned) ..... + / / / /

Stratiform foliation (inclined, vertical, dip unknown) ..... / / / / /

Fault (defined, approximate) ..... - - - - -

Fossil locality ..... ⊙

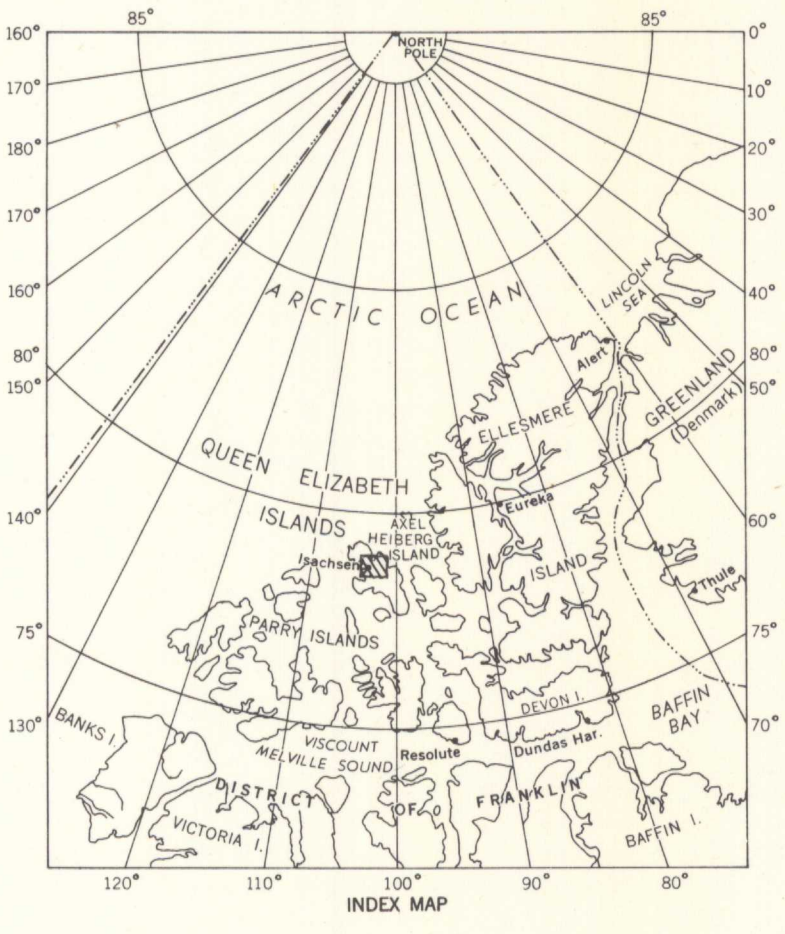
Geology by W. W. Heywood, 1952, 1953.

Approximate magnetic declination 164° West

Cartography by the Geological Cartography Unit 1957

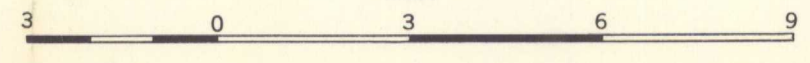
Air photographs covering this map-area may be obtained through the National Air Photographic Library, Topographical Survey, Ottawa, Ontario

Geographical names subject to revision



MAP 15-1956  
TO ACCOMPANY PAPER 56-8  
**ISACHSEN AREA**  
ELLEF RINGNES ISLAND  
DISTRICT OF FRANKLIN  
NORTHWEST TERRITORIES

Scale: One Inch to Three Miles =  $\frac{1}{190,080}$  Miles



LIBRARY / BIBLIOTHÈQUE  
GEOLOGICAL SURVEY  
COMMISSION GÉOLOGIQUE  
A. S. L. 1989

MAP LIBRARY / CARTOTHÈQUE

G  
3401  
.C5  
1956  
G4  
omvsc

15-1956  
C 2

MAP 15-1956  
ISACHSEN AREA  
NORTHWEST TERRITORIES