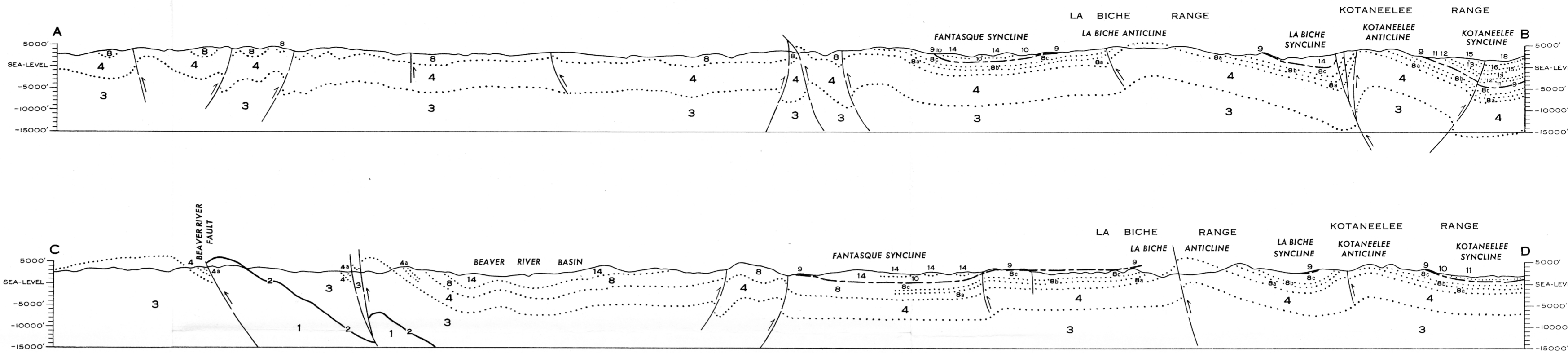


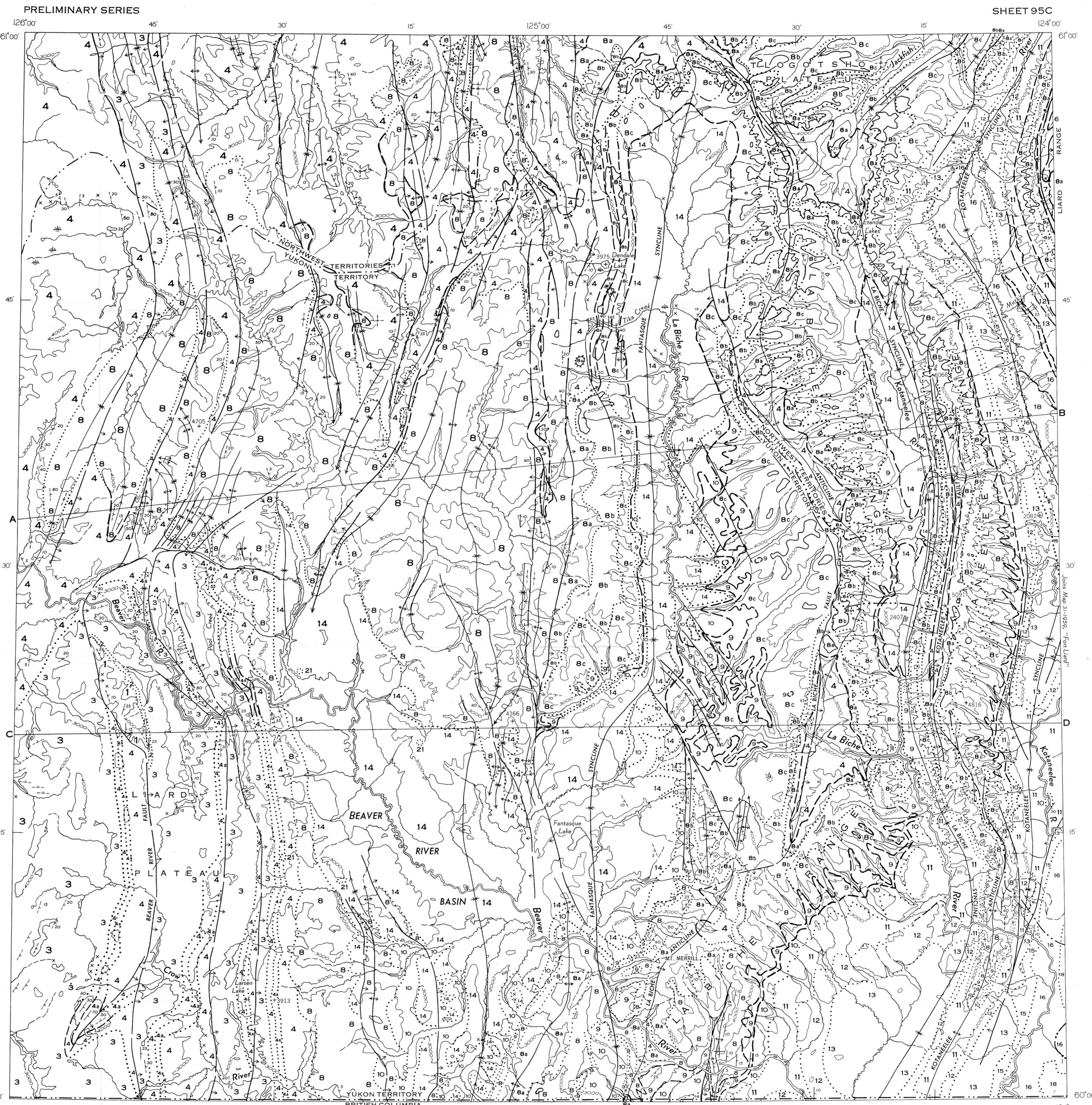


GEOLOGICAL SURVEY OF CANADA
DEPARTMENT OF MINES AND TECHNICAL SURVEYS



SECTIONS ALONG LINES A-B AND C-D

- LEGEND**
- Map-units 3 to 9, 11 to 20 and 22 appear on Map 31-1959, "Fort Liard"
- Map-units 1 to 4, 6 to 16, 18 and 21 appear on Map 32-1959, "La Biche"
- CENOZOIC**
- PLEISTOCENE AND RECENT**
- 22 Alluvial sands and silts of Liard River
- CRETACEOUS OR LATER**
- 21 Lithology unknown
- CRETACEOUS**
- UPPER CRETACEOUS**
- 20 WAPITI FORMATION: banded sandstone, thin coal
- 19 KOTANEELLE FORMATION: dark grey, concretionary shale, mudstone, grey sandstone
- 18 FORT NELSON FORMATION: carbonaceous, sandstone and pebble-conglomerate, dark grey shale, siltstone
- LOWER CRETACEOUS**
- FORT ST. JOHN GROUP (10-16)**
- 16 SIKANNI FORMATION (15-16): Dark grey, concretionary shale, gypsiferous in part
- 15 Greenish grey sandstone, siltstone, shale
- 17 FORT ST. JOHN GROUP: undivided
- 13 BUCKINGHORSE FORMATION (10-13): Concretionary and rusty weathering shale
- 12 Greenish-grey sandstone
- 14 BUCKINGHORSE FORMATION: undivided
- 11 Concretionary and rusty weathering shale, pebble-conglomerate and grey sandstone
- 10 Dark grey shales; unknown recessive lithology
- MESOZOIC**
- PERMIAN (?)**
- 9 Thick grey chert, grey sandstone, mudstone (on section only)
- PERMIAN AND CARBONIFEROUS**
- 8 MATTSON FORMATION: sandstone, shale, limestone (may include map-unit 9); 8a, lower part: grey sandstone, coal; 8b, middle part: grey to brown sandstone; 8c, upper part: grey sandstone, fossiliferous sandstone, shale
- MISSISSIPPIAN**
- 7 Grey, fossiliferous limestone, grey shale, thin grey sandstone
- 6 Black shale, thin limestone
- 5 Brown weathering sandstone, siltstone, shale
- PALAEZOZOIC**
- MISSISSIPPIAN AND DEVONIAN**
- 4 Dark grey shale; sandstone; 4a, may include equivalents of Nahanni Formation, and map-units 5 to 7
- DEVONIAN**
- MIDDLE DEVONIAN AND EARLIER**
- 3 Grey banded dolomite, granular, porous dolomite, coralliferous limestone (includes Nahanni Formation)
- 2 Boulder conglomerate (on section only)
- PROTEROZOIC(?)**
- 1 Green, laminated argillite



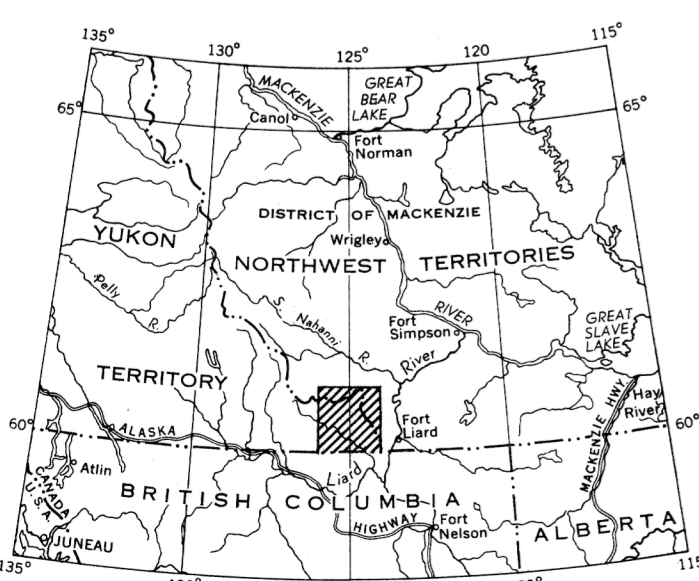
PUBLISHED, 1959. COPIES OF THIS MAP MAY BE OBTAINED FROM THE DIRECTOR, GEOLOGICAL SURVEY OF CANADA, OTTAWA. PRINTED BY THE SURVEYS AND MAPPING BRANCH

MAP 32-1959
GEOLOGY
TO ACCOMPANY PAPER 59-6
LA BICHE
DISTRICT OF MACKENZIE
NORTHWEST TERRITORIES

Scale: One Inch to Four Miles = $\frac{1}{253,440}$ Miles

Geographical names subject to revision

MAP 32-1959
LA BICHE
NORTHWEST TERRITORIES
SHEET 95C



This document was produced by scanning the original publication. Ce document est le produit d'une numérisation par balayage de la publication originale.