

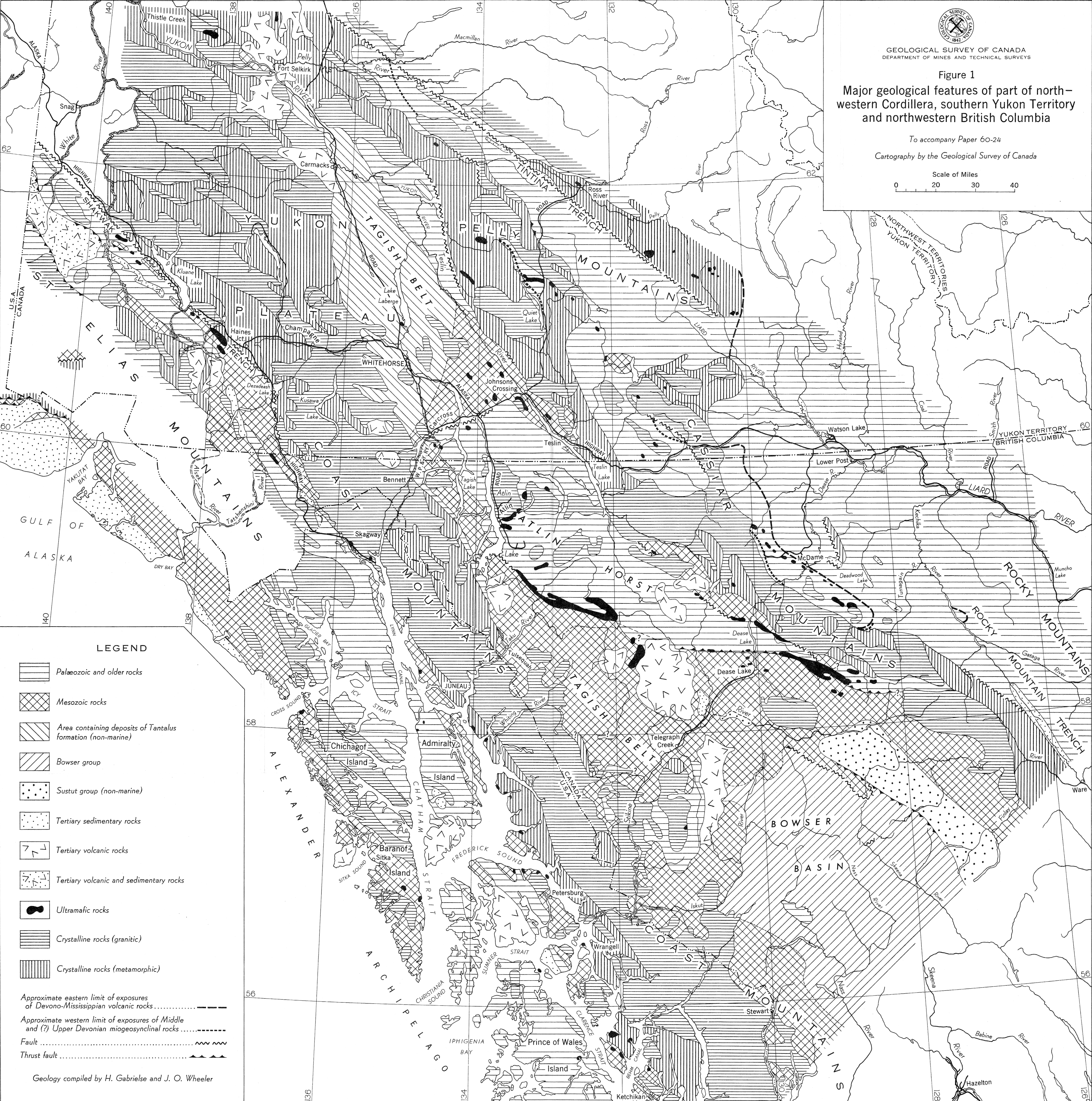
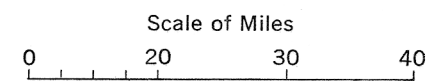


GEOLOGICAL SURVEY OF CANADA
DEPARTMENT OF MINES AND TECHNICAL SURVEYS

Figure 1
Major geological features of part of north-western Cordillera, southern Yukon Territory and northwestern British Columbia

To accompany Paper 60-24

Cartography by the Geological Survey of Canada



LEGEND

- Palaeozoic and older rocks
- Mesozoic rocks
- Area containing deposits of Tantalus formation (non-marine)
- Bowser group
- Sustut group (non-marine)
- Tertiary sedimentary rocks
- Tertiary volcanic rocks
- Tertiary volcanic and sedimentary rocks
- Ultramafic rocks
- Crystalline rocks (granitic)
- Crystalline rocks (metamorphic)

Approximate eastern limit of exposures of Devono-Mississippian volcanic rocks

Approximate western limit of exposures of Middle and (?) Upper Devonian miogeosynclinal rocks

Fault

Thrust fault

Geology compiled by H. Gabrielse and J. O. Wheeler

This document was produced by scanning the original publication. Ce document est le produit d'une numérisation par balayage de la publication originale.