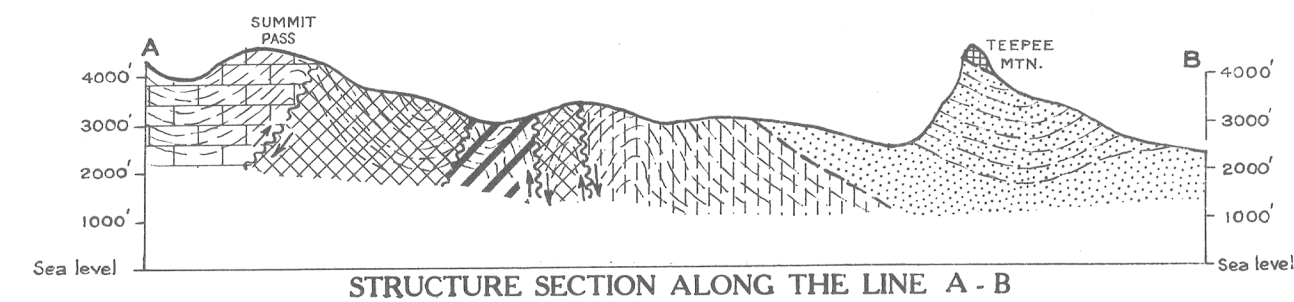


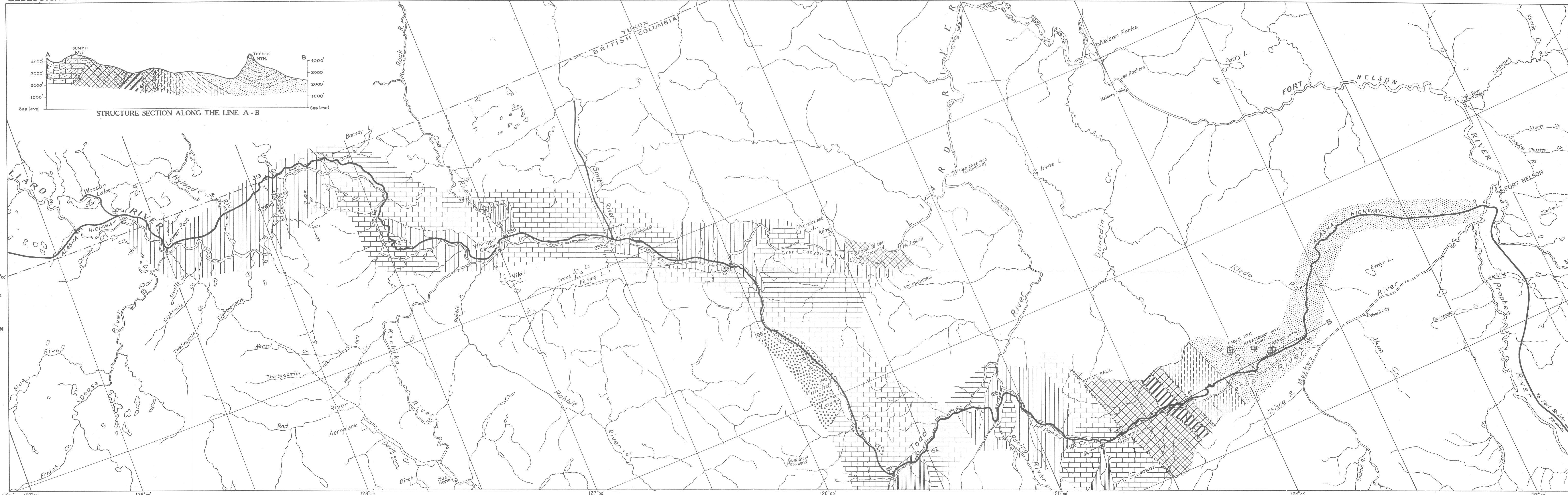
GEOLOGICAL SURVEY



LEGEND

- CENOZOIC**
- TERTIARY**  
Clay, lignite
- CRETACEOUS**
- UPPER CRETACEOUS**  
Conglomerate, sandstone
- LOWER CRETACEOUS**  
FORT ST. JOHN GROUP: shale, sandstone, sandy shale
- BULLHEAD GROUP:** siltstone, sandstone, lignitic shale
- TRIASSIC**  
Shales, calcareous argillite and sandstone, argillaceous limestone; some chert
- CARBONIFEROUS AND (?) PERMIAN**  
Limy sandstone, black shale, limestone; black chert
- DEVONIAN AND CARBONIFEROUS**  
UPPER DEVONIAN AND MISSISSIPPIAN  
Dark shales; argillite, sandstone, limestone
- SILURIAN AND DEVONIAN**  
MIDDLE SILURIAN AND MIDDLE DEVONIAN  
Limestone, interbedded sandstone; basal shale
- CAMBRIAN (?)**  
Grey sandstone, red conglomerate
- PRECAMBRIAN**  
Quartzite, slate, argillite; basic dykes
- Fault

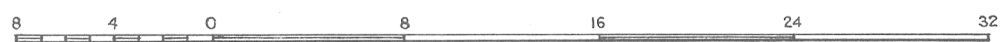
Geology by M. Y. Williams, 1943



PRELIMINARY MAP 44-28A

**ALASKA HIGHWAY  
FORT NELSON TO WATSON LAKE  
BRITISH COLUMBIA AND YUKON**

Scale: 1 inch to 8 miles



Note: Mileages along highway are approximate

Compiled by the Topographical Survey  
Issued 1944

This document was produced by scanning the original publication. Ce document est le produit d'une numérisation par balayage de la publication originale.