



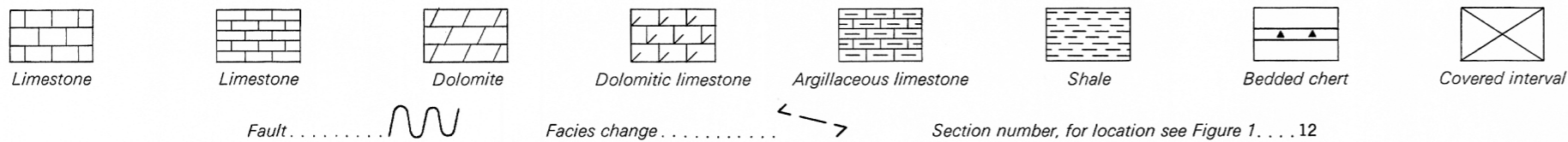
GEOLOGICAL SURVEY OF CANADA
DEPARTMENT OF MINES AND TECHNICAL SURVEYS

EAST

Figure 4
Diagrammatic cross-section, northwest Mackenzie Mountains
to western Ogilvie Mountains, Yukon Territory

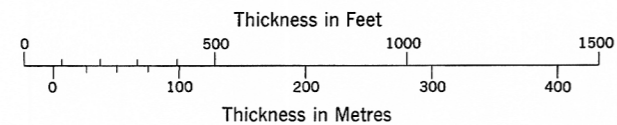
To accompany Paper 63-39 by B. S. Norford

LEGEND

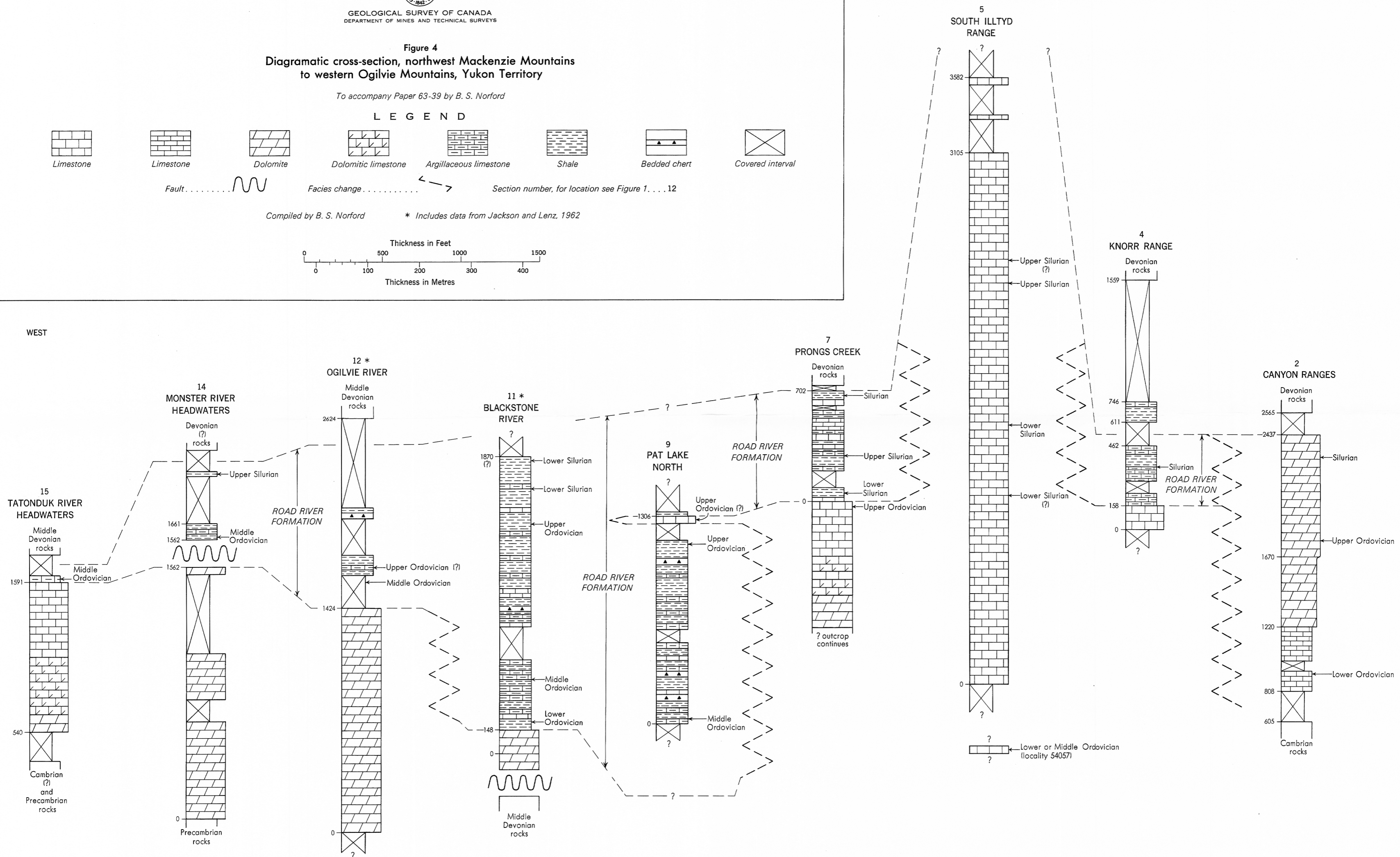


Compiled by B. S. Norford

* Includes data from Jackson and Lenz, 1962



WEST



This document was produced by scanning the original publication. Ce document est le produit d'une numérisation par balayage de la publication originale.