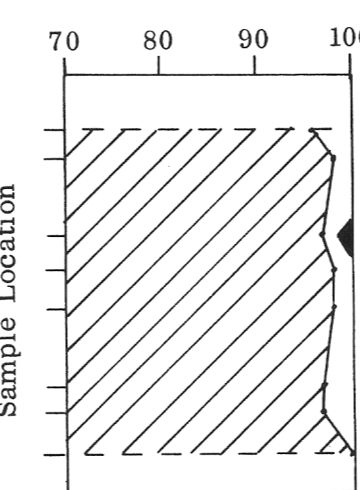
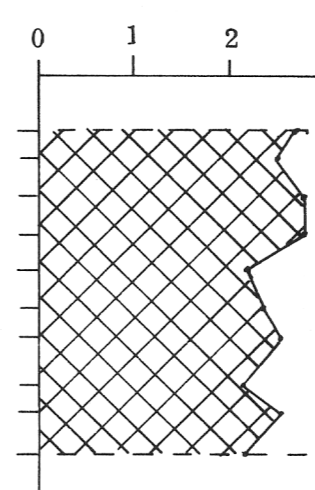


Clay Mineral Composition
Per cent



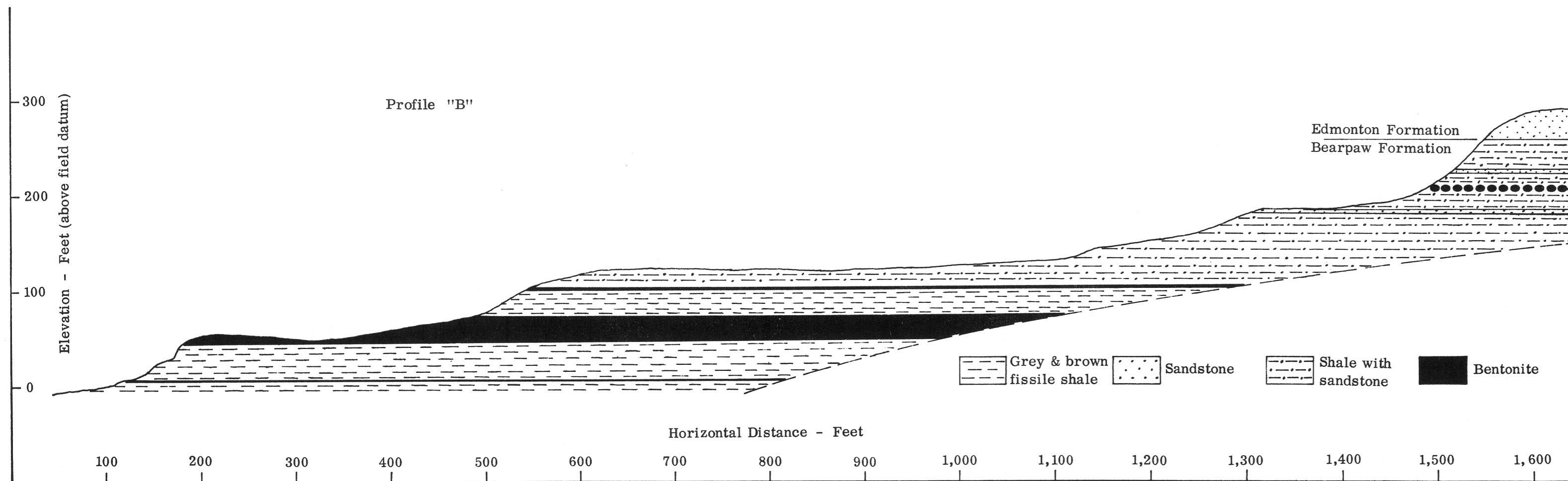
Per cent Na₂O



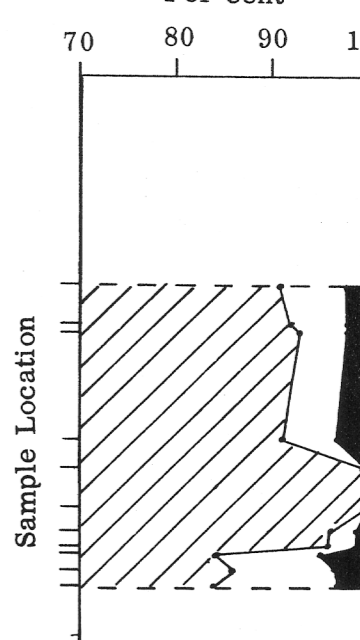
Geology and topography compiled from plane table data
by J.S. Scott, E.W. Brooker and G.W. Hollingshead, 1964.

To accompany GSC Paper 66-37 by J.S. Scott and E.W. Brooker

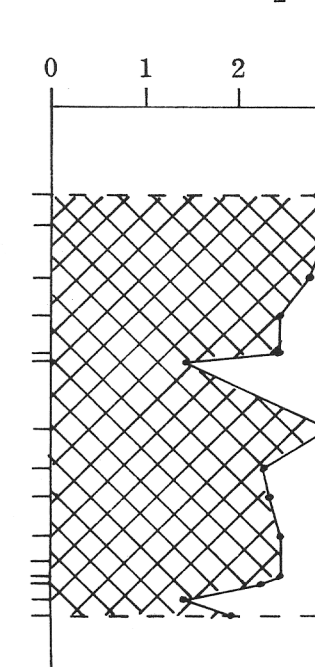
For location of profiles, see Figure 19



Clay Mineral Composition
Per cent



Per cent Na₂O



Montmorillonite
 Illite
 Chlorite

Published, 1968

This document was produced
by scanning the original publication.

Ce document est le produit d'une
numérisation par balayage
de la publication originale.

Figure 20. Profiles A and B, Red Deer River, Alberta