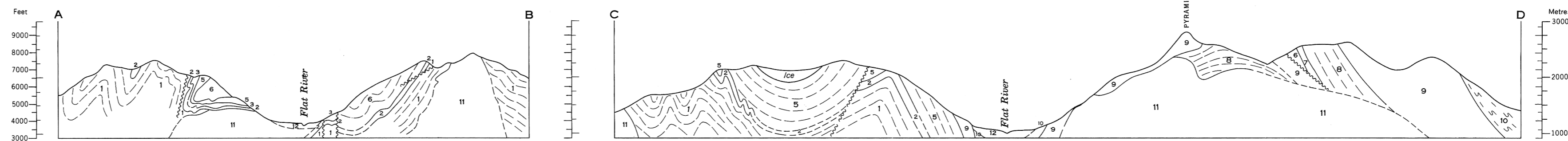




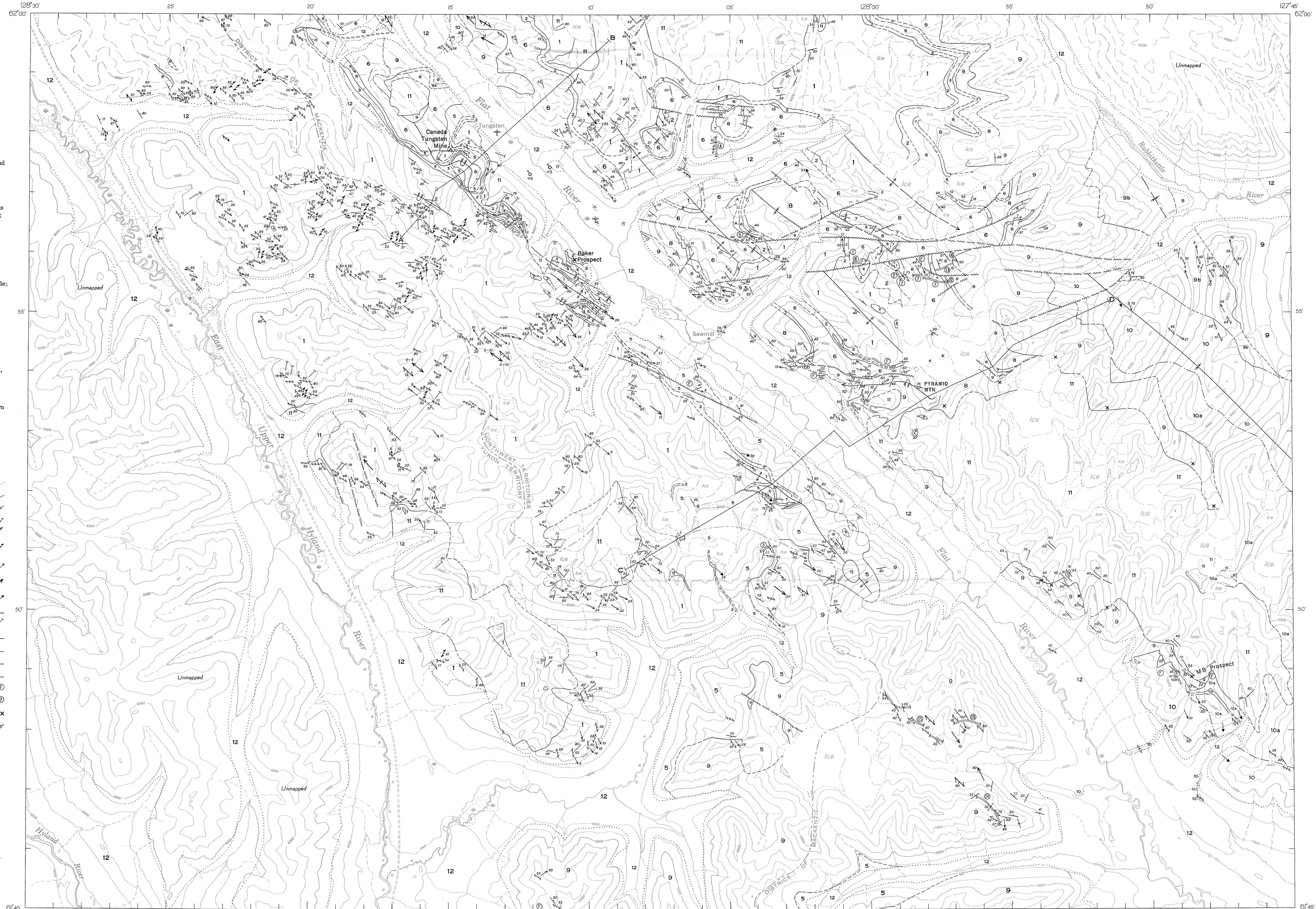
GEOLOGICAL SURVEY OF CANADA
DEPARTMENT OF ENERGY, MINES AND RESOURCES



PRELIMINARY SERIES

Sections along lines A-B and C-D

- LEGEND**
- MESOZOIC**
- PLEISTOCENE AND RECENT**
- 12 Glacio-fluvial unconsolidated deposits
- CRETACEOUS**
- 11 Biotite quartz monzonite; minor granodiorite and granite
- ORDOVICIAN AND (?) SILURIAN**
- 10 Black shale, slate; minor chert and black limestone; 10a, hornfels and spotted slate; 10b, limestone
- CAMBRIAN**
- MIDDLE AND (?) UPPER CAMBRIAN**
- 9 Limestone, silty limestone, siltstone, light grey, thin-banded, platy; 9a, black argillite, slate; minor dark grey limestone; 9b, argillaceous limestone, calcareous shale, dark grey to black, light grey-weathering
- LOWER AND/OR MIDDLE CAMBRIAN**
- 8 Dolomite, silty and sandy dolomite; minor sandstone and shale
- 7 Bright orange and yellow weathering silty and sandy dolomite
- PALAEOZOIC**
- LOWER CAMBRIAN**
- 6 Dolomite, sandstone; minor quartzite, impure limestone and silty shale; volcanic flows and tuffaceous sediments
- 5 Argillite, slate, shale, brown to black; minor limestone and dolomite
- 4 Dolomite, coarsely crystalline, massive, pinkish-orange weathering; minor dark grey platy dolomite
- 3 "Ore-limestone", coarse-grained, blue-grey marble and light grey finely crystalline limestone
- 2 "Swiss-cheese" limestone; calcareous, dolomitic siltstone with bands, pods and lenses of light grey silty limestone; minor silty shale and sandstone
- LOWER CAMBRIAN AND (?) EARLIER**
- 1 Slate, phyllite, siltstone and fine-grained quartzite, brown to red-brown weathering
- B Greenstone flows and dykes
- A Serpentinized peridotite
- Geological boundary (defined, approximate, assumed)
- Geological boundary (gradational)
- Bedding (inclined, vertical, overturned)
- Slaty cleavage (inclined, vertical)
- Statistical slaty cleavage (inclined, vertical)
- Fracture-strain slip cleavage (inclined, vertical)
- Lination, bedding-slaty cleavage intersections (horizontal, inclined)
- Statistical lination, bedding-slaty cleavage intersections (horizontal, variable, inclined)
- Lination, axes of minor folds (inclined)
- Fault (defined, approximate and assumed)
- Joint (inclined, vertical)
- Anticline (defined, approximate)
- Syncline (defined, approximate)
- Syncline (overturned)
- Anticline or syncline (arrow indicates plunge)
- Fossil locality
- Location and number of measured stratigraphic sections
- Scheelite occurrence or prospect
- Hot spring



Geology by S. L. Blusson, 1962, 1963

To accompany GSC Paper 67-22 by S. L. Blusson

Geological cartography by the Geological Survey of Canada, 1967

Base-map cartography by the Geological Survey of Canada, 1967 from unpublished maps by the Surveys and Mapping Branch in 1962 and from maps by the Army Survey Establishment, R. C. E., published at 1/250,000 scale in 1960, 1964

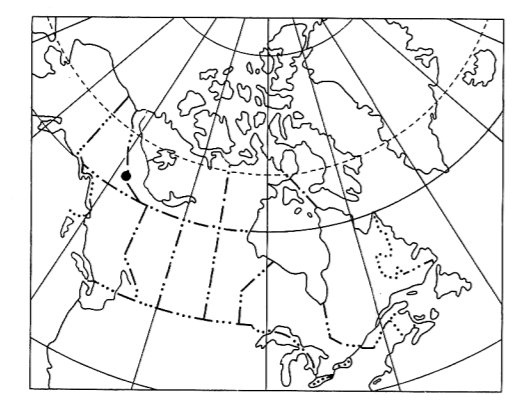
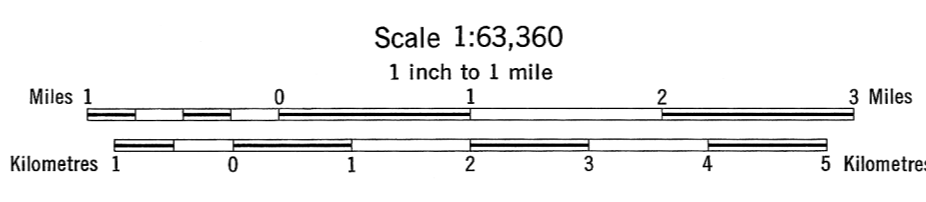
Approximate magnetic declination 1967, 33° 13' East, decreasing 5.5' annually

Elevations in feet above mean sea-level

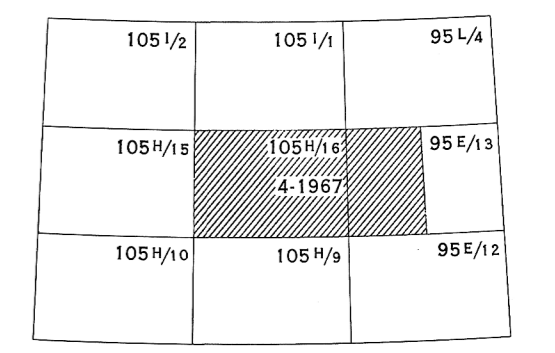
Published, 1968

Printed by the Surveys and Mapping Branch

MAP 4-1967
PAPER 67-22
GEOLOGY
VICINITY OF CANADA TUNGSTEN MINE
YUKON TERRITORY AND DISTRICT OF MACKENZIE



INDEX MAP



NATIONAL TOPOGRAPHIC SYSTEM REFERENCE
VICINITY OF CANADA TUNGSTEN MINE
YUKON TERRITORY AND DISTRICT OF MACKENZIE

This document was produced by scanning the original publication. Ce document est le produit d'une numérisation par balayage de la publication originale.