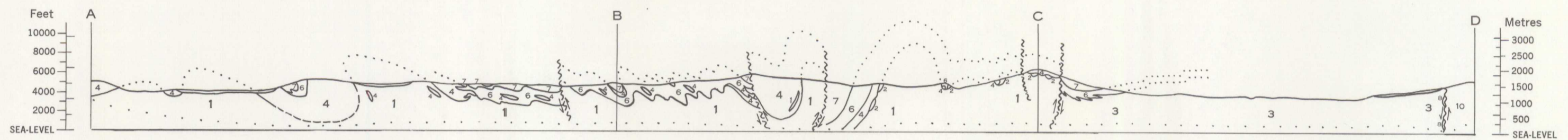




GEOLOGICAL SURVEY OF CANADA  
DEPARTMENT OF ENERGY, MINES AND RESOURCES



PRELIMINARY SERIES

Diagrammatic Cross-section A-B-C-D

LEGEND

- QUATERNARY**  
PLEISTOCENE AND RECENT  
Fluviatile and glacial deposits; areas of little or no outcrop
- TERTIARY AND QUATERNARY**  
UPPER TERTIARY AND PLEISTOCENE  
12 TUYA FORMATION: basalt
- TRIASSIC AND/OR JURASSIC**  
UPPER TRIASSIC AND/OR LOWER JURASSIC  
11 SHONKTAW FORMATION: augite andesite  
10 NAZCHA FORMATION: volcanic sandstone, argillite, tuff, conglomerate and minor limestone
- PERMIAN AND (?) LATER**  
8, 9 Ultrabasic to intermediate intrusions;  
9. Serpentinized peridotite, gabbroic, diabasic and dioritic rocks  
8. Serpentinite, carbonatized serpentine
- PERMIAN**  
CACHE CREEK GROUP  
7 TESLIN FORMATION: limestone, dolomitic limestone  
4, 5, 6 FRENCH RANGE FORMATION:  
6. Lithic tuff, agglomerate, cherty tuff and metamorphosed equivalents, minor chert and argillite  
5. Coarser intrusive (?) equivalents of 4  
4. Altered basic volcanic flow rocks
- PERMIAN AND (?) PENNSYLVANIAN**  
CACHE CREEK GROUP  
KEDAHDA FORMATION:  
3. Unit 1, but with locally interbedded volcanic sandstone  
2. Limestone, in part fossiliferous  
1. Cherty argillite, argillaceous chert that is locally graphitic, and metamorphosed equivalents; chert and argillite, very minor volcanic rocks and metamorphosed equivalents

- Geological boundary (defined, approximate and assumed) . . . . .
- Limit of geological mapping . . . . .
- Bedding, tops known (inclined, vertical) . . . . .
- Bedding, tops unknown (inclined, vertical) . . . . .
- Early foliation (inclined, vertical) . . . . .
- Foliation in Mesozoic rocks (inclined, vertical) . . . . .
- Trend and plunge of early minor fold axes and bedding, early foliation intersections . . . . .
- Trend and plunge of late minor fold axes (horizontal, inclined) . . . . .
- Direction of overturning of late minor folds; arrow indicates direction, strike bar trend of fold . . . . .
- Fault (defined, approximate, assumed; solid circle indicates downthrow side) . . . . .
- Syncline (approximate, overturned) . . . . .
- Fossil locality (referred to in Tables II and IV) . . . . .
- Fossil locality; fossils and fusulinids; commonly too poorly preserved to allow precise identification . . . . .
- Metamorphic mineral occurrence . . . . .

MINERALS

- Crossite or (?) glaucophane . . . . . cs Pumpellyite . . . . . pu
- Lawsonite . . . . . la Riebeckite . . . . . ri
- Prehnite . . . . . pr Stilpnomelane . . . . . sl

Geology by J. W. H. Monger 1968

Geological cartography by the Geological Survey of Canada 1969

Base-map cartography from part of 1/250,000 scale map "Dease Lake" published by the Army Survey Establishment R. C. E., 1950-53

Approximate magnetic declination, 29° 39' East, decreasing 4.4' annually

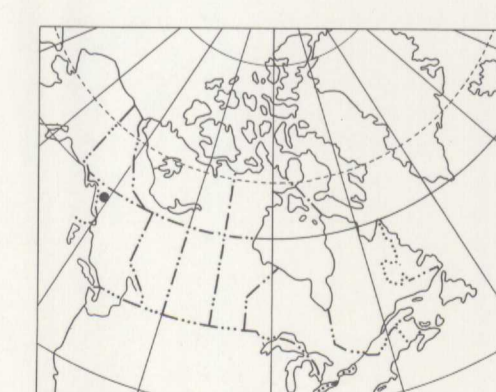
All elevations in feet above mean sea-level

To accompany GSC Paper 68-48 by J. W. H. Monger

This preliminary edition was prepared without final drafting and may be subject to revision and correction

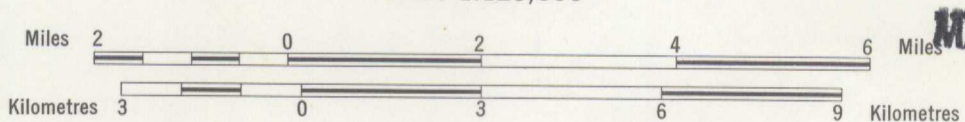


Published 1969  
Copies of this map may be obtained from the Geological Survey of Canada, Ottawa



INDEX MAP

MAP 15-1968  
PAPER 68-48  
GEOLOGY  
**DEASE LAKE**  
(Northeast Quarter)  
BRITISH COLUMBIA  
Scale 1:125,000



ESIC CIST  
OCT 8 1968  
Earth Sciences / Secteur des sciences de la Terre

DEPT. OF ENERGY, MINES & RESOURCES  
JUL 10 1969  
MAP LIBRARY

104 N	104 O	104 P
104 K	104 J	104 I
104 F	104 G	104 H

NATIONAL TOPOGRAPHIC SYSTEM REFERENCE  
DEASE LAKE  
BRITISH COLUMBIA

G 3401  
.c5  
1956  
G4  
omv/c

15-1968

612 caq c