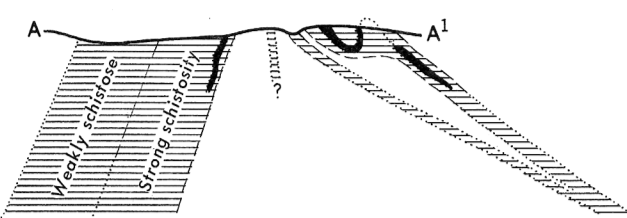
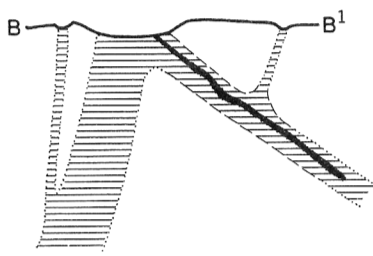




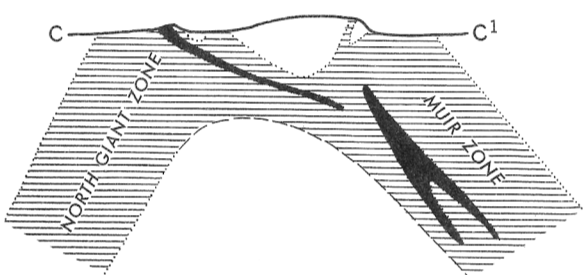
IDEALIZED STRUCTURE-SECTIONS
(Looking north)



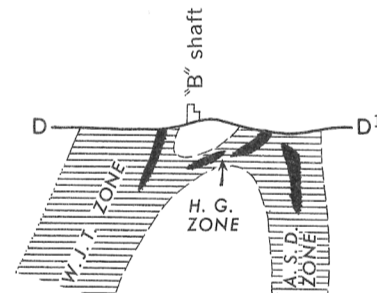
Lynx



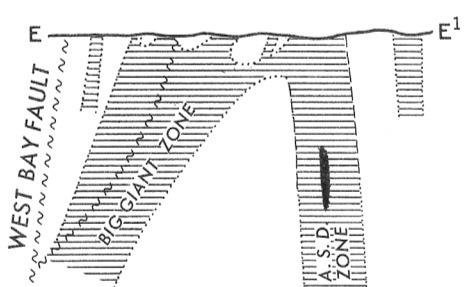
Akaitcho



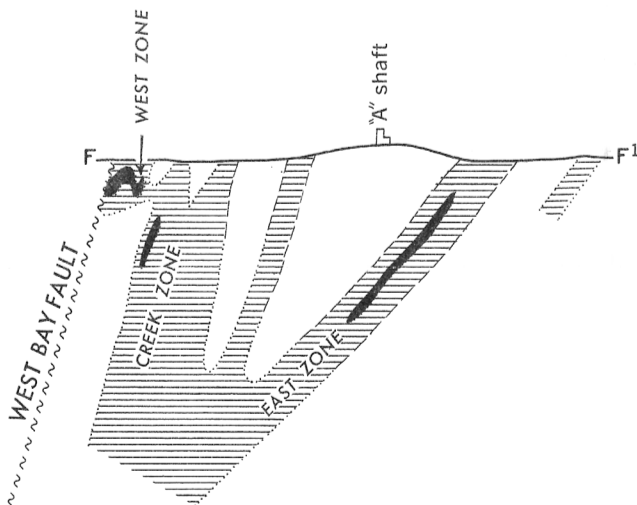
North Giant and Muir Zones



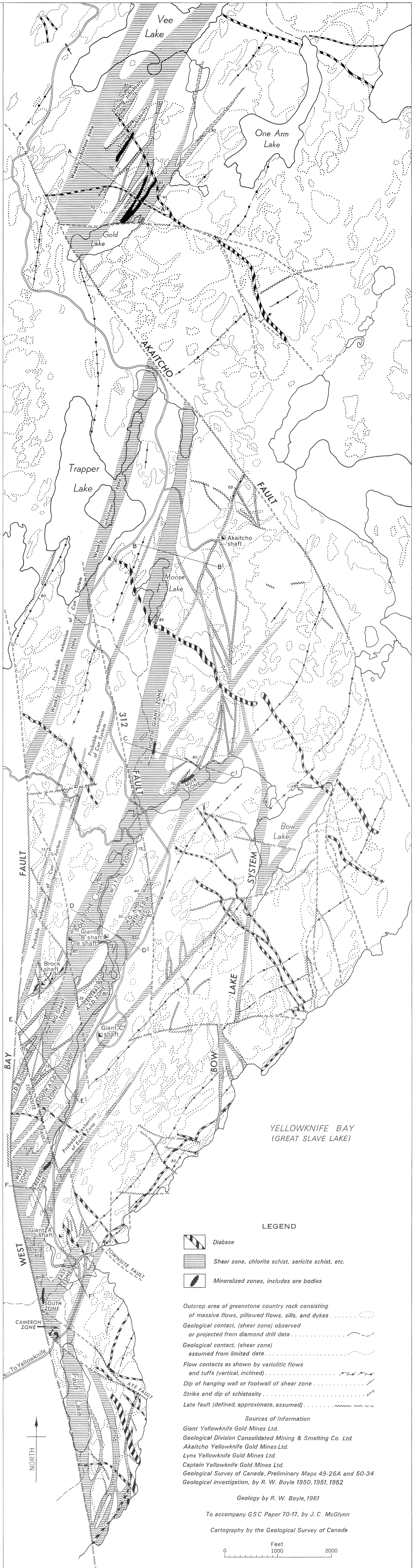
W. J. T., H. G., and A. S. D. Zones



Big Giant and Southern A. S. D. Zones



East, Creek, and West Zones



LEGEND

- Diabase
- Shear zone, chlorite schist, sericite schist, etc.
- Mineralized zones, includes ore bodies

- Outcrop area of greenstone country rock consisting of massive flows, pillowed flows, sills, and dykes
- Geological contact, (shear zone) observed or projected from diamond drill data
- Geological contact, (shear zone) assumed from limited data
- Flow contacts as shown by variolitic flows and tufts (vertical, inclined)
- Dip of hanging wall or footwall of shear zone
- Strike and dip of schistosity
- Late fault (defined, approximate, assumed)

Sources of Information

- Giant Yellowknife Gold Mines Ltd.
- Geological Division Consolidated Mining & Smelting Co. Ltd.
- Akaitcho Yellowknife Gold Mines Ltd.
- Lynx Yellowknife Gold Mines Ltd.
- Captain Yellowknife Gold Mines Ltd.
- Geological Survey of Canada, Preliminary Maps 49-26A and 50-34
- Geological investigation, by R. W. Boyle 1950, 1951, 1952

Geology by R. W. Boyle, 1961

To accompany GSC Paper 70-17, by J. C. McGlynn

Cartography by the Geological Survey of Canada

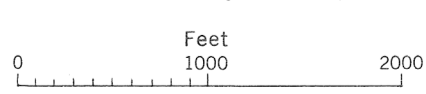


Figure 2. Surface plan and sections of the Giant system, Yellowknife area, District of Mackenzie, Northwest Territories

This document was produced by scanning the original publication.

Ce document est le produit d'une numérisation par balayage de la publication originale.