

Figure 1

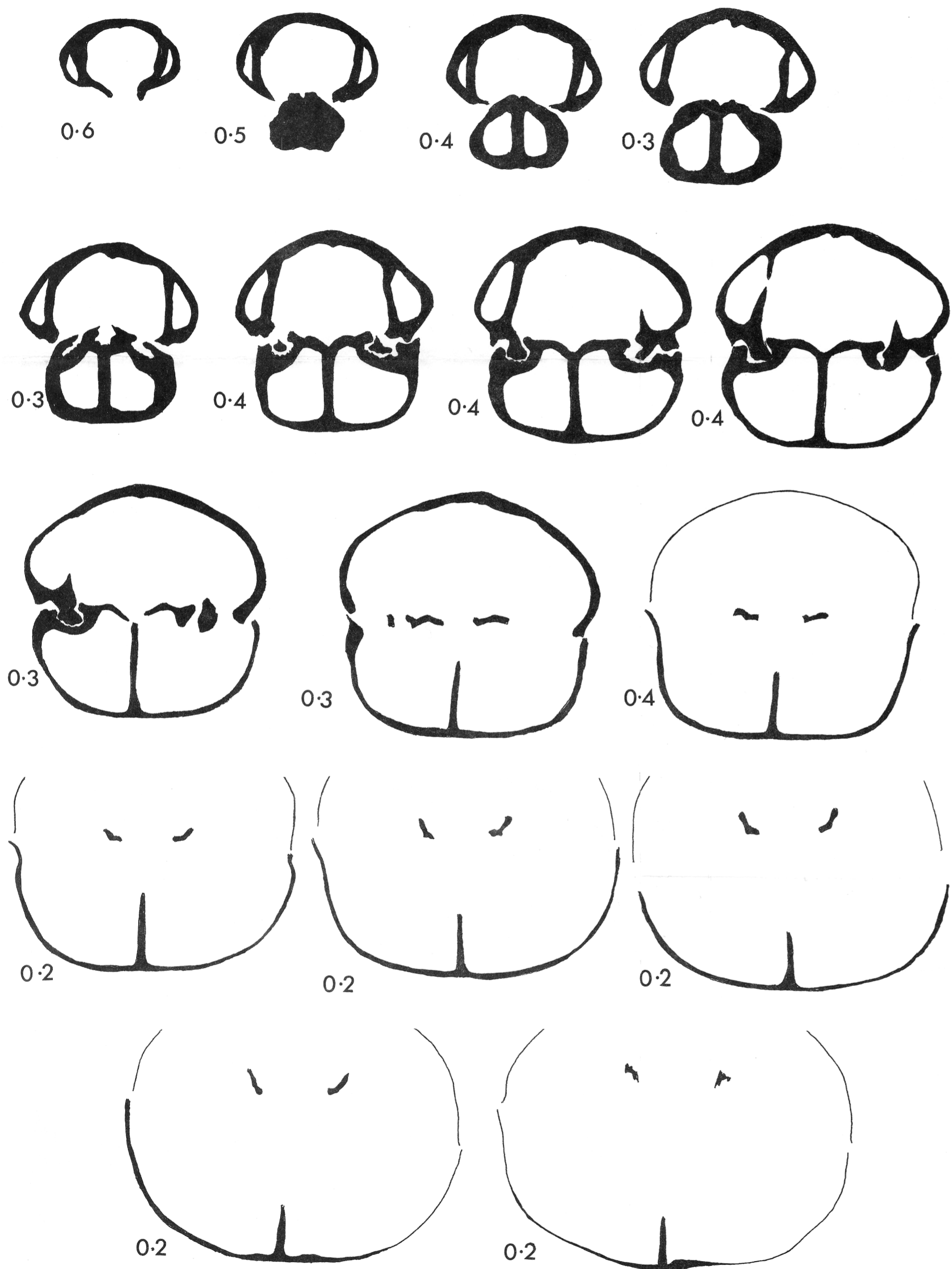
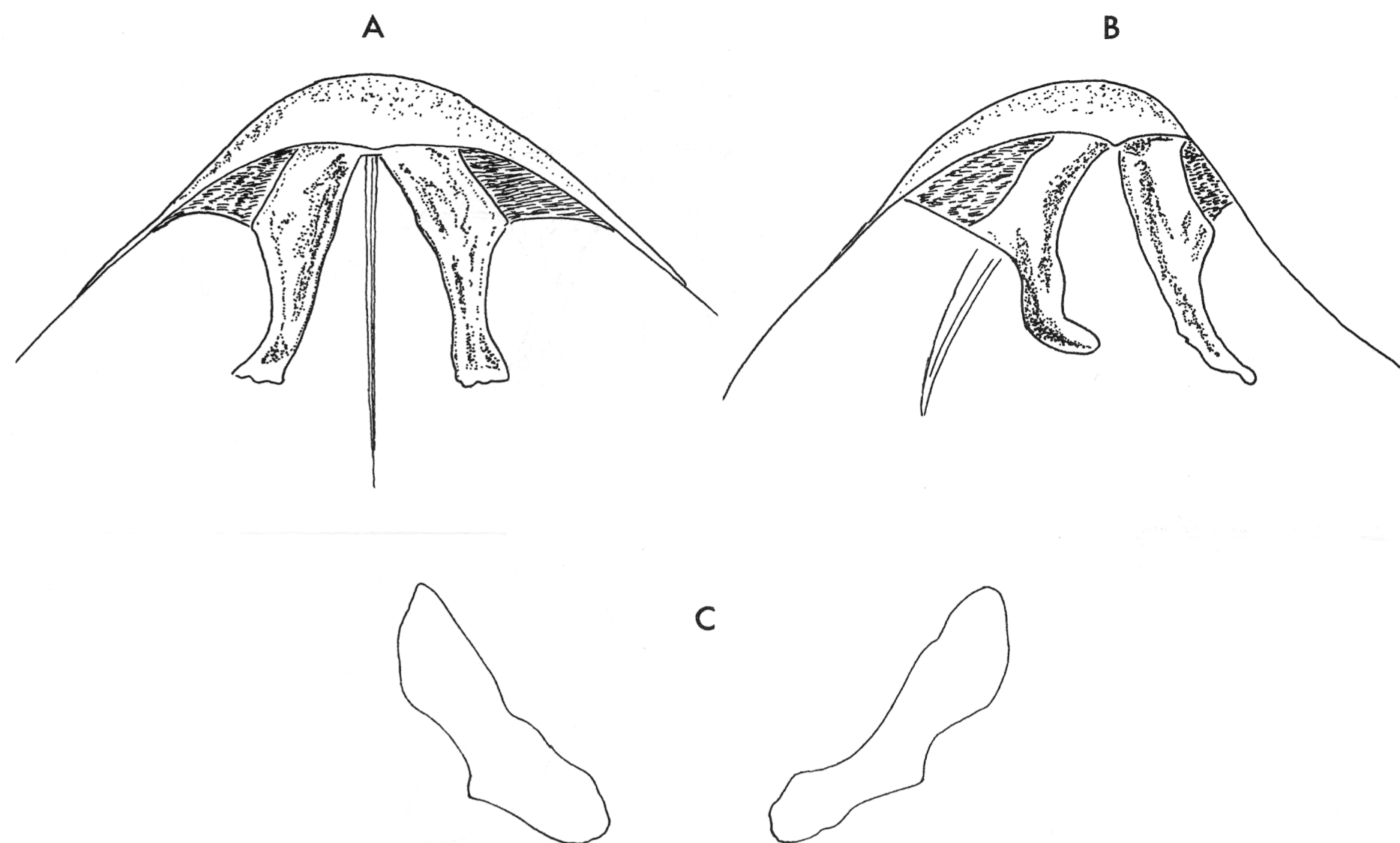


Figure 2



GEOLOGICAL SURVEY OF CANADA
DEPARTMENT OF ENERGY, MINES AND RESOURCES

Figure 1. A series of sixteen transverse serial sections through the umbo of a specimen of *Ptilorhynchia jeletzkyi* sp. nov. from the Upper Portlandian of British Columbia, showing the shallow septalium and "gutter-like" distal ends of the crura. X 3.

Figure 2. A reconstruction, based largely upon transverse serial sections, of the crura of *Ptilorhynchia jeletzkyi* sp. nov. A. Dorsal surface of the crura showing probable general outline. X 5. B. Oblique lateral view. X 5. C. Transverse section through ends of the crura showing the general outline. X 12 approx.

To accompany GSC Paper 72-26 by E.F. Owen