



GEOLOGICAL SURVEY OF CANADA
DEPARTMENT OF ENERGY, MINES AND RESOURCES

LEGEND

- PLEISTOCENE(?)**
TQbo COLUMNAR BASALT: fresh orange-weathering columnar jointed olivine basalt
- Eocene or younger**
eTcv CARMACKS GROUP: brown-weathering, brown, green and red andesite, basalt and flow breccia
eTdi DIORITE: dark brown, fine-grained diorite and gabbro
eTvp QUARTZ FELDSPAR PORPHYRY: light coloured acid quartz feldspar porphyry and rhyolite; minor acid tuff breccia, crystal lithic tuff and ignimbrite
eTcg SANDSTONE AND CONGLOMERATE: white, coarse-grained, immature terrestrial sandstone with lesser interbedded pebble conglomerate and shale; minor lignite and rare ignimbrite
- CRETACEOUS(?)**
IMqm QUARTZ MONZONITE: medium-grained equigranular biotite quartz monzonite
IMmp PORPHYRYIC MONZONITE: medium-grained, porphyritic (K-feldspar) hornblende monzonite to syenite
IMmz HORNBLENDE MONZONITE: medium-grained equigranular hornblende monzonite
- TRIASSIC(?)**
Rgdm HORNBLENDE GRANODIORITE: dark grey weathering, strongly foliated, coarse-grained equigranular biotite hornblende granodiorite
- PERMIAN(?) AND/OR TRIASSIC(?)**
PMub DUNITES: foliated serpentinitized dunite and peridotite
- CARBONIFEROUS(?) AND/OR PERMIAN(?)**
Pv SHEARED GREENSTONE: sheared and foliated chloritic greenstone and green lithic tuff; minor green cherty tuff
- PERMIAN AND/OR OLDER**
PI CHERT AND METACHERT: grey-weathering pale green and purplish brown hornfelsed argillaceous chert with lesser interbedded chloritic phyllite and marble
Pc LIMESTONE: thin-bedded limestone and marble
EPqmu FOLIATED MUSCOVITE QUARTZ MONZONITE: foliated equigranular medium-grained muscovite quartz monzonite
EPc MARBLE: coarsely crystalline white graphite marble
EPgd FOLIATED BIOTITE GRANODIORITE: foliated to gneissic biotite granodiorite; minor interfoliated phyllite, schist and amphibolite
EPqs NASINA QUARTZITE: black-weathering, massive, dark grey to black graphitic quartzite with lesser grey micaceous quartzite and quartz mica schist
EPqru KLONDIKE SCHIST: black and orange-weathering well foliated pale green chlorite muscovite quartz schist; includes augen gneiss and amphibolite
EPsn SCHIST GNEISS: brown-weathering, grey muscovite biotite quartzite and quartz mica schist; includes amphibolite augen gneiss and minor marble; includes rocks of Klondike Schist and Pelly Gneiss undifferentiated
EPgdn PELLY GNEISS: strongly foliated to gneissic muscovite chlorite biotite granodiorite; minor augen gneiss; includes some undifferentiated foliated muscovite quartz monzonite

- Geological boundary (defined, approximate, assumed).....
 Limit of geological mapping
 Bedding, tops known (inclined, vertical)
 Foliation (inclined, vertical)
 Lamination (horizontal, inclined)
 Fault (inferred)
 Occurrence of mafic dykes M
 Occurrence of pegmatite dykes P
 Occurrence of augen gneiss A
 Occurrence of amphibolite A
 Occurrence of conglomerate C
 Occurrence of acid volcanic dykes V
 Placer deposit P
 Metallic mineral occurrence **mpx**
 Shaft or pit **s**
 Bulldozer trenching **t**

- METALS AND MINERALS**
 Arsenopyrite.....asp Gold.....Au
 Chalcopyrite.....cp Magnetite.....mag
 Copper.....Cu Molybdenite.....mo
 Fluorite.....fl Sphalerite.....sp
 Galena.....gn

Geology by D.J. Tempelman-Kluit 1970, 1971, 1972
 To accompany Paper 73-41 by D.J. Tempelman-Kluit

This preliminary edition may be subject to revision and correction

Geological cartography by the Geological Survey of Canada

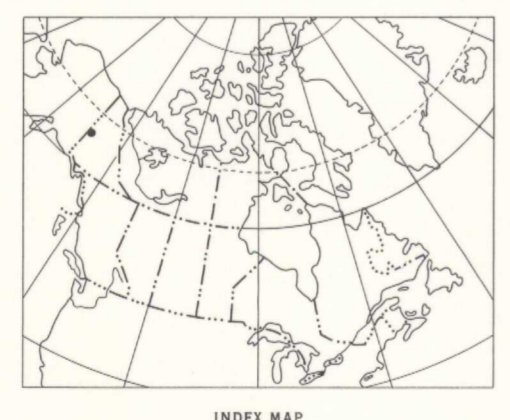
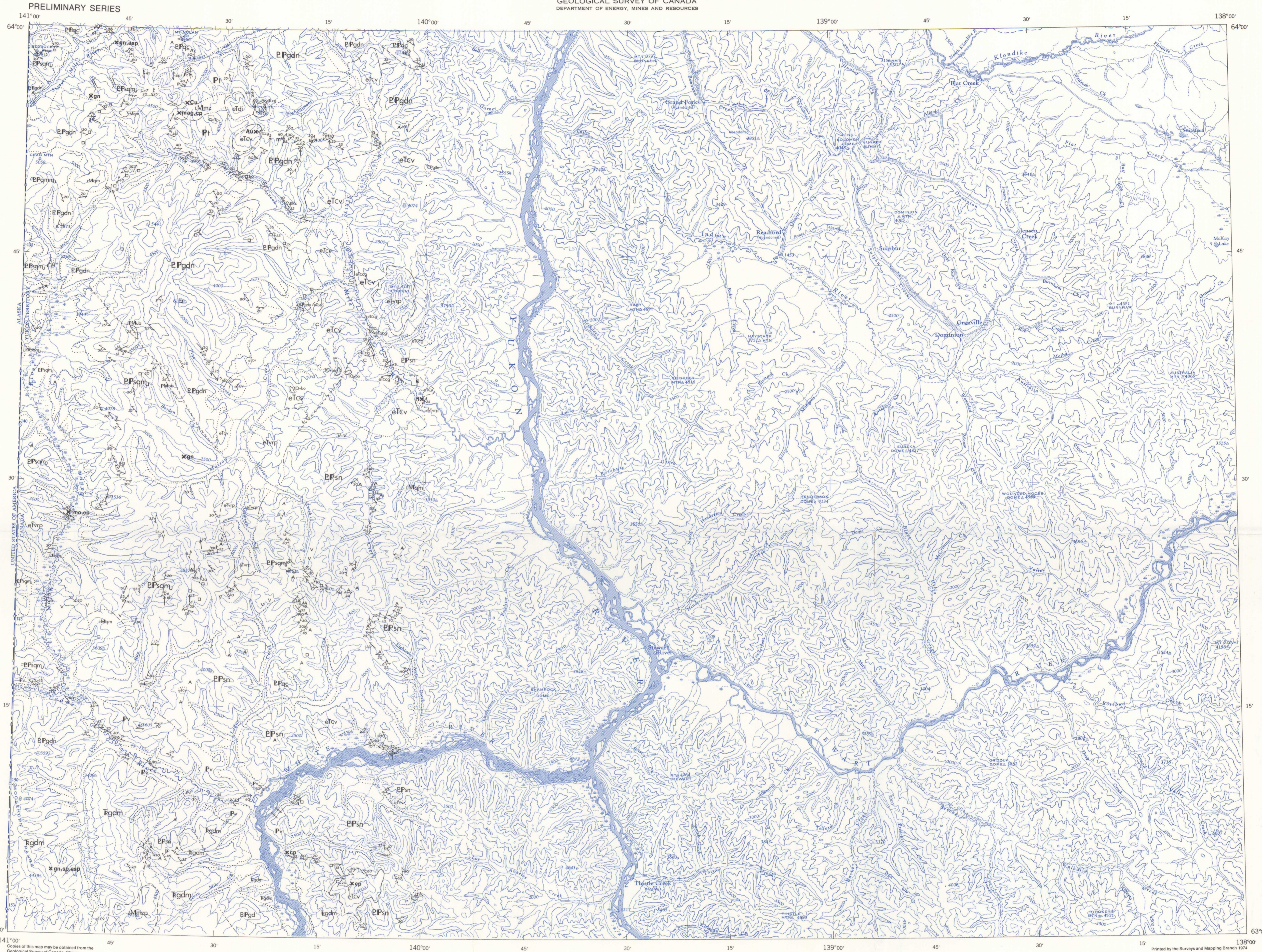
Any revisions or additional geological information known to the user would be welcomed by the Geological Survey of Canada

Base-map at the same scale published by the Surveys and Mapping Branch, Department of Energy, Mines and Resources in 1963

Copies of the topographical edition of this map may be obtained from the Canada Map Office, Department of Energy, Mines and Resources, Ottawa

Magnetic declination 1973 varies from 30°30' easterly at centre of west edge to 31°59' easterly at centre of east edge. Mean annual change 3.8' westerly

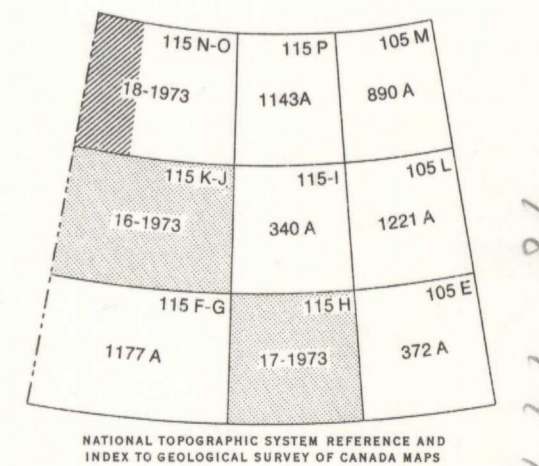
Elevations in feet above mean sea-level



MAP LIBRARY / CARTOTHEQUE
 ESIC CIST
 OCT 8 1996

MAP 18-1973
 PAPER 73-41
 GEOLOGY
STEWART RIVER
 YUKON TERRITORY
 Scale 1:250,000
 Miles 4 0 4 8 12
 Kilometres 6 0 6 12 18
 Universal Transverse Mercator Projection
 © Crown Copyrights reserved

DEPT. OF ENERGY, MINES & RESOUR. C.S.
 JUL 16 1974
 DEPARTMENTAL MAP LIBRARY



Printed by the Surveys and Mapping Branch 1974
 MAP 18-1973
STEWART RIVER
 YUKON TERRITORY

612 09 55C

18-1973
 C.2