

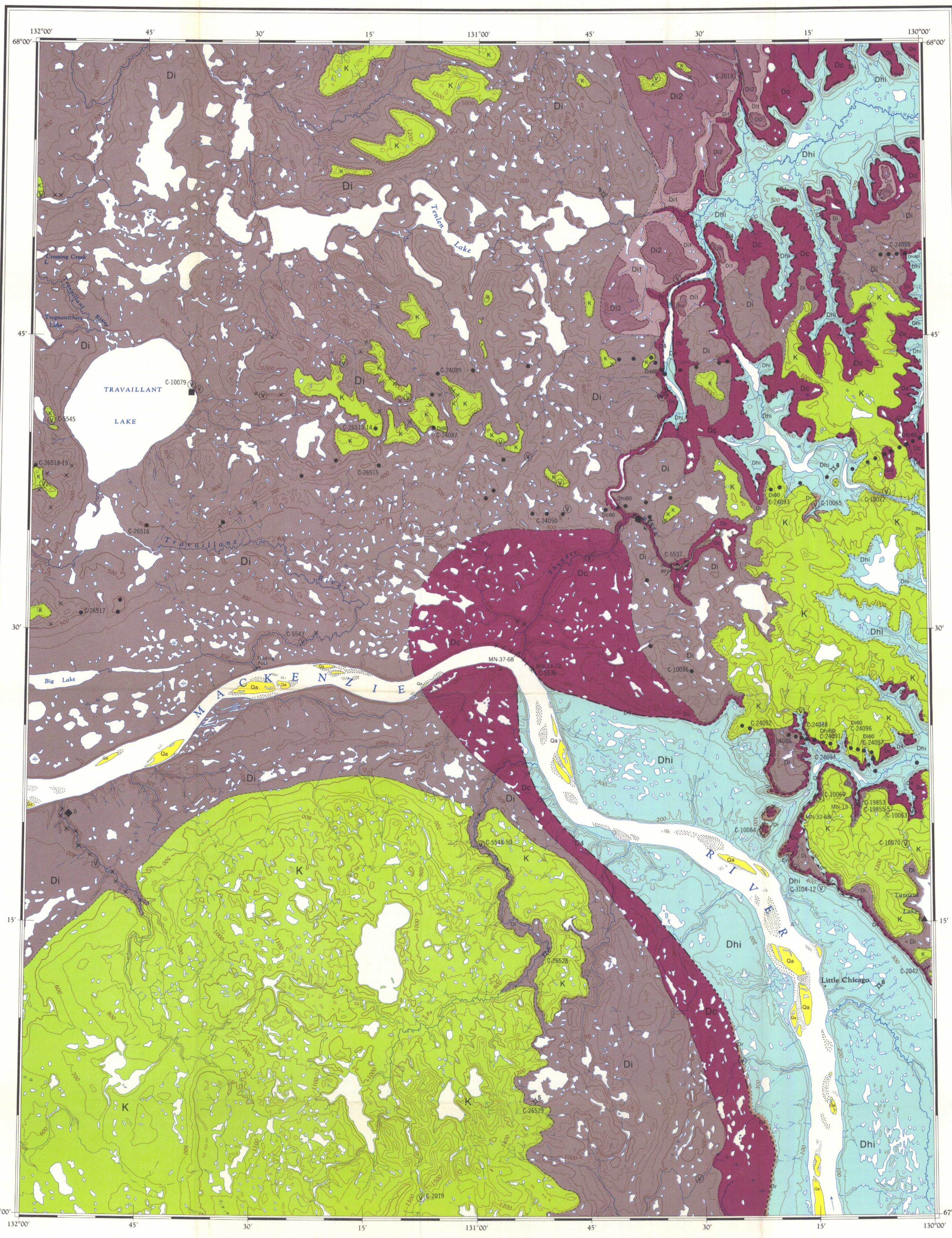


GEOLOGICAL SURVEY OF CANADA
DEPARTMENT OF ENERGY, MINES AND RESOURCES

LEGEND

Note: Legend blocks apply to Maps 1408A, 1409A, and 1410A.
Coloured legend blocks indicate map-units that appear on this map

- CENOZOIC**
- QUATERNARY**
 - Qa Alluvium, largely sand
- MESOZOIC**
- CRETACEOUS**
 - LOWER CRETACEOUS**
 - K Cretaceous undivided: sandstone, white, fine- to coarse-grained, commonly basal; sand, brown, fine, and clay, dark grey, partly carbonaceous, interlaminated; shale, partly silty, brown or grey, with ironstone concretions; siltstone, brown, calcareous; siltstone, white, and shale, dark grey, interbedded; sandstone, brown, laminated, partly fossiliferous
- DEVONIAN**
- UPPER DEVONIAN**
 - D12 IMPERIAL FORMATION: shale, brown, greenish grey, generally fissile; subordinate sandstone, brown, impure, very fine grained; minor siltstone
 - D11 Basal unit: shale, dark brown to black, fissile, with siltstone laminae and clay ironstone concretions
 - Dc CANOL FORMATION: shale, black, mostly bituminous, partly fissile, partly siliceous and blocky
 - MIDDLE DEVONIAN**
 - D4 Unnamed unit (approximate, assumed): sandstone, brown, fine-grained, thin- to medium-bedded, partly shaly, partly calcareous, commonly fossiliferous
 - Dr RAMPARTS FORMATION: limestone, generally well bedded and partly argillaceous, rubby weathering, commonly fossiliferous; massive in Iroquois Syncline (see Map 1410A)
 - Dhi HARE INDIAN FORMATION: shale, black and fissile at base, greenish grey above; beds of siltstone and fossiliferous limestone locally developed especially near top
 - Dh HUME FORMATION: limestone, well bedded and rubby, highly fossiliferous; shales in middle and lower parts



- Rock outcrop
- Rock outcrop visited
- Geological boundary (approximate, assumed)
- Geological boundary (extended beneath thick overburden)
- Unnamed unit D4 (extended beneath thick overburden)
- Bedding, tops known (inclined, overturned)
- Thrust fault (defined, assumed; teeth in hanging wall)
- Anticline (defined)
- Fossil locality (G.S.C. catalogue number)
- Stratigraphic section studied by W. S. Mackenzie with section number
- Shallow borehole samples examined (surface map-unit, deeper map-unit with formation and depth in feet indicated)
- Gas seep (observed, reported)
- Oil seep or stain (reported)
- Abandoned well

Geology compiled by D. G. Cook and J. D. Aitken, 1974. Compilation based on field work by D. G. Cook, J. D. Aitken, M. E. Ayling, H. R. Balkwill, W. S. Mackenzie and C. J. Yorath (1968, 1971), published maps and reports, and unpublished reports on file with the Department of Indian Affairs and Northern Development

To accompany G.S.C. Paper 74-17 by D. G. Cook and J. D. Aitken

ABANDONED WELLS

- Richfield Oil Co. et al. Grandview Hills No. 1
- Atlantic Little Chicago N-32
- Richfield Oil Co. et al. Grandview Hills Corehole No. 1
- INC NCO Mobil Sun Thunder River D-69
- Central Del Rio Tenlen A-73

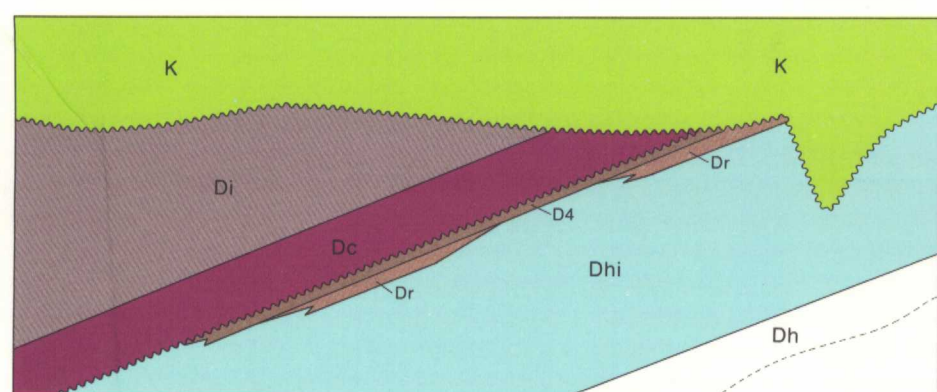
SHALLOW BOREHOLE SAMPLES

Chevron Standard Ltd. - seismic shot points
Department of Public Works - test holes

REPORTED OIL OR GAS SEEPS

- DIAND Report No. 19-1-6-1
- DIAND Report Nos. 530-1-6-8 and 530-1-6-1

SCHEMATIC STRATIGRAPHIC RELATIONSHIPS



Geological cartography by B.H. Ortman, Institute of Sedimentary and Petroleum Geology, Geological Survey of Canada

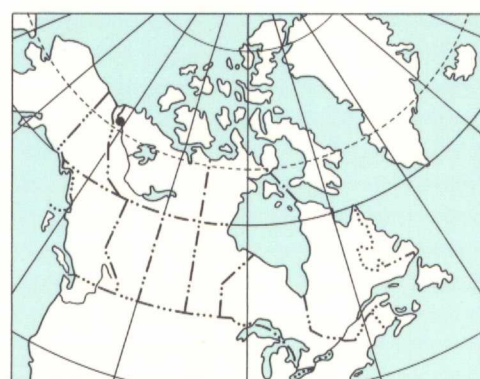
Any revisions or additional geological information known to the user would be welcomed by the Geological Survey of Canada

Base-map at the same scale published by the Surveys and Mapping Branch in 1959

Copies of the topographical edition of this map may be obtained from the Canada Map Office, 615 Booth Street, Ottawa, Ontario K1A 0E9

Magnetic declination 1975 varies from 38°33.1' easterly at centre of west edge to 39°13.1' easterly at centre of east edge. Mean annual change 6.6' westerly

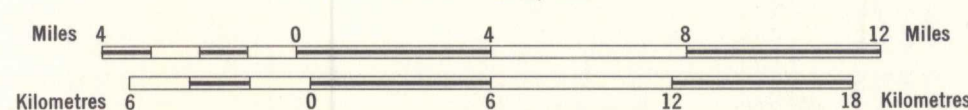
Elevations in feet above mean sea level



INDEX MAP

TRAVILLANT LAKE DISTRICT OF MACKENZIE

Scale 1:250,000

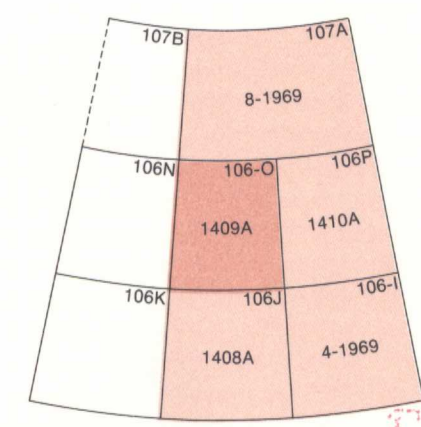


Transverse Mercator Projection
© Crown Copyrights reserved

MAP LIBRARY / BIBLIOTHÈQUE
OCT 23 1988
GEOLOGICAL SURVEY
COMMISSION GÉOLOGIQUE

MAP LIBRARY / CARTOTHEQUE

NOT TO BE TAKEN FROM LIBRARY
NE PAS SORTIR DE LA BIBLIOTHÈQUE



NATIONAL TOPOGRAPHIC SYSTEM REFERENCE AND INDEX TO ADJOINING GEOLOGICAL SURVEY OF CANADA MAPS

MAP 1409A
TRAVILLANT LAKE
DISTRICT OF MACKENZIE

1409A

