

LEGEND

Note: Legend blocks apply to Maps 1408A, 1409A, and 1410A.
Coloured legend blocks indicate map-units that appear on this map

- CENOZOIC**
- QUATERNARY**
- Qa Alluvium, largely sand
- MESOZOIC**
- CRETACEOUS**
- LOWER CRETACEOUS**
- K Cretaceous undivided: sandstone, white, fine- to coarse-grained, commonly basal; sand, brown, fine, and clay, dark grey, partly carbonaceous, interlaminated; siltstone, white, and shale, dark grey, interbedded; sandstone, brown, laminated, partly fossiliferous
- DEVONIAN**
- UPPER DEVONIAN**
- Di2 IMPERIAL FORMATION: shale, brown, greenish grey, generally fissile; subordinate sandstone, brown, impure, very fine grained; minor siltstone
- Di1 Basal unit: shale, dark brown to black, fissile, with siltstone laminae and clay ironstone concretions
- Di IMPERIAL FORMATION (undivided)
- Dc CANOL FORMATION: shale, black, mostly bituminous, partly fissile, partly siliceous and blocky
- MIDDLE DEVONIAN**
- D4 Unnamed unit (approximate, assumed): sandstone, brown, fine-grained, thin- to medium-bedded, partly shaly, partly calcareous, commonly fossiliferous
- Dr RAMPARTS FORMATION: limestone, generally well bedded and partly argillaceous, rubly weathering, commonly fossiliferous; massive in Iroquois Syncline
- Dhi HARE INDIAN FORMATION: shale, black and fissile at base, greenish grey above; beds of siltstone and fossiliferous limestone locally developed especially near top
- Dh HUME FORMATION: limestone, well bedded and rubly, highly fossiliferous; shales in middle and lower parts

- Rock outcrop X
- Rock outcrop visited V
- Geological boundary (defined, approximate, assumed) - - - - -
- Geological boundary (extended beneath thick overburden) - - - - -
- Bedding, tops known (inclined) - - - - -
- Anticline (defined, assumed, arrow indicates plunge) - - - - -
- Syncline (defined, assumed, arrow indicates plunge) - - - - -
- Fossil locality (G.S.C. catalogue number) C-26534
- Stratigraphic section studied by W. S. Mackenzie with section number MN-34-68 H
- Shallow borehole samples examined (surface map-unit, deeper map-unit with formation and depth in feet indicated) Dh45
- Shallow borehole samples reported (surface map-unit, deeper map-unit with formation and approximate depth in feet indicated) Dh25
- Oil seep or stain (observed and reported) - - - - -
- Abandoned well 12 -

Geology compiled by D. G. Cook and J. D. Aitken, 1974. Compilation based on field work by D. G. Cook, J. D. Aitken, M. E. Ayling, H. R. Balkwill, W. S. Mackenzie and C. J. Yorath (1968, 1971), published maps and reports, and unpublished reports on file with the Department of Indian Affairs and Northern Development

To accompany G.S.C. Paper 74-17 by D. G. Cook and J. D. Aitken

ABANDONED WELLS

- Decalta et al. Rond Lake No. 1 10
- Decalta et al. Rond Lake No. 2 11
- Decalta et al. Rond Lake No. 5 12
- Decalta et al. Rond Lake No. 4 13
- Decalta et al. Rond Lake No. 3 14
- Mobil Inexco Sun Manuel Lake J-42 15
- Mobil Inexco Sun Iroquois D-40 16
- Candel Mobil et al. Iroquois I-11 17
- Canada Southern Carnwath River No. 1 18

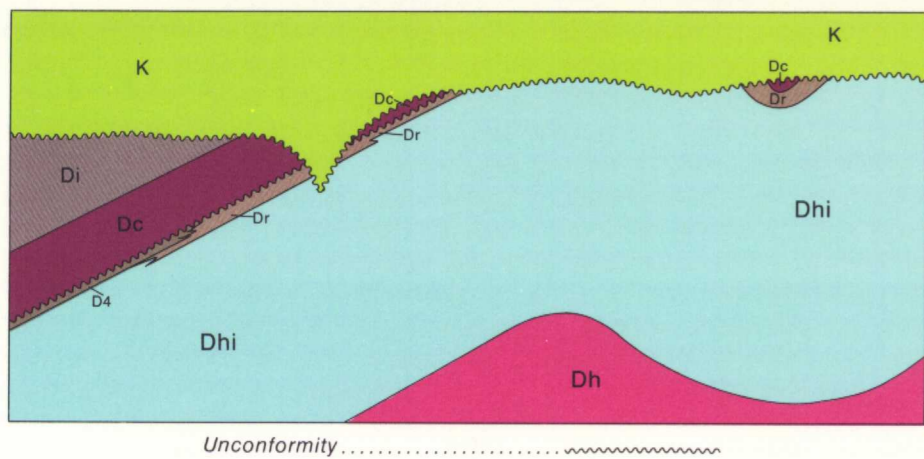
SHALLOW BOREHOLE SAMPLES

- Chevron Standard Ltd. - seismic shot points
- Sigma Explorations Ltd. - seismic shot points
- Canada Southern Petroleum Ltd. - seismic shot points (reported)

REPORTED OIL SEEPS

- DIAND Report Nos. 530-1-6-8, 19-1-6-1 Seep No. 6
- DIAND Report Nos. 542-1-6-2, 246-1-6-4, 530-1-6-1, 542-1-6-1 Seep No. 7

SCHEMATIC STRATIGRAPHIC RELATIONSHIPS



Geological cartography by D. J. Walter, Institute of Sedimentary and Petroleum Geology, Geological Survey of Canada

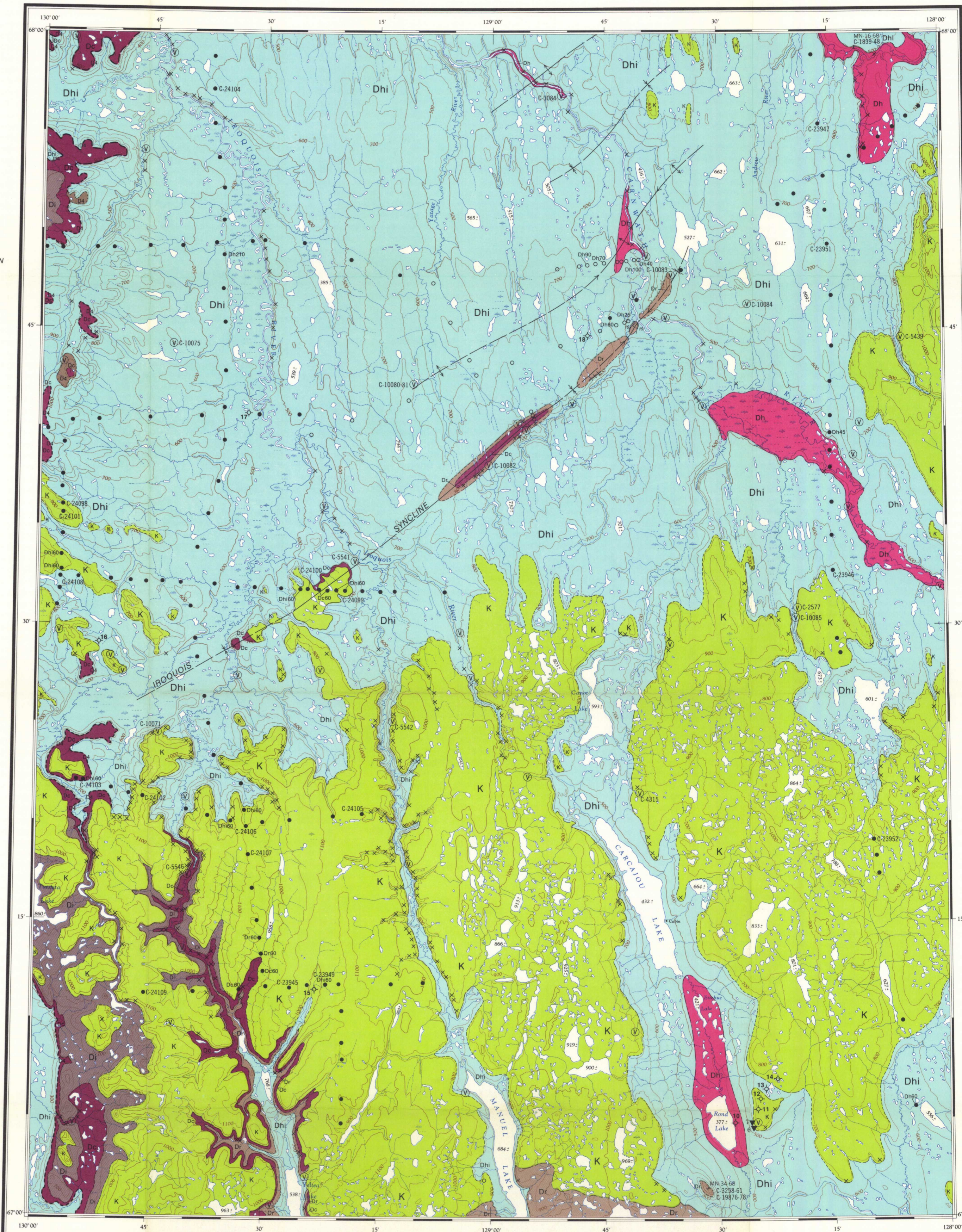
Any revisions or additional geological information known to the user would be welcomed by the Geological Survey of Canada

Base-map at the same scale published by the Army Survey Establishment R.C.E. 1957-61

Copies of the topographical edition of this map may be obtained from the Canada Map Office, 615 Booth Street, Ottawa, Ontario K1A 0E9

Magnetic declination 1975 varies from 39°13.1' easterly at centre of west edge to 39°58.5' easterly at centre of east edge. Mean annual change 6.95' westerly

Elevations in feet above mean sea-level



Copies of this map may be obtained from the Geological Survey of Canada: 601 Booth Street, Ottawa, Ontario K1A 0E8 3303 - 33rd Street N.W., Calgary, Alberta T2L 2A7

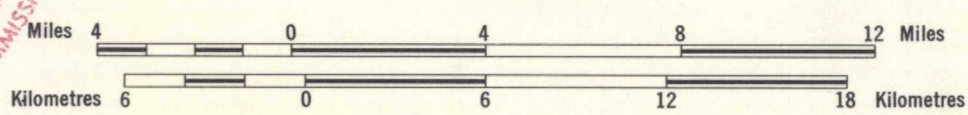


INDEX MAP

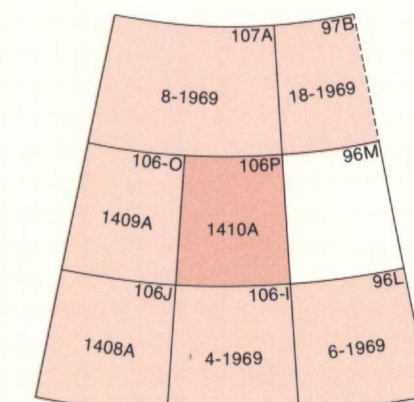
LIBRARY / BIBLIOTHÈQUE
047-21-1989
GEOLOGICAL SURVEY
COMMISSION G.S.C. / C.M.R.

MAP 1410A
PAPER 74-17
GEOLOGY
CANOT LAKE
DISTRICT OF MACKENZIE

Scale 1:250,000



Transverse Mercator Projection
© Crown Copyrights reserved



NATIONAL TOPOGRAPHIC SYSTEM REFERENCE AND INDEX TO ADJOINING GEOLOGICAL SURVEY OF CANADA MAPS

MAP 1410A
CANOT LAKE
DISTRICT OF MACKENZIE

1410A

MAP LIBRARY / CARTOTHEQUE

NOT TO BE TAKEN FROM LIBRARY
NE PAS SORTIR DE LA BIBLIOTHÈQUE