

Figure 10
Upper Paleozoic rocks near Nakina Lake, Southeastern
Atlin map-area, British Columbia

Scale 1:63,360
(1 inch to 1 mile)
Miles 1 0 1 2 3
Metres 1000 0 1000 2000 3000 4000 5000

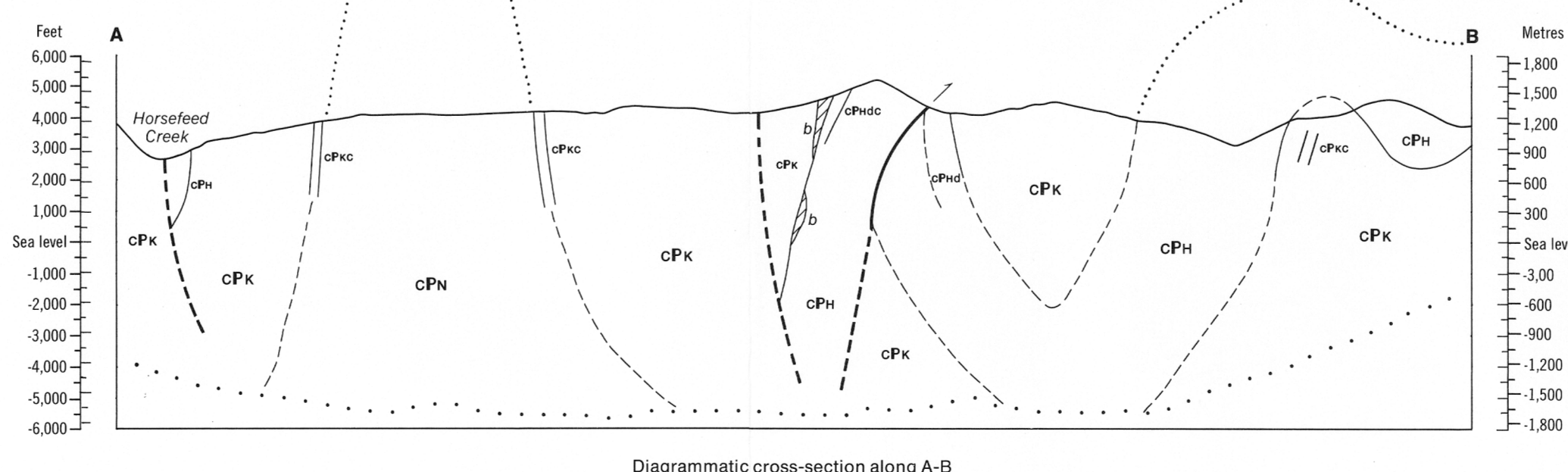
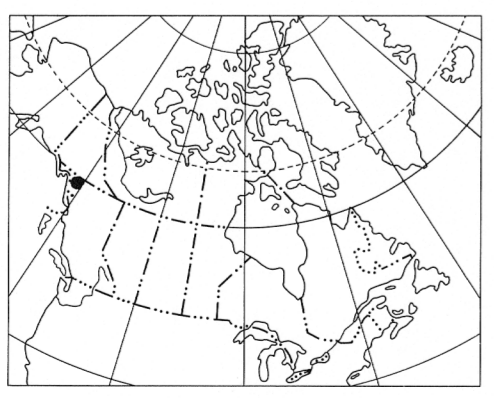
Geology by J.W. Monger

To accompany GSC Paper 74-47 by J.W. Monger

Geological cartography by the Geological Survey of Canada

Base-map cartography by the Geological Survey of Canada
from maps published by the Surveys and Mapping Branch, in 1971

Approximate magnetic declination 1974, 30°06.3' East decreasing 3.5' annually



Diagrammatic cross-section along A-B

LEGEND

- Q Drift
- TRIASSIC (?)
- T Laminated argillite and siltstone
- UPPER PALEOZOIC AND (?) LOWEST TRIASSIC MISSISSIPPIAN TO PERMIAN
- CACHE CREEK GROUP
- HORSEFEED FORMATION: limestone, dolomitic limestone; cPH algalaminar, aphanitic dolomitic limestone; cPwb metabasalt, tuff
- MISSISSIPPIAN TO PERMIAN OR (?) LOWEST TRIASSIC
- KEDAHDA FORMATION: bedded chert, cherty argillite and minor graywacke; cPK carbonate; cPwb basalt; cZb carbonate breccia at base of upper part of Kedahda Formation
- MISSISSIPPIAN AND (?) PENNSYLVANIAN
- cPN NAKINA FORMATION: metabasalt
- unknown age (possibly related to Nakina Formation)
- cPub Peridotite, serpentinized peridotite, in part belonging to the Nahlin ultramafic body; cPuba amphibolite

Geological boundary (defined, approximate, assumed)
 Boundary of Horsefeed Formation outside area mapped in detail
 Limit of geological mapping
 Bedding (inclined, vertical)
 Fault (defined, assumed; solid circle indicates downthrow side)
 Thrust fault (defined, assumed; teeth on upper plate)
 Chemical analysis (numbers 1 to 5 refer to Table 1 in text) X

FOSSIL LOCALITIES

- Late Permian (~ Guadalupian) O
- Late Early Permian (~ Leonardian) □
- Early Early Permian (~ Wolfcampian) △
- Late Pennsylvanian (~ Virgilian) ●
- Middle Pennsylvanian (~ Desmoinesian, Atokan) ○
- Late Mississippian (~ Chesterian) ▲
- Late Early Mississippian (~ Meramecian and older) ◆
- Fossils in clast in breccia ○

Numbers (1 to 30) refer to fusulinid identifications in Appendix 1, Table 2
 Letters (A to J) refer to small foraminifera and coral identifications in Appendix 1, Table 2