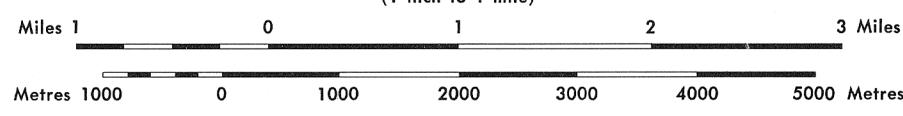




GEOLOGICAL SURVEY OF CANADA
DEPARTMENT OF ENERGY, MINES AND RESOURCES

Figure 16
Upper Paleozoic rocks near Sentinel Mountain
west central Atlin map-area, British Columbia

Scale 1:63,360
(1 inch to 1 mile)



LEGEND

QUATERNARY

Q Glacial deposits and alluvium; includes areas of little or no outcrop

MESOZOIC

Mg Granitic rocks

MESOZOIC (?)

TJvs Sandstone, conglomerate

UPPER PALEOZOIC AND (?) LOWER TRIASSIC

CACHE CREEK GROUP

cPH HORSEFEED FORMATION: limestone, minor dolomitic limestone

cPK KEDAHDA FORMATION: cPk bedded chert, cherty pelite, minor pelite and tuff; cPkS volcanic sandstone; cPkc limestone; cPkvb basic volcanic rock

cPN NAKINA FORMATION: cPn basalt, flow breccia; cPnd diabase; cPnt lithic tuff

UNKNOWN AGE, PROBABLY RELATED TO NAKINA FORMATION
(Atlin Intrusions of Aitken, 1959)

cPub Serpentinite, serpentinized peridotite and dunite

- Geological boundary (defined, approximate, assumed)
- Limit of geological mapping
- Bedding (inclined, vertical)
- Tops determined from pillow lavas, differentiated diabase sills
- Fault (assumed; solid circle indicates downthrow side)
- Chemical analysis (numbers 1 to 8 refer to analysis in Table 1 in text)

FOSSIL LOCALITIES

- Late Permian (Guadalupian)
 - Late Early Permian (~Leonardian)
 - Early Early Permian (~Wolfcampian)
 - Late Pennsylvanian
 - Middle Pennsylvanian
 - Late Mississippian
 - Early Mississippian
- (numbers refer to identifications in Appendix 1, Table 3)

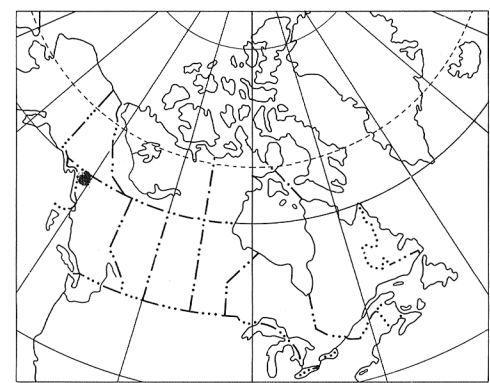
Geology by J.W. Monger

To accompany GSC Paper 74-47 by J.W. Monger

Geological cartography by the Geological Survey of Canada

Base-map cartography by the Geological Survey of Canada from maps published by the Surveys and Mapping Branch, in 1971

Approximate magnetic declination 1974, 30°12.8' East, decreasing 3.6' annually



INDEX MAP

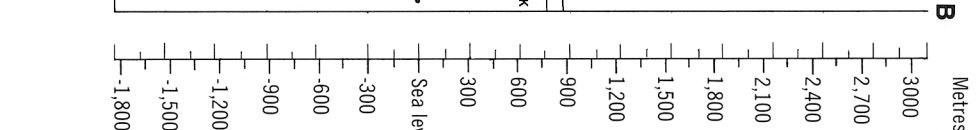
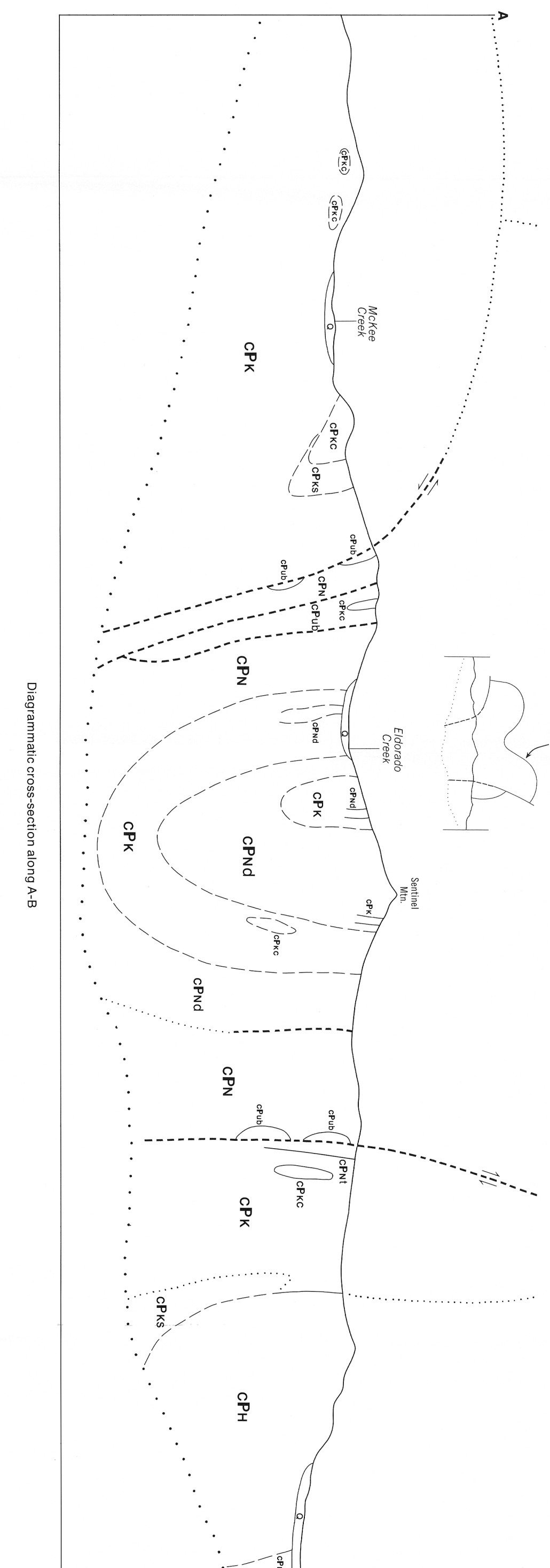
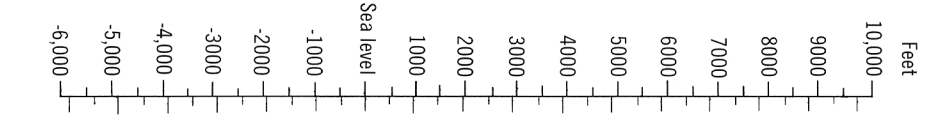
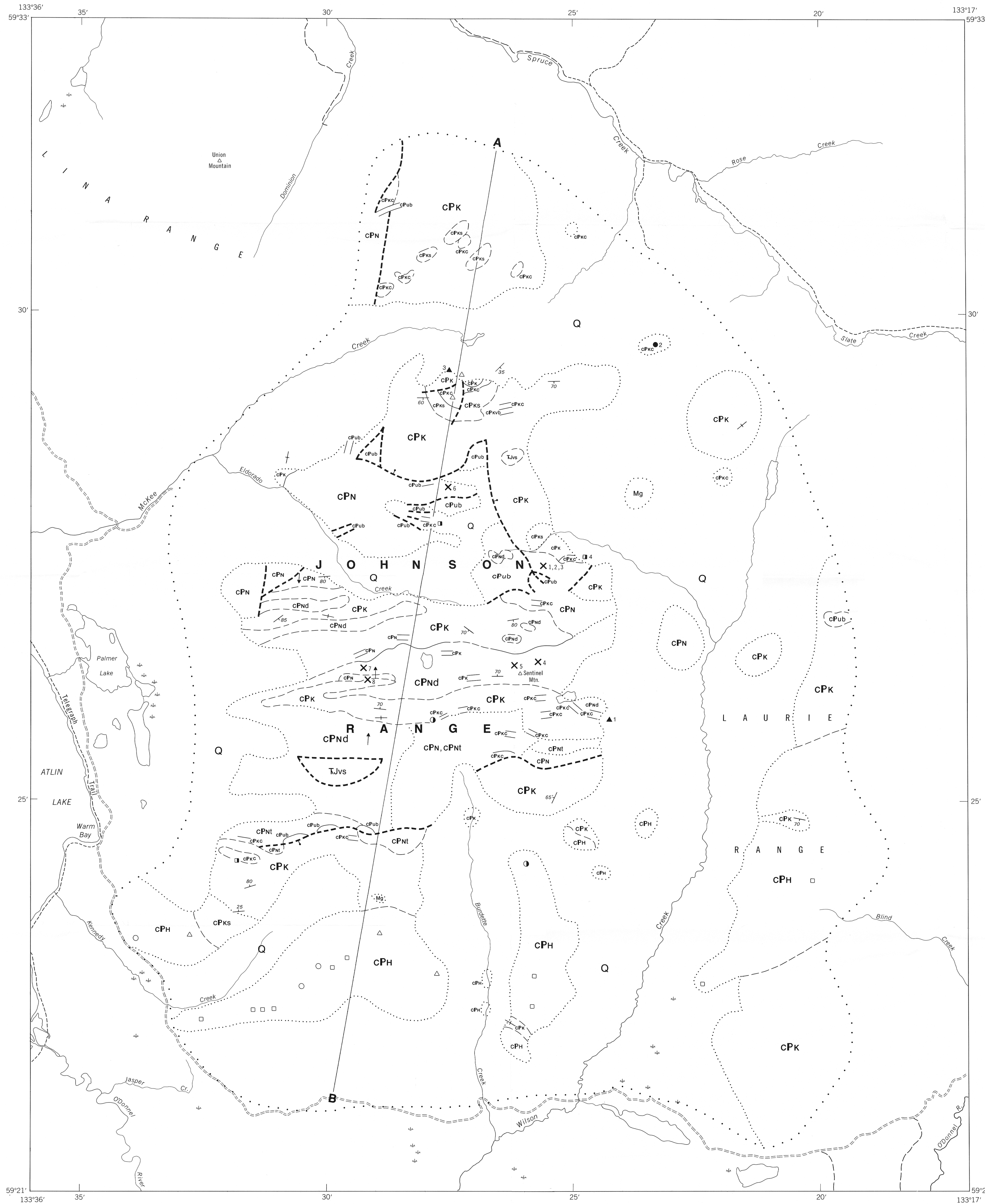


Figure 16

This document was produced by scanning the original publication. Ce document est le produit d'une numérisation par balayage de la publication originale.