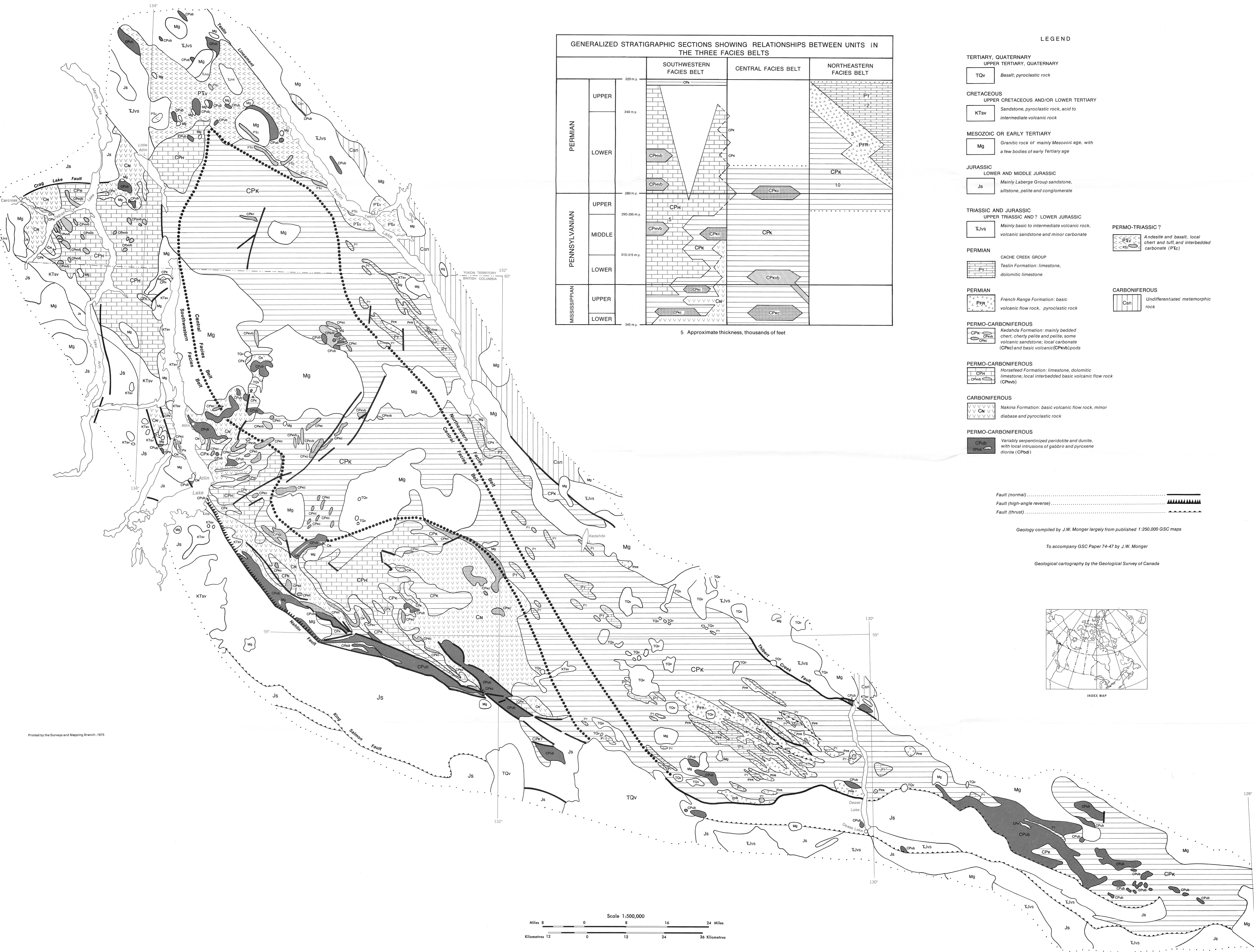




GEOLOGICAL SURVEY OF CANADA
DEPARTMENT OF ENERGY, MINES AND RESOURCES



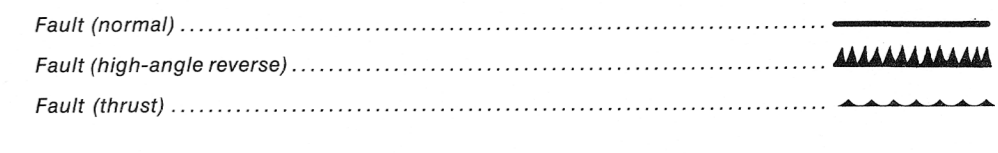
GENERALIZED STRATIGRAPHIC SECTIONS SHOWING RELATIONSHIPS BETWEEN UNITS IN THE THREE FACIES BELTS

		225 m.y.			240 m.y.			280 m.y.			290-295 m.y.			310-315 m.y.			345 m.y.		
		SOUTHWESTERN FACIES BELT			CENTRAL FACIES BELT			NORTHEASTERN FACIES BELT			SOUTHWESTERN FACIES BELT			CENTRAL FACIES BELT			NORTHEASTERN FACIES BELT		
PERMIAN	UPPER	CPK			CPK			PT			CPK			PT			PT		
	LOWER	CPHvb			CPK			CPK			CPK			PFR			CPK		
PENNSYLVANIAN	UPPER	CPH			CPK			CPK			CPK			CPK			CPK		
	MIDDLE	CPHvb			CPK			CPK			CPK			CPK			CPK		
	LOWER	CPHvb			CPKvb			CPKvb			CPKvb			CPKvb			CPKvb		
MISSISSIPPIAN	UPPER	CPK			CPK			CPK			CPK			CPK			CPK		
	LOWER	CPK			CPK			CPK			CPK			CPK			CPK		

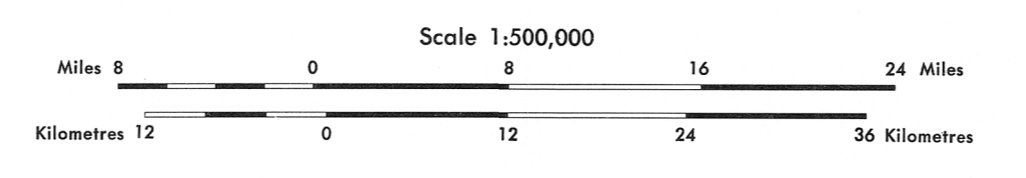
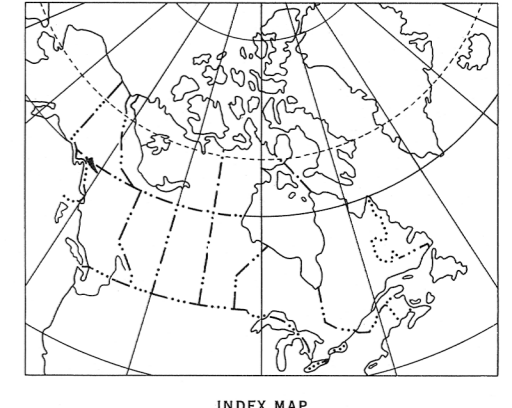
5 Approximate thickness, thousands of feet

LEGEND

- TERTIARY, QUATERNARY**
- UPPER TERTIARY, QUATERNARY
- TQv Basalt, pyroclastic rock
- CRETACEOUS**
- UPPER CRETACEOUS AND/OR LOWER TERTIARY
- KTsv Sandstone, pyroclastic rock, acid to intermediate volcanic rock
- MESOZOIC OR EARLY TERTIARY**
- Mg Granitic rock of mainly Mesozoic age, with a few bodies of early Tertiary age
- JURASSIC**
- LOWER AND MIDDLE JURASSIC
- Js Mainly Laberge Group sandstone, siltstone, pelite and conglomerate
- TRIASSIC AND JURASSIC**
- UPPER TRIASSIC AND ? LOWER JURASSIC
- Tjvs Mainly basic to intermediate volcanic rock, volcanic sandstone and minor carbonate
- PERMIAN**
- CACHE CREEK GROUP
- PT Teslin Formation: limestone, dolomitic limestone
- PERMIAN**
- PFR French Range Formation: basic volcanic flow rock, pyroclastic rock
- PERMO-CARBONIFEROUS**
- CPK Kedahda Formation: mainly bedded chert, cherty pelite and pelite; some volcanic sandstone; local carbonate (CPKc) and basic volcanic (CPKvb) pods
- PERMO-CARBONIFEROUS**
- CPH Horsehead Formation: limestone, dolomitic limestone; local interbedded basic volcanic flow rock (CPHvb)
- CARBONIFEROUS**
- CN Nakina Formation: basic volcanic flow rock, minor diabase and pyroclastic rock
- PERMO-CARBONIFEROUS**
- Cpub Variably serpentinized peridotite and dunite, with local intrusions of gabbro and pyroxene diorite (CPbd)
- PERMO-TRIASSIC ?**
- PTc Andesite and basalt, local chert and tuff, and interbedded carbonate (PTc)
- CARBONIFEROUS**
- Csn Undifferentiated metamorphic rock



Geology compiled by J.W. Monger largely from published 1:250,000 GSC maps
To accompany GSC Paper 74-47 by J.W. Monger
Geological cartography by the Geological Survey of Canada



This document was produced by scanning the original publication.
Ce document est le produit d'une numérisation par balayage de la publication originale.

Figure 2. Generalized geology of the Atlin Terrane with location of facies belts and stratigraphic relationships between upper Paleozoic rock units, British Columbia and Yukon Territory

Figure 2