

LEGEND

- PLEISTOCENE AND RECENT**
- 12 Till, sand, gravel and derived soils, eluvium, alluvium
- CRETACEOUS**
- 11 Quartz-feldspar porphyry (age relative to 10 uncertain)
 - 10 Quartz monzonite, quartz diorite, granodiorite, granite
 - 9 Greenstone (altered diorite, gabbro, and diabase)
- LOWER CRETACEOUS (?)**
- 8 KENO HILL QUARTZITE: massive thick bedded quartzite, thin bedded quartzite, phyllite, graphitic schist, and minor limestone
- JURASSIC (?)**
- 7 LOWER SCHIST division: graphitic phyllite, phyllitic quartzite, thin bedded quartzite, graphitic schist, and minor limestone
- TRIASSIC**
- 6 Black-weathering, platy, black limy shale and limestone; thin bands of grey-to buff-weathering limestone
- ORDOVICIAN TO SILURIAN**
- 5 Dolomite, minor limestone
 - 4 Black shale and chert, dark grey quartzite
- PROTEROZOIC**
- 3 GRIT division: gritty quartzite, argillite, phyllite, minor limestone and chert
 - 2 Phyllitic quartzite, quartz-mica schist, graphitic schist, and grit
 - 1 UPPER SCHIST division: quartz-mica schist, thin bedded quartzite, phyllite, graphitic phyllite, and minor limestone
 - pCd Orange-weathering platy dolomite

- Sample locations used in this report (for metal contents of limonite precipitates and rocks see Table 9)
- Other sediment sample locations (stream, spring; see references in text)
- Geological boundary (defined, approximate, assumed)
- Fault (post-ore; defined, approximate, assumed)
- Thrust fault (assumed)
- Location of known mineralized faults
- Anticline (approximate, arrow indicates plunge)
- Syncline (approximate, arrow indicates plunge)
- Mineral occurrence
- Mineral deposit

- MINERAL SYMBOLS**
- Arsenic As
 - Silver Ag
 - Antimony Sb
 - Tungsten (fide) W
 - Copper Cu
 - Tungsten (placer) W(P)
 - Gold (fide) Au
 - Tin (fide) Sn
 - Gold (placer) Au(P)
 - Tin (placer) Sn(P)
 - Lead Pb
 - Zinc Zn
 - Molybdenum Mo

Compilation of geology by R.W. Boyle and C.F. Gleeson from reports and maps by Bostock (1943, 1947), Boyle (1965), Green (1971, 1972), Kinzie (1955, 1962), McTaggart (1950, 1960), and Poole (1965)

Geochemical field work by C.F. Gleeson, W.M. Tupper, A. Suparman, K. Dornai, M. Shatiquillah, J.A. Colwell, J.P. Dighton, C.H. Yurchak, J.K. Worth, R.R. James, A.G. Troup, G. Wind, L. Hogg, and F.R. Campbell

Analyses by Geological Section, Geological Survey of Canada: Cu, Pb, Zn, Ni, Co, As, Sb, Mo, and W; Bondar-Clegg & Co. Ltd., Ottawa; Ag, Sn, Ba, and F; Atomic Energy of Canada, Ltd., Ottawa; U

Compilation and text by C.F. Gleeson and R.W. Boyle

To accompany Paper 77-31 by C.F. Gleeson and R.W. Boyle

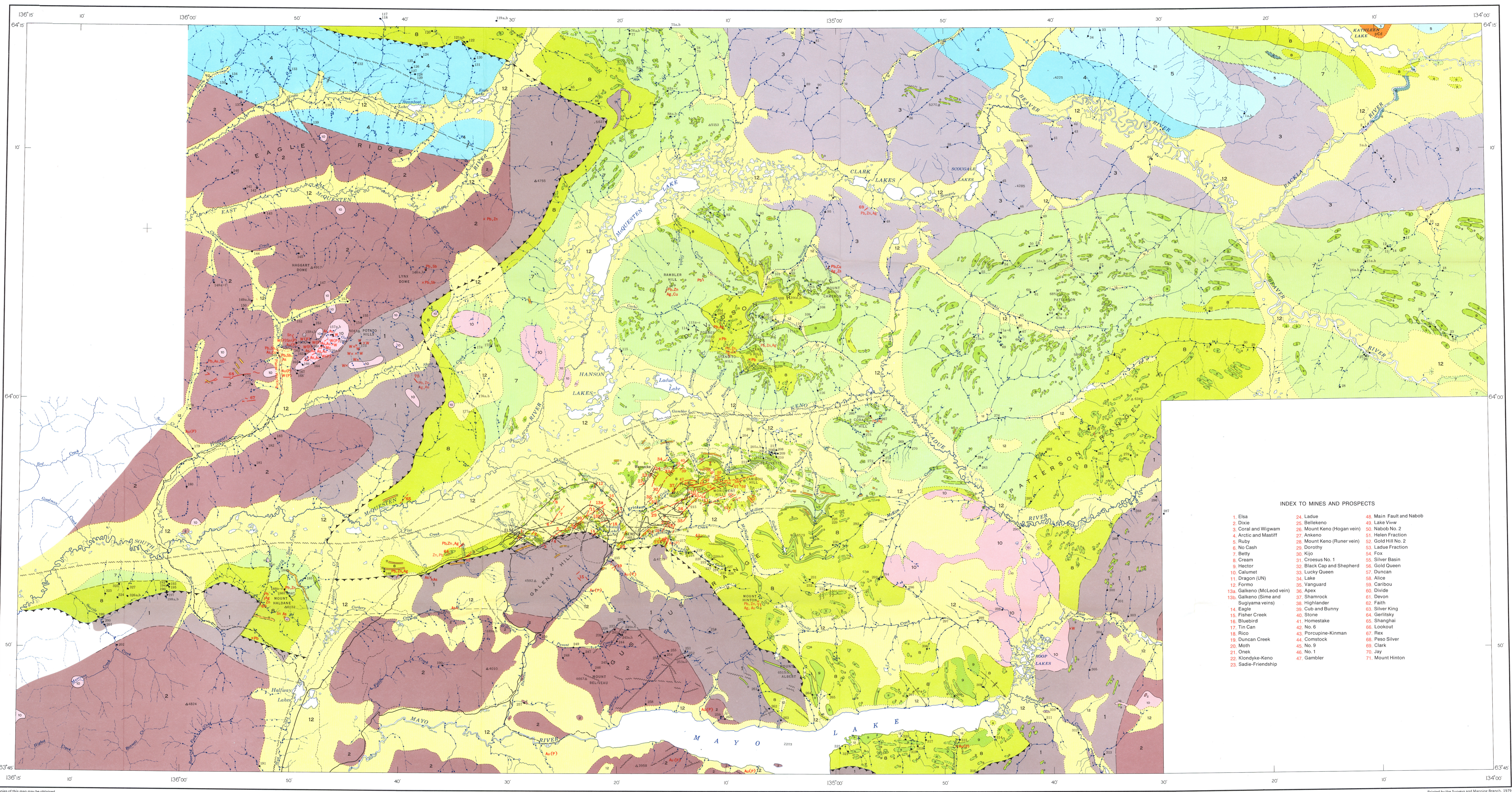
Geological cartography by R.S. Hill, Geological Survey of Canada

- Roads, all weather
- Other roads
- Trail
- Intermittent lake and stream
- Horizontal control point
- Elevation in feet above mean sea level

Base-map cartography by the Geological Survey of Canada, 1966 from maps published by the Surveys and Mapping Branch and by the Army Survey Establishment, R.C.E.

Approximate magnetic declination, 1978, 33°57' East decreasing 2.8' annually

This document was produced by scanning the original publication. Ce document est le produit d'une numérisation par balayage de la publication originale.



INDEX TO MINES AND PROSPECTS

- | | | |
|--|-----------------------------|--------------------------|
| 1. Elsa | 24. Ladue | 45. Main Fault and Nabob |
| 2. Dixie | 25. Bellekeno | 49. Lake View |
| 3. Coral and Wigwag | 26. Mount Keno (Hogan vein) | 50. Nabob No. 2 |
| 4. Arctic and Masfir | 27. Ankeno | 51. Helen Fraction |
| 5. Ruby | 28. Mount Keno (Runer vein) | 52. Gold Hill No. 2 |
| 6. No Cash | 29. Dorothy | 53. Ladue Fraction |
| 7. Betty | 30. Kijo | 54. Fox |
| 8. Cream | 31. Crossus No. 1 | 55. Silver Basin |
| 9. Hector | 32. Black Cap and Shepherd | 56. Gold Queen |
| 10. Calumet | 33. Lucky Queen | 57. Duncan |
| 11. Dragon (UN) | 34. Lake | 58. Alice |
| 12. Forno | 35. Vanguard | 59. Caribou |
| 13a. Galkeno (McLeod vein) | 36. Apex | 60. Divide |
| 13b. Galkeno (Sime and Sugiyama veins) | 37. Shamrock | 61. Devon |
| 14. Eagle | 38. Highlander | 62. Faith |
| 15. Fisher Creek | 39. Cub and Bunny | 63. Silver King |
| 16. Bluebird | 40. Stone | 64. Gerlitsky |
| 17. Tin Can | 41. Homestake | 65. Shanghai |
| 18. Rico | 42. No. 6 | 66. Lookout |
| 19. Duncan Creek | 43. Porcupine-Kinman | 67. Rex |
| 20. Moth | 44. Comstock | 68. Peso Silver |
| 21. Onek | 45. No. 9 | 69. Clark |
| 22. Kiondyke-Keno | 46. No. 1 | 70. Jay |
| 23. Sadie-Friendship | 47. Gambler | 71. Mount Hinton |

Figure 1. Sample locations and generalized geological map, Keno Hill district, Yukon Territory

