

Geological Survey of Canada

ROBERT BELL, D.Sc., (Canada) LL.D., MD., F.R.S., ACTING DIRECTOR.

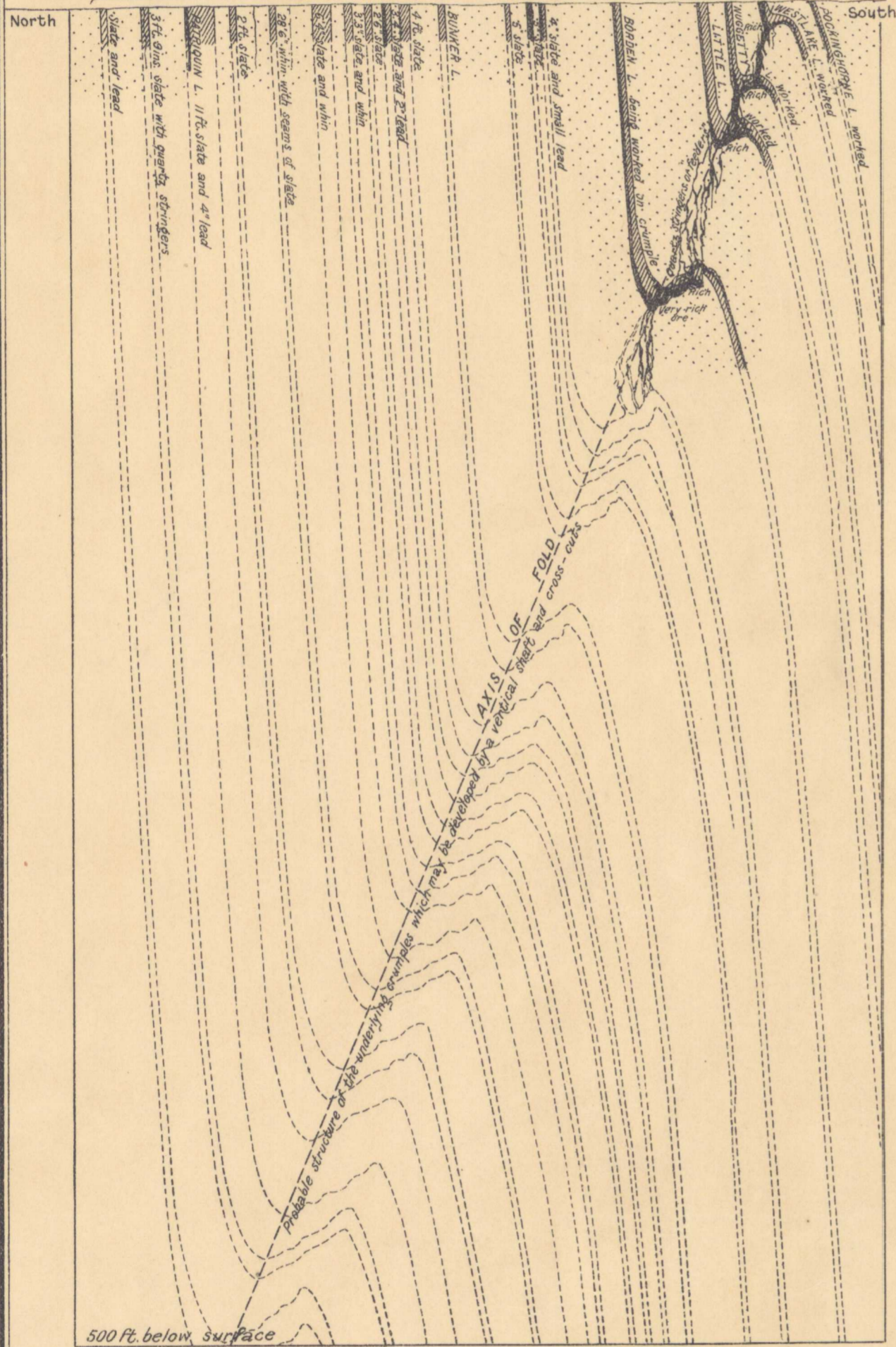
1904

GENERAL SECTION

This section shows the structure of a subordinate fold occurring 650 ft. south of the main anticlinal fold, and demonstrates that the four crumples of rich quartz operated were formed by the folding of the strata and that they are most probably succeeded by others as rich and as large.

Leads uncovered at surface showed no paying values but may prove very rich at the crumples.

Leads worked and found very rich on crumples pitching 10 to 15 degrees east.



TRANSVERSE SECTION

WEST LAKE MINE

MOUNT UNIACKE GOLD DISTRICT,

HANTS COUNTY, NOVA SCOTIA.

by

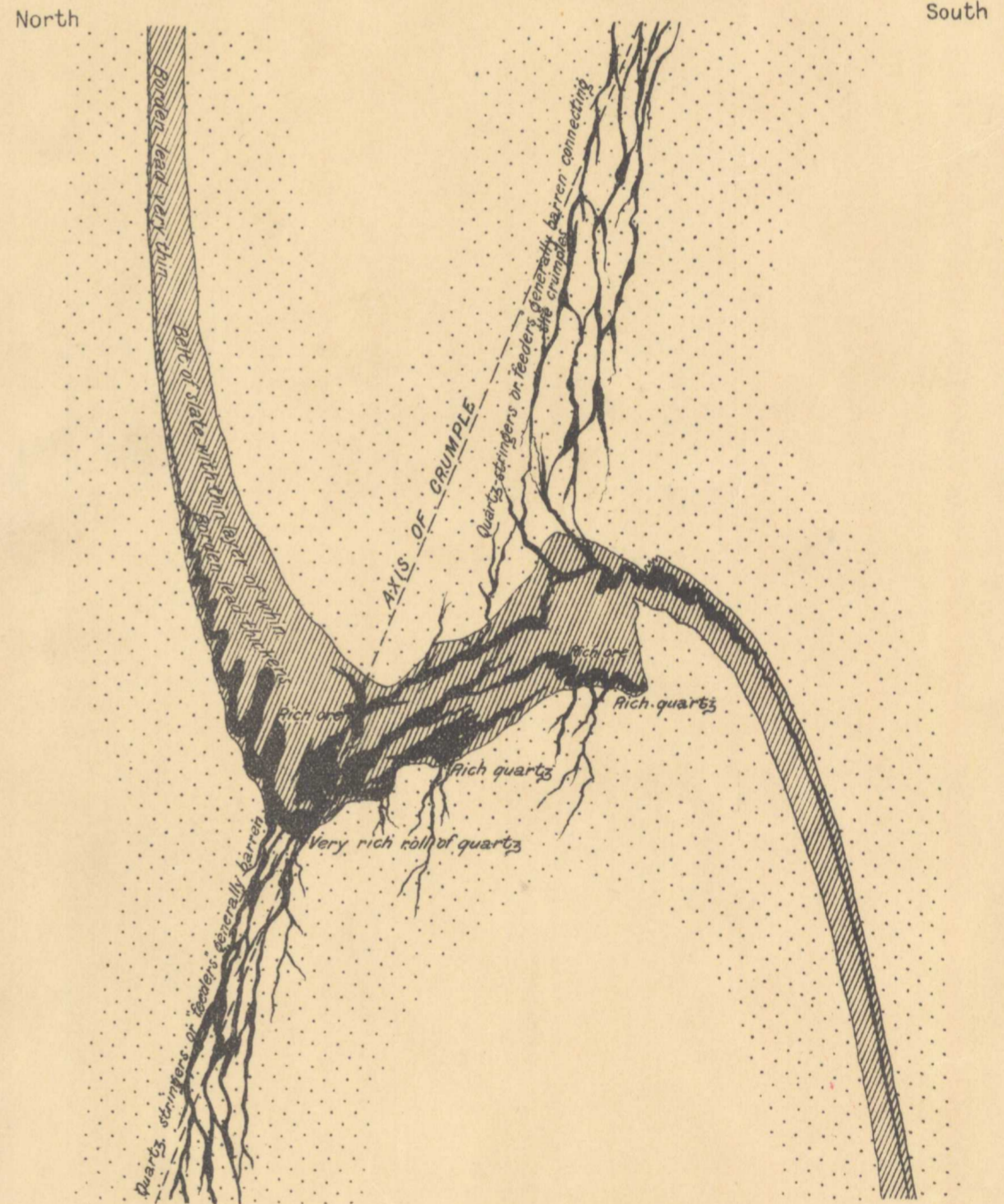
E. R. Faribault B.A. Sc.

Index.



DETAIL SECTION

Showing the structure of quartz crumple and "feeders" at east face of drift on Borden lead, from actual measurements and photographs, 10<sup>th</sup> Sept., 1903.



Drawn for photolithography by P. Frèreault.

To accompany Part AA, Vol. XV.

No. 849

N.S.  
Mt. Uniacke

51.699A  
A.P.-D

NOT TO BE TAKEN FROM LIBRARY  
NE PAS SORTIR DE LA BIBLIOTHÈQUE

1904