

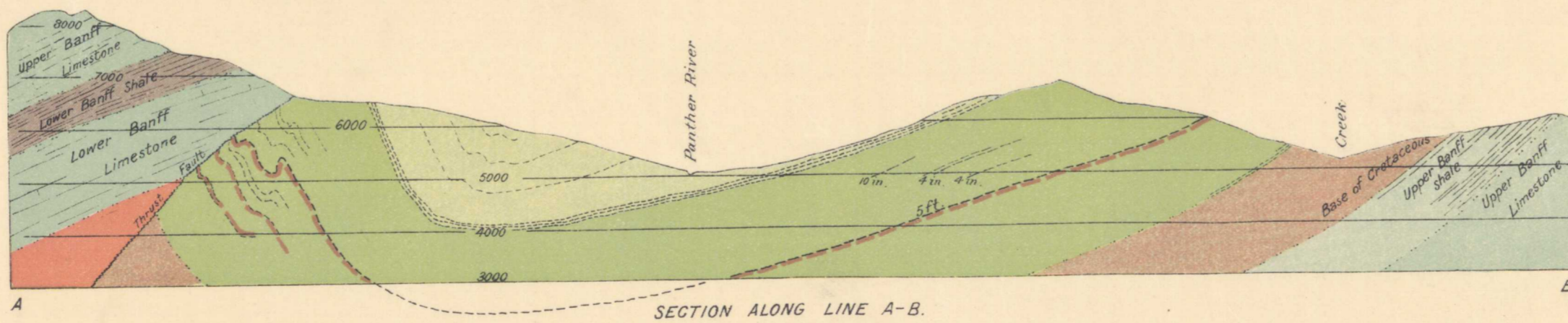
Explanation of Colours and Signs

- Cretaceous.
 - Sandstones and conglomerates.
 - Coal measures.
- Jurassic. ?
 - Black shales.
- Devono-Carboniferous.
 - Upper Banff shale.
 - Upper Banff limestone.
 - Lower Banff shale.
 - Lower Banff limestone.
- Devonian.
 - Intermediate limestone.
- Coal seams.
- 6600' Altitudes in feet above sea-level.
- Contour interval 100 feet.
- Broken contours approximate only.

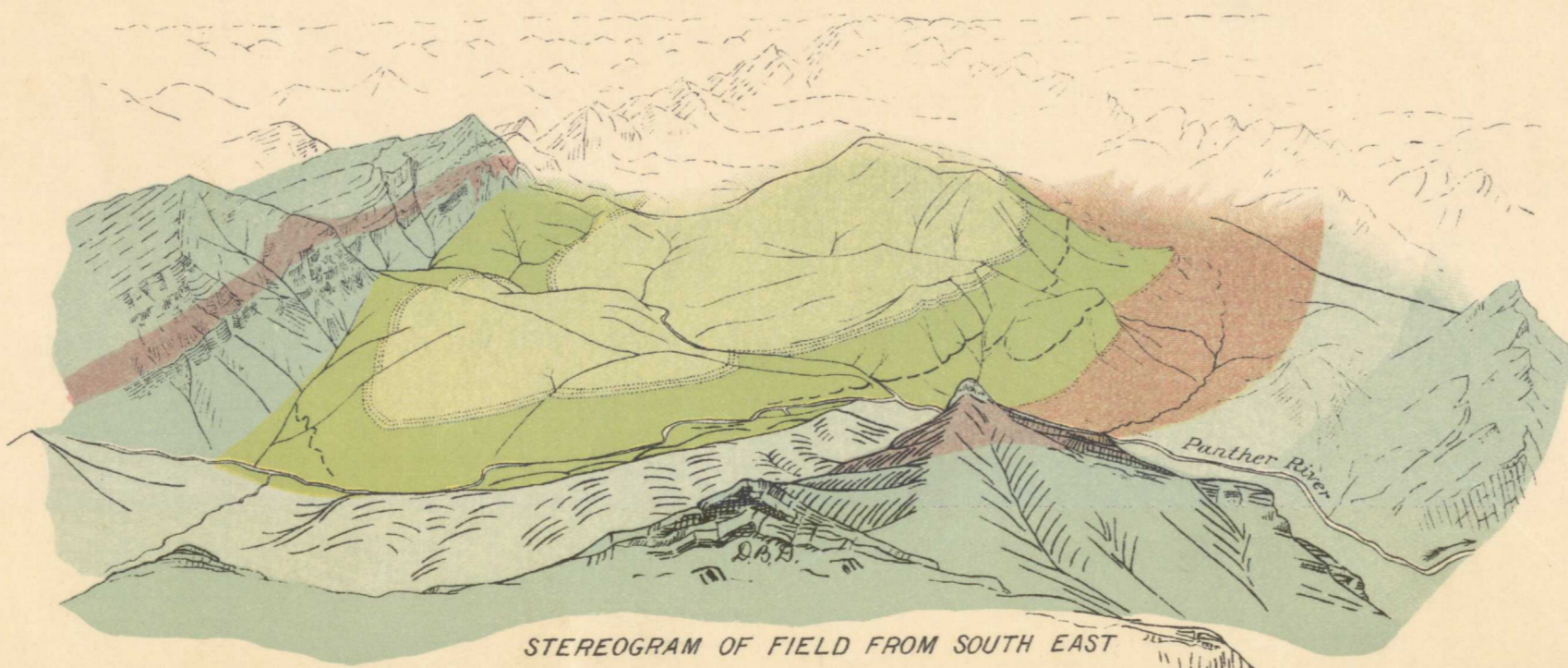
Drawn for photolithography by Paul Frèreault.

Note:—The geographical position of this sheet depends upon a transit-chain traverse from Cascade river to mouth of Panther river, by J.M. McLeitch, D.L.S., 1902. Mountain features from photographic survey by D.B. Dowling, 1904.

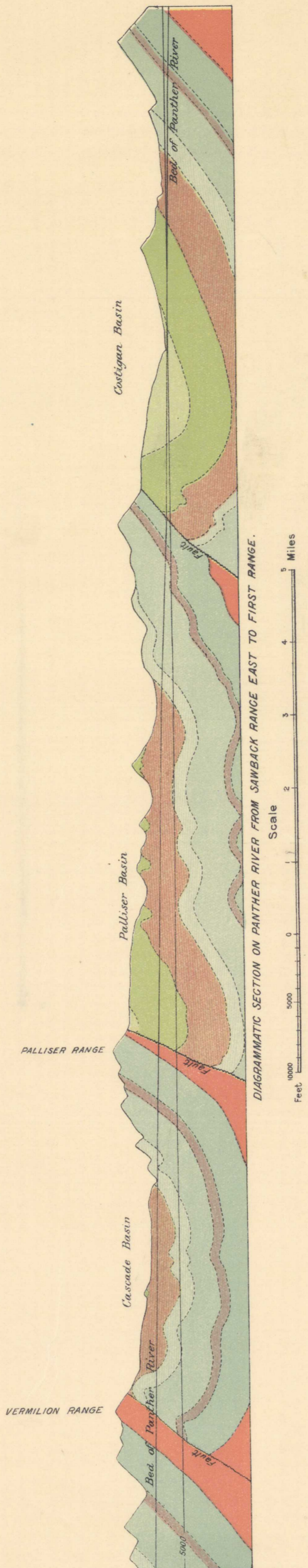
To accompany Part A, Vol. XVI, No. 892 Price 10 cts.



SECTION ALONG LINE A-B.



STEREOGRAM OF FIELD FROM SOUTH EAST



DIAGRAMMATIC SECTION ON PANTHER RIVER FROM SAMBACK RANGE EAST TO FIRST RANGE.

Scale
0 1 2 3 4 5 Miles
0 1000 2000 3000 4000 5000 Feet

NOT TO BE TAKEN FROM LIBRARY
NE PAS SORTIR DE LA BIBLIOTHÈQUE

Costigan
5.1.1
A, Geol.