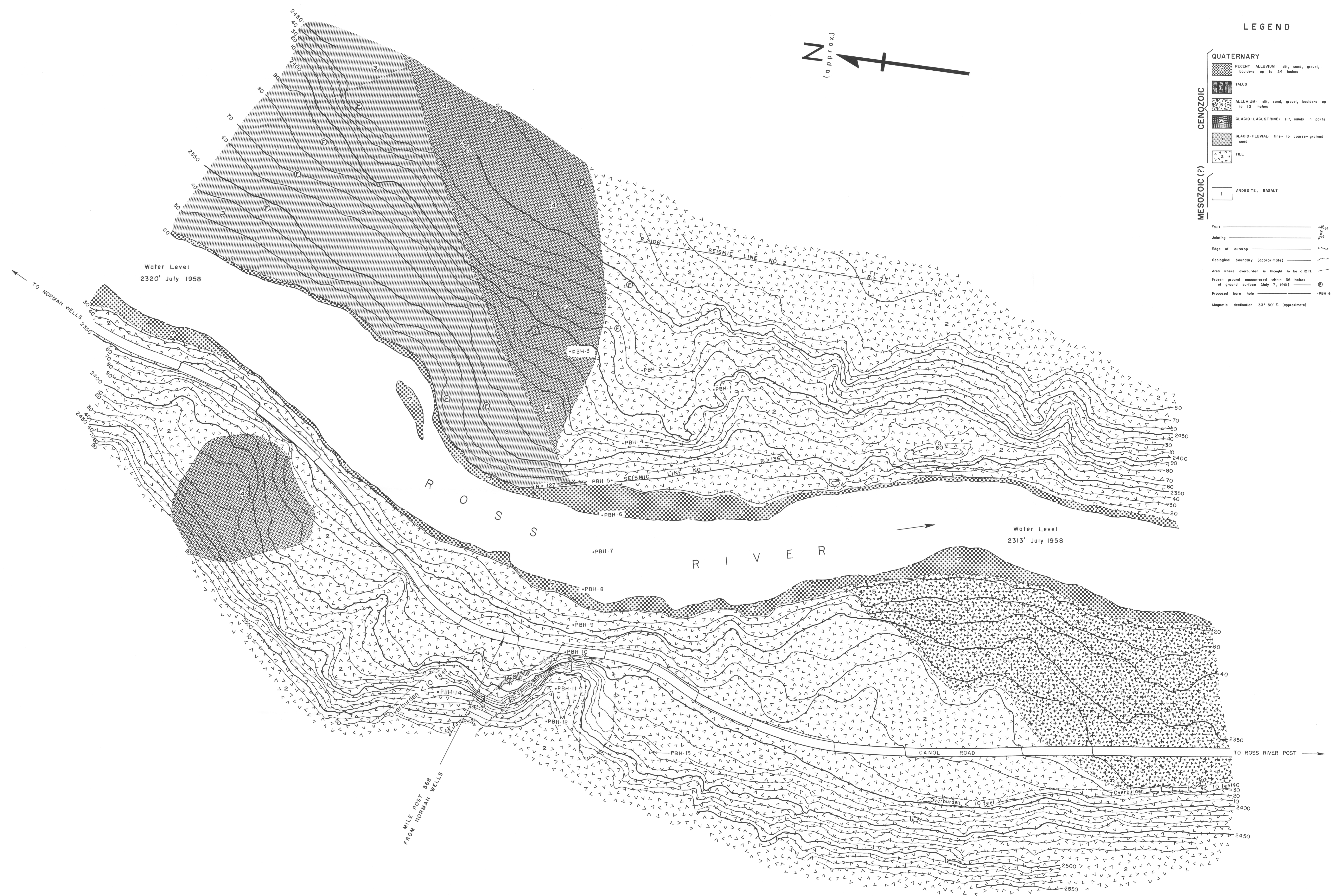


LEGEND

- QUATERNARY**
- RECENT ALLUVIUM: silt, sand, gravel, boulders up to 24 inches
  - TALUS
  - ALLUVIUM: silt, sand, gravel, boulders up to 12 inches
  - GLACIO-LACUSTRINE: silt, sandy in parts
  - GLACIO-FLUVIAL: fine- to coarse-grained sand
  - TILL
- MESOZOIC (?)**
- 1 ANDESITE, BASALT
- Fault Fault
- Jointing Jointing
- Edge of outcrop Edge of outcrop
- Geological boundary (approximate) Geological boundary (approximate)
- Area where overburden is thought to be < 10 ft. Frozen ground encountered within 36 inches of ground surface July 7, 1961 Frozen ground encountered within 36 inches of ground surface July 7, 1961
- Proposed bore hole Proposed bore hole
- Magnetic declination 35° 50' E. (approximate)



100 0 100 200 300  
SCALE IN FEET

YUKON RIVER DRAINAGE BASIN  
SITE NO. 28  
ROSS CANYON DAM SITE  
TO ACCOMPANY TOPICAL REPORT NO. 39  
GEOLOGY BY E. B. OWEN, 1961