



GEOLOGICAL SURVEY OF CANADA
DEPARTMENT OF MINES AND TECHNICAL SURVEYS

LEGEND

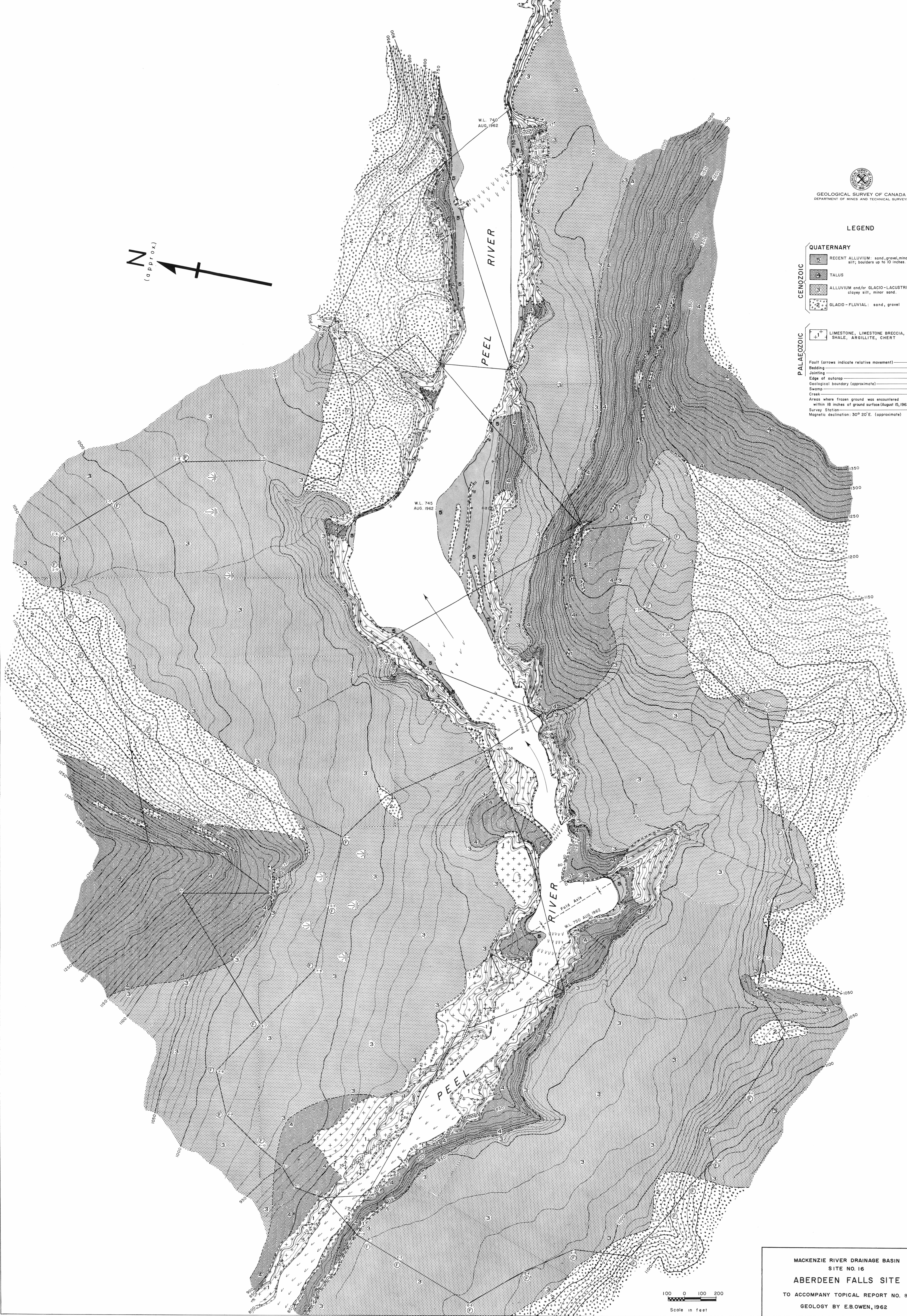
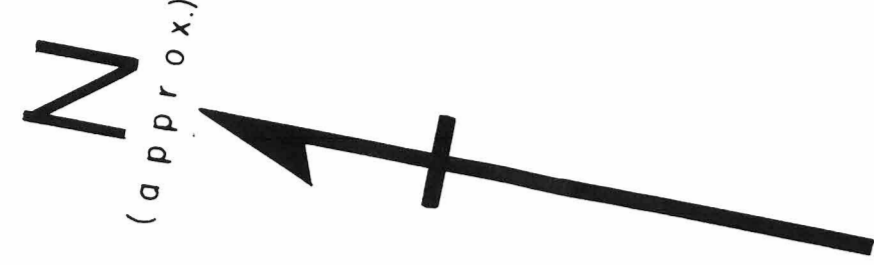
QUATERNARY

- 5 RECENT ALLUVIUM: sand, gravel, minor silt; boulders up to 10 inches
- 4 TALUS
- 3 ALLUVIUM and/or GLACIO-LACUSTRINE: clayey silt, minor sand
- 2 GLACIO-FLUVIAL: sand, gravel

CENOZOIC

- 1 LIMESTONE, LIMESTONE BRECCIA, SHALE, ARGILLITE, CHERT

- Fault (arrows indicate relative movement)
- Bedding
- Jointing
- Edge of outcrop
- Geological boundary (approximate)
- Swamp
- Creek
- Areas where frozen ground was encountered within 18 inches of ground surface (August 15, 1962)
- Survey Station
- Magnetic declination: 30° 20' E. (approximate)



MACKENZIE RIVER DRAINAGE BASIN
SITE NO. 16
ABERDEEN FALLS SITE
TO ACCOMPANY TOPICAL REPORT NO. 83
GEOLOGY BY E.B. OWEN, 1962