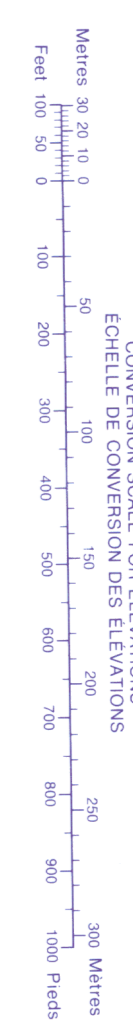
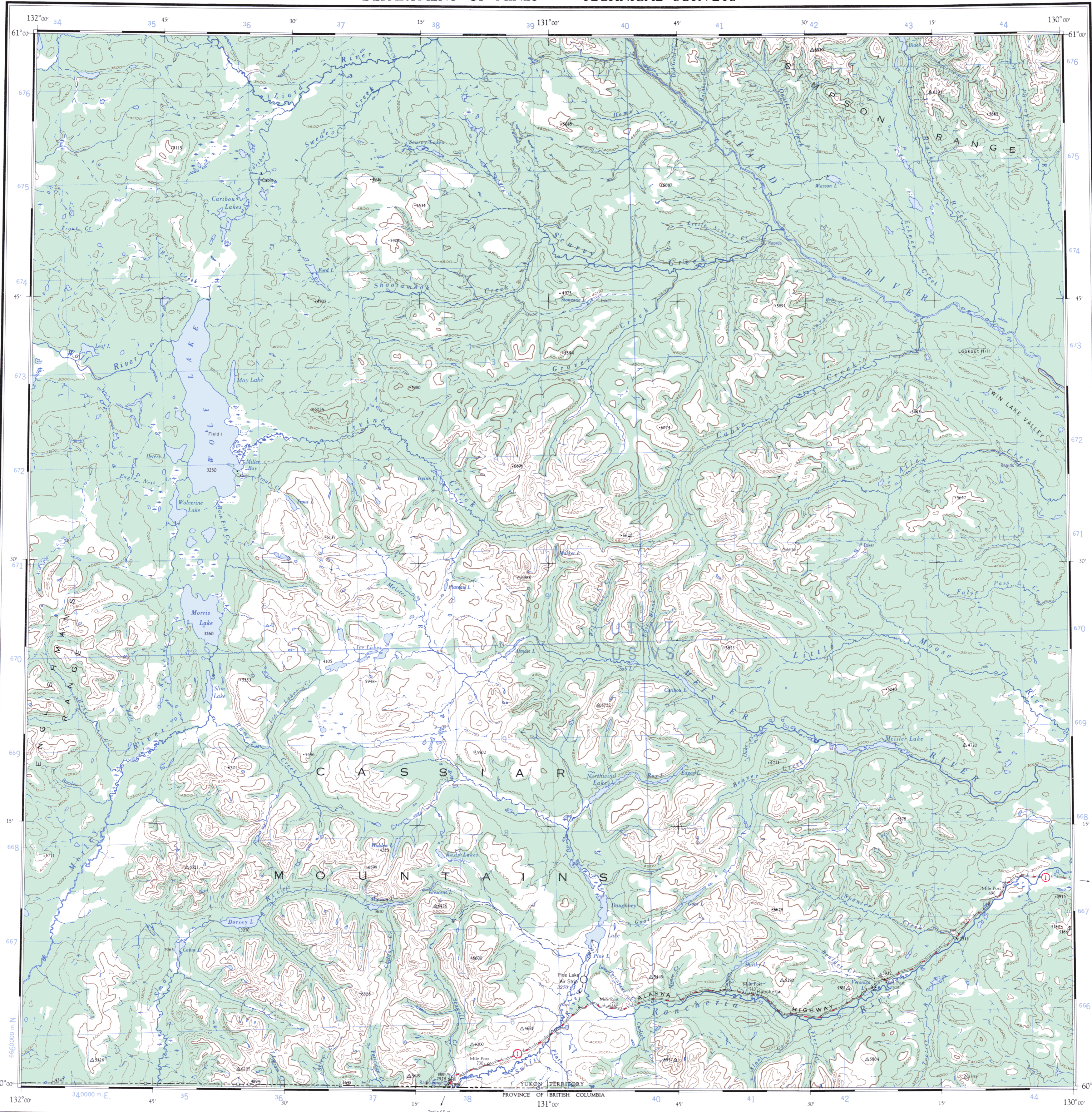


Military users, refer to this map as: Réference de cette carte pour usage militaire.

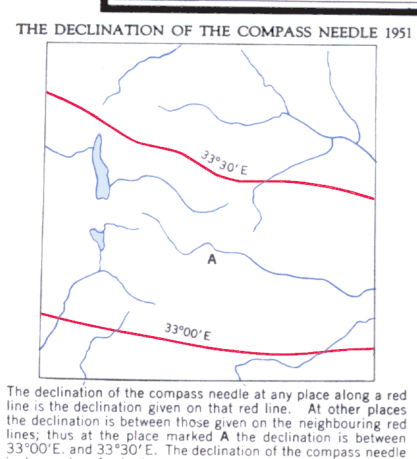
SERIES A 502 MAP 105 B EDITION 3

SÉRIE CARTE 105 B ÉDITION 3



TEN THOUSAND METRE UNIVERSAL TRANSVERSE MERCATOR GRID ZONE 9

Grid zone designation and triangulation station information. Includes a table with columns for Grid Zone Designation (9V), Triangulation Station (VT 1509), and Sample Point (9VVT1509).



Legend for symbols and lines used on the map. It lists various features like roads, boundaries, streams, and power lines with their corresponding symbols and colors.

Universal Transverse Mercator Projection. Interim corrections 1979. © 1979 Her Majesty the Queen in Right of Canada. Department of Energy, Mines and Resources.

WOLF LAKE YUKON TERRITORY

Scale 1:250,000. 1 Inch to 4 Miles Approximately. Includes a scale bar in miles and kilometers.

Contour interval 500 Feet. All Elevations in Feet above Mean Sea Level. Corrections provisoires 1979. © 1979 Sa Majesté La Reine du Chef du Canada. Ministère de l'Énergie, des Mines et des Ressources.

Reference symbols table. Lists various symbols used on the map for features like buildings, schools, post offices, streams, marshes, and power lines.

