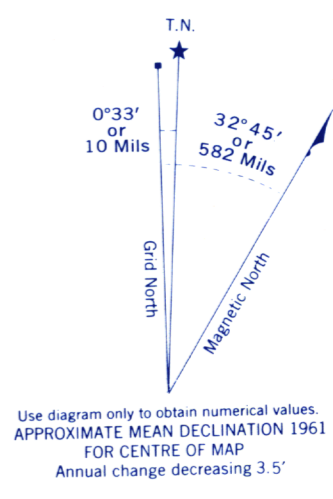
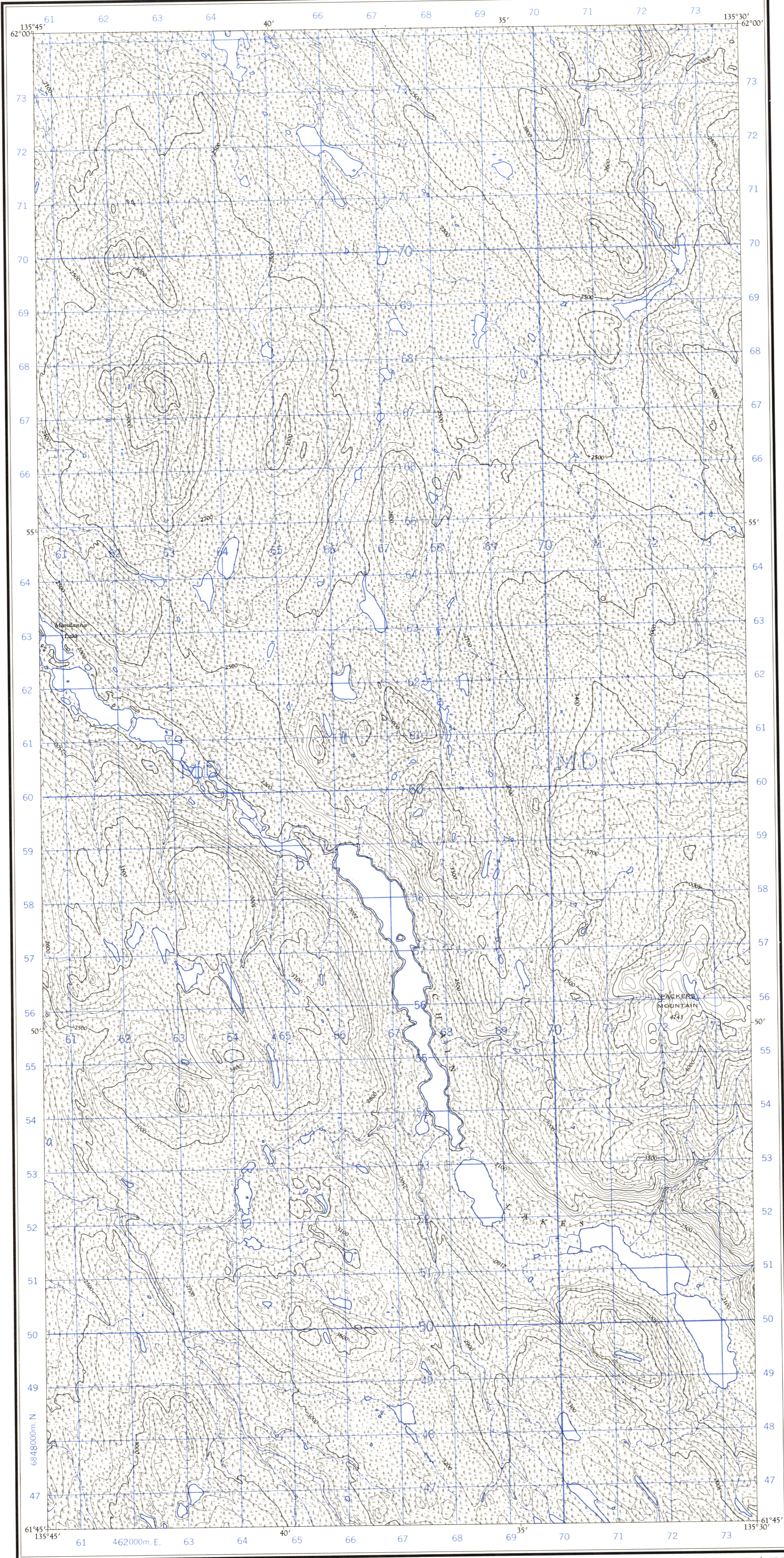


Refer to this map as: 105 E/13 EAST EDITION 1 ASE SERIES A 722



Use diagram only to obtain numerical values. APPROXIMATE MEAN DECLINATION 1961 FOR CENTRE OF MAP Annual change decreasing 3.5"

Grid zone designation table showing 8V and MD, and a reference example for 'STREAM JUNCTION' with easting and northing coordinates.

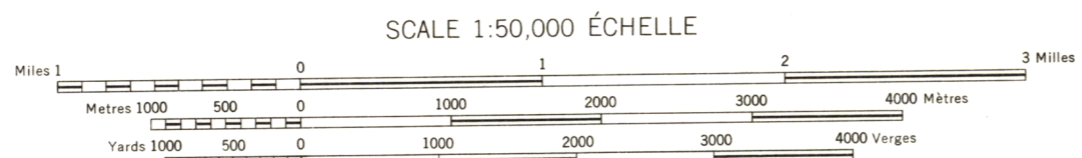
ONE THOUSAND METRE UNIVERSAL TRANSVERSE MERCATOR GRID ZONE 8

Produced and printed by the SURVEYS AND MAPPING BRANCH, DEPARTMENT OF MINES AND TECHNICAL SURVEYS, 1961, from air photographs taken in 1949.

MANDANNA LAKE YUKON TERRITORY

Établie et imprimée par la DIRECTION DES LEVÉS ET DE LA CARTOGRAPHIE, MINISTÈRE DES MINES ET DES RELEVÉS TECHNIQUES en 1961, d'après les photographies aériennes prises en 1949.

- Legend for roads, routes, and other features including symbols for all-weather roads, dry tracks, cart tracks, and power transmission lines.



CONTOUR INTERVAL 100 FEET Elevations in Feet above Mean Sea Level North American Datum 1927 Transverse Mercator Projection

- Legend for buildings, schools, churches, lighthouses, rivers, streams, lakes, marshes, and depressions.

MAGNETIC DECLINATION 32° 12' EAST AT CENTRE OF MAP 1961: 32° 12' EAST Annual change (decreasing) 3.5"

La nomenclature de la présente carte n'a pas été soumise à la Commission canadienne des noms géographiques et par conséquent, elle pourrait faire l'objet d'une révision.