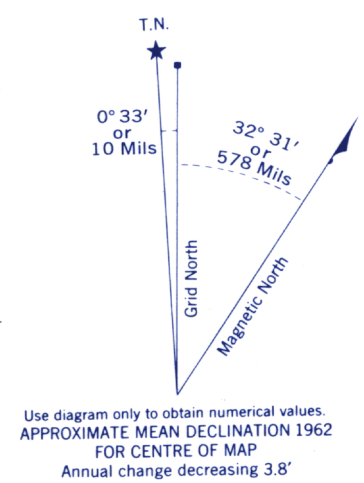
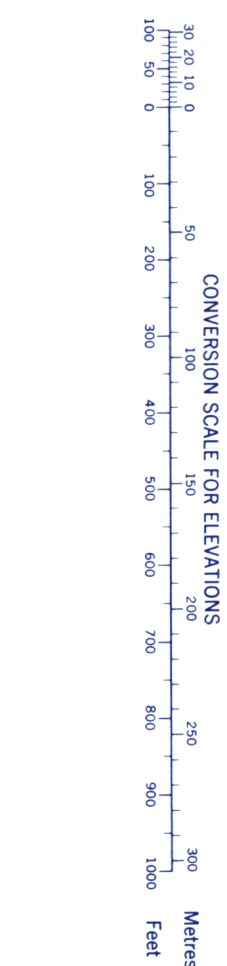
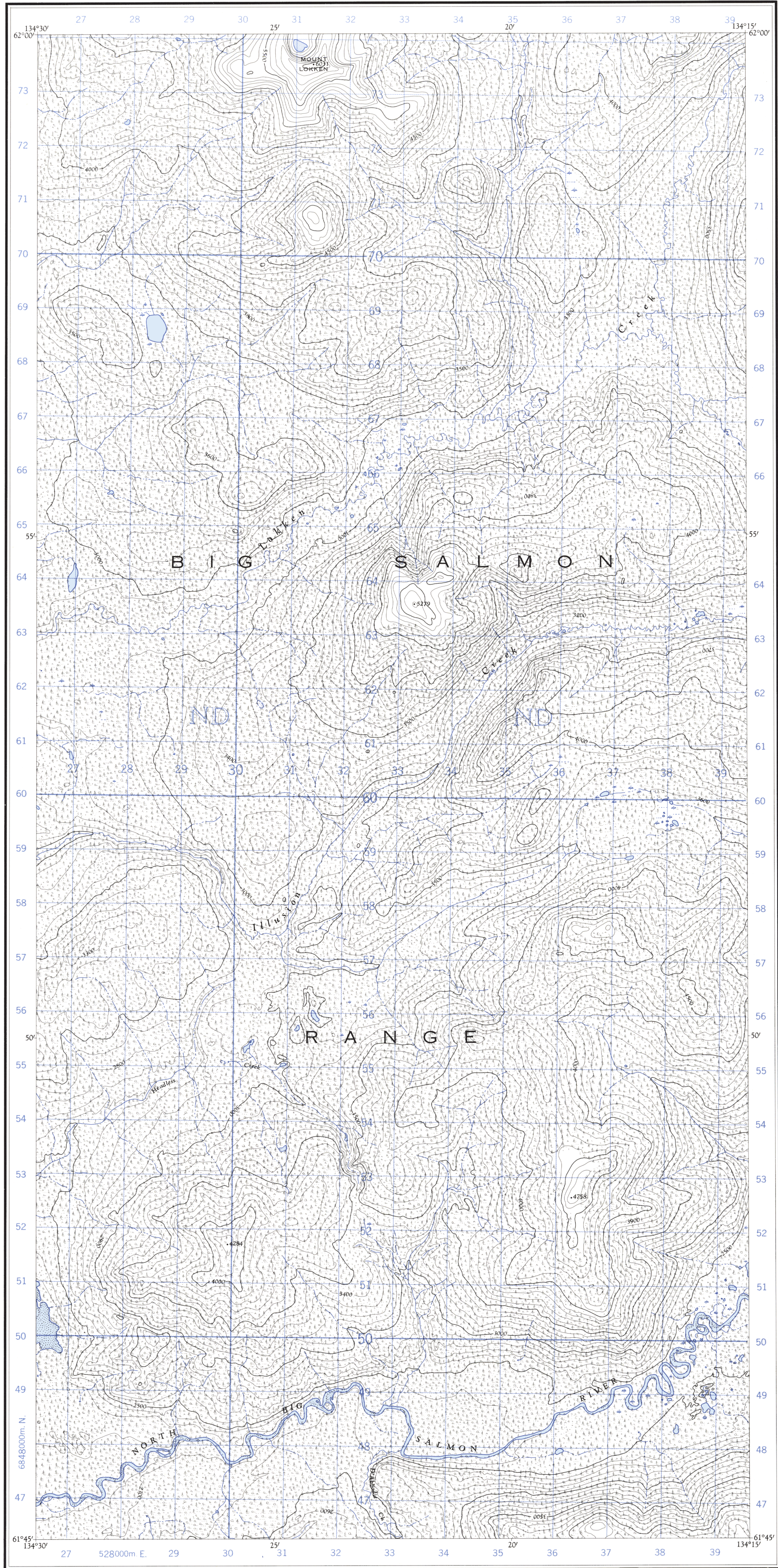


Refer to
this map as:
105 E/16 WEST
EDITION 1 ASE
SERIES A 722



GRID ZONE DESIGNATION	100,000 M. SQUARE IDENTIFICATION
8 V	ND
TO GIVE A REFERENCE TO NEAREST 100 METRES	
EXAMPLE: STREAM JUNCTION	
EASTING: Read number on grid line immediately to left of point	32
Estimate tenths of a square from this line eastward to point.	0
NORTHING: Read number on grid line immediately below point	320
Estimate tenths of a square from this line northward to point.	4
MILITARY GRID REFERENCE	320594
Nearest similar grid reference 100,000 metres (about 63 miles)	

ONE THOUSAND METRE
UNIVERSAL TRANSVERSE MERCATOR GRID
ZONE 8

Compiled 1960, by the SURVEYS AND MAPPING BRANCH,
DEPARTMENT OF MINES AND TECHNICAL SURVEYS, from
air photographs taken in 1949. Field surveys 1934 and 1957.
Printed 1962.

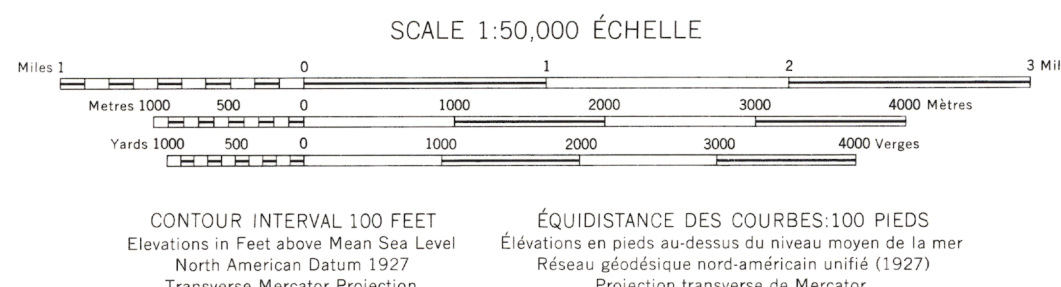
Copies may be obtained from the Map Distribution Office,
Department of Mines and Technical Surveys, Ottawa.

SOLITARY MOUNTAIN
YUKON TERRITORY

Complée en 1960, par la DIRECTION DES LEVÉS ET DE LA
CARTOGRAPHIE, MINISTÈRE DES MINES ET DES RELEVÉS
TECHNIQUES, d'après les photographies aériennes prises en 1949.
Travaux exécutés sur le terrain en 1934 et 1957. Imprimée en
1962.

Ces cartes sont en vente au Bureau de distribution des cartes,
ministère des Mines et des Relevés techniques, Ottawa.

- | | |
|------------------------------------------|-----------------------------------------------|
| Roads | Routes |
| all weather | toute saison |
| dry weather | période sèche |
| cart track | de terre |
| trail or portage | sentier ou portage |
| Railway, normal gauge, single track | Chemin de fer voie unique (écartement normal) |
| Power transmission line | Ligne de transport d'énergie |
| Mine or Open cut | Mine ou fosse à ciel ouvert |
| Horizontal control point, with elevation | Point géodésique avec cote |
| Bench mark, with elevation | Repère de nivellement avec cote |
| | 454 |
| | BM 157 |



- | | | | |
|--------------------------------|-----------------------------------|-------------|-----------------|
| Building | Bâtiment | Barn | Grange |
| School | École | Post Office | Bureau de poste |
| Church | Église | Cemetery | Cimetière |
| Lighthouse | Phare | | |
| River with bridge | Rivière avec pont | | |
| Stream, intermittent or dry | Cours d'eau intermittent ou à sec | | |
| Lake, intermittent, indefinite | Lac intermittent, rive imprécise | | |
| Marsh or Swamp | Marais ou marécage | | |
| Depression contours | Courbes de cuvette | | |