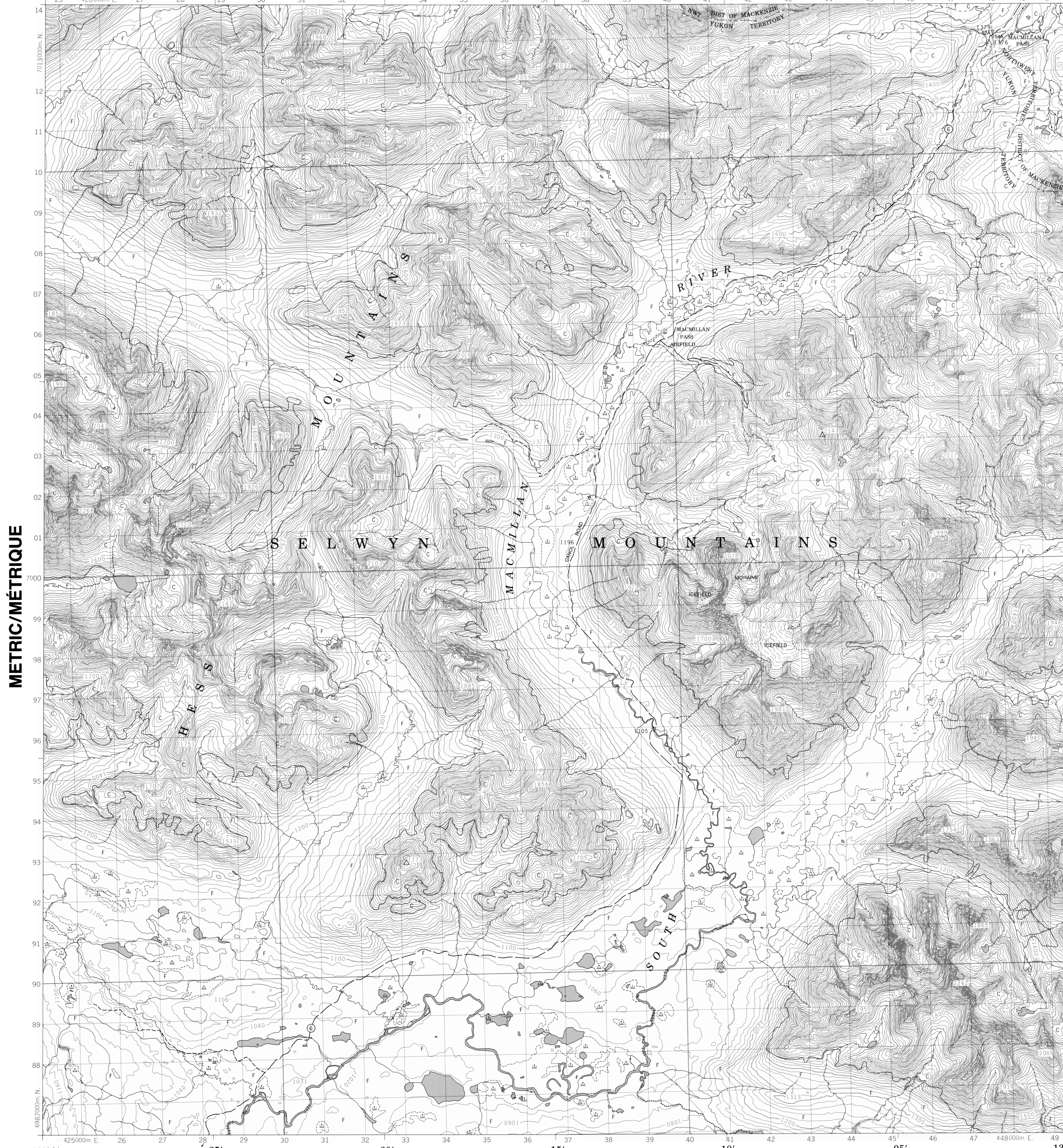


Digital Mapping Cartographie Numérique Military users, refer to this map as: Références de cette carte pour usage militaire. SERIES A 701 SÉRIE MAP 105-O/1 CARTE EDITION 1 MCE ÉDITION



LEGEND - LÉGENDE. A detailed list of symbols and their corresponding features, including roads, railways, bridges, and various types of terrain and structures.

GLOSSARY - GLOSSAIRE. A list of terms and their definitions, such as AIRFIELD, ICEFIELD, and MORAINES.

PHOTOGRAPHY COMPILATION and RESTITUTION. Includes a grid diagram showing how a 100m square is divided into smaller units and a diagram illustrating the method used to derive a reference point from a grid.

EXAMPLE OF METHOD USED TO OBTAIN A REFERENCE TO NEAREST 100 METRES. Includes a grid diagram and a table showing the conversion of coordinates from the grid to a reference point.

ONE THOUSAND METRE UNIVERSAL TRANSVERSE MERCATOR GRID. Includes a grid diagram and a table showing the conversion of coordinates from the grid to a reference point.

CONVERSION SCALE FOR ELEVATIONS. Includes a scale bar for converting between feet and meters, and a table showing the conversion of elevations.

PRODUCED BY THE SURVEYS AND MAPPING BRANCH, DEPARTMENT OF ENERGY, MINES AND RESOURCES, OTTAWA, PUBLISHED IN 1982.

ELEVATIONS IN METRES ABOVE MEAN SEA LEVEL. CONTOUR INTERVAL 20 METRES. NORTH AMERICAN DATUM 1927. TRANSVERSE MERCATOR PROJECTION.

NO TITLE. YUKON TERRITORY-NORTHWEST TERRITORIES. Scale 1:50 000 Échelle. METERS EN MÉTRES. ÉQUIDISTANCE DES COURBES 20 MÈTRES. SYSTÈME DE RÉFÉRENCE GÉODÉSIQUE NORD-AMÉRICAIN 1927. PROJECTION TRANSVERSE DE MERCATOR.

ÉTABLI PAR LA DIRECTION DES LEVÉS ET DE LA CARTOGRAPHIE, MINISTÈRE DE L'ÉNERGIE, DES MINES ET DES RESSOURCES, OTTAWA, PUBLIÉE EN 1982.

INSPECTION OF THIS MAP USING 1983 SATELLITE IMAGES REVEALED NO CHANGES IN MAJOR HYDROGRAPHIC OR CONSTRUCTED FEATURES. UNE VÉRIFICATION DE CETTE CARTE AU MOYEN D'IMAGES SATELLITE DE 1983 N'A MONTRÉ AUCUN CHANGEMENT EN CE QUI CONCERNE LES ÉLÉMENTS HYDROGRAPHIQUES OU LES ÉLÉMENTS RAPPORTÉS (CONSTRUCTIONS) D'IMPORTANCE.

NO TITLE. 105-O/1. ÉDITION 1 ÉDITION. Energy, Mines and Resources Canada. Énergie, Mines et Ressources Canada.