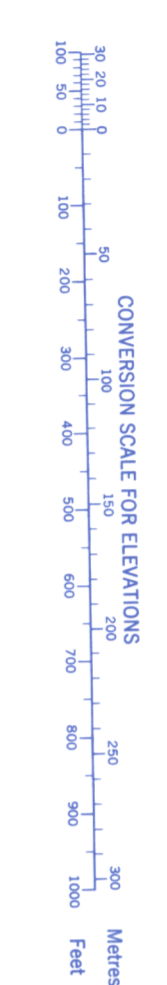
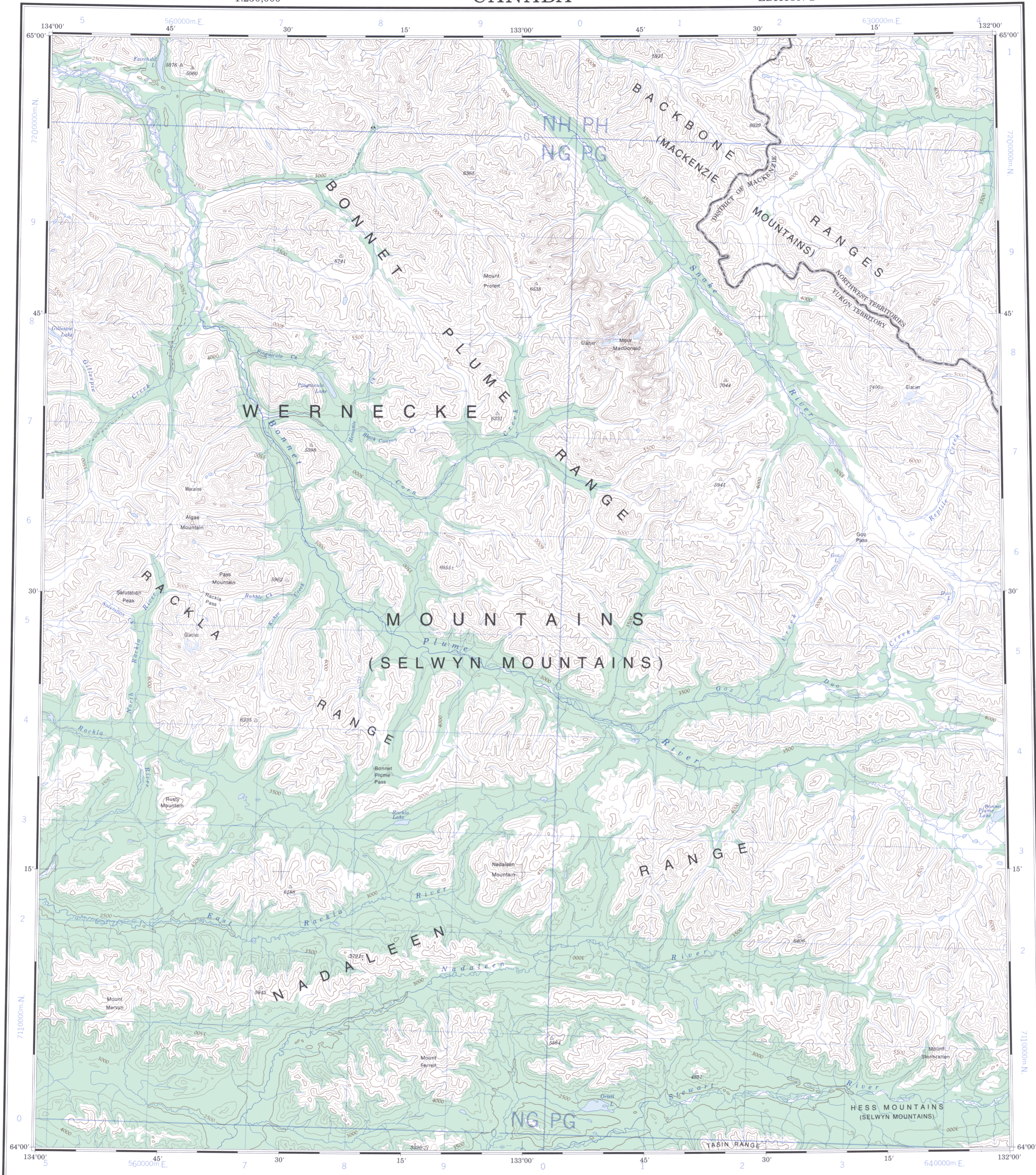
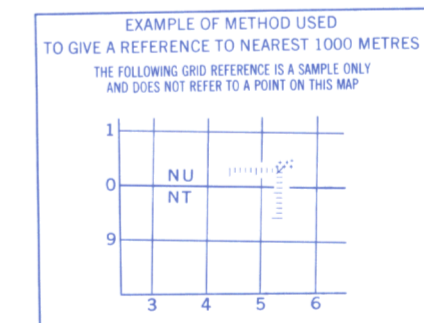


Refer to this map as: 106 C EDITION 2 MCE SERIES A 502



TEN THOUSAND METRE UNIVERSAL TRANSVERSE MERCATOR GRID ZONE 8

GRID ZONE DESIGNATION	100,000 M. SQUARE IDENTIFICATION
8W	72 NH PH 71 NG PG 70 NF PF



REFERENCE POINT	ROCKS (as above)
SQUARE: Read letters of 100,000 m square	NU
EASTING: Read number on grid line immediately to left of point	5
Estimate tenths of a square from this line eastward to point	54
NORTHING: Read number on grid line immediately below point	0
Estimate tenths of a square from this line northward to point	04

EXAMPLE MILITARY GRID REFERENCE NUS404

If reporting beyond 18° in any direction, prefix Grid Zone Designation as 15VNU5404

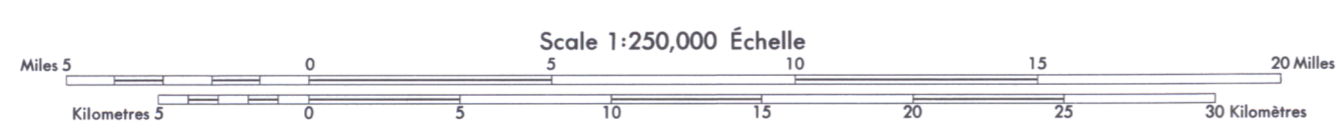
RELIABILITY DIAGRAM - CROQUIS D'EXACTITUDE

Produced, 1971, by the SURVEYS AND MAPPING BRANCH, DEPARTMENT OF ENERGY, MINES AND RESOURCES. Printed 1972. Magnetic declination 1972 varies from 34°58' easterly at centre of west edge to 35°32' easterly at centre of east edge. Mean annual change 5.0' westerly.

Roads: cart track..... trail or portage..... FOR COMPLETE REFERENCE SEE REVERSE SIDE

NADALEEN RIVER

YUKON TERRITORY - NORTHWEST TERRITORIES



CONTOUR INTERVAL 500 FEET Elevations in feet above Mean Sea Level North American Datum 1927 Transverse Mercator Projection

ÉQUIDISTANCE DES COURBES 500 PIEDS Élévations en pieds au-dessus du niveau moyen de la mer Système de référence géodésique nord-américain, 1927 Projection transverse de Mercator

Copies may be obtained from the Canada Map Office, Department of Energy, Mines and Resources, Ottawa, or your nearest map dealer.

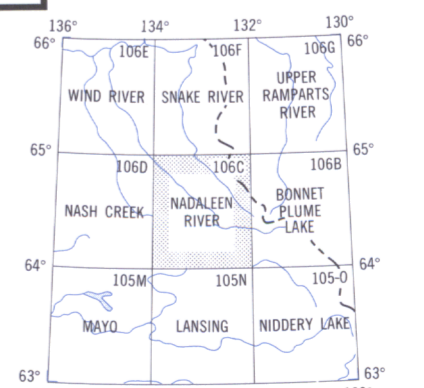
Ces cartes sont en vente au Bureau des Cartes du Canada, ministère de l'Énergie, des Mines et des Ressources, Ottawa, ou chez le vendeur le plus près.

© Canada Copyrights Reserved 1973

© Canada 1973, tous droits réservés

Établi en 1971, par la DIRECTION DES LEVÉS ET DE LA CARTOGRAPHIE, MINISTÈRE DE L'ÉNERGIE, DES MINES ET DES RESSOURCES. Imprimé en 1972. La déclinaison magnétique pour 1972 varie de 34°58' Est au centre de la limite Ouest à 35°32' Est au centre de la limite Est. Variation moyenne annuelle 5.0' Ouest.

Routes: de terre..... sentier ou portage..... POUR UNE LISTE COMPLÈTE DES SIGNES, VOIR AU VERSO



Large scale mapping photogrammetric, 1968. Cartographie à grande échelle, photogrammétrie, 1968.