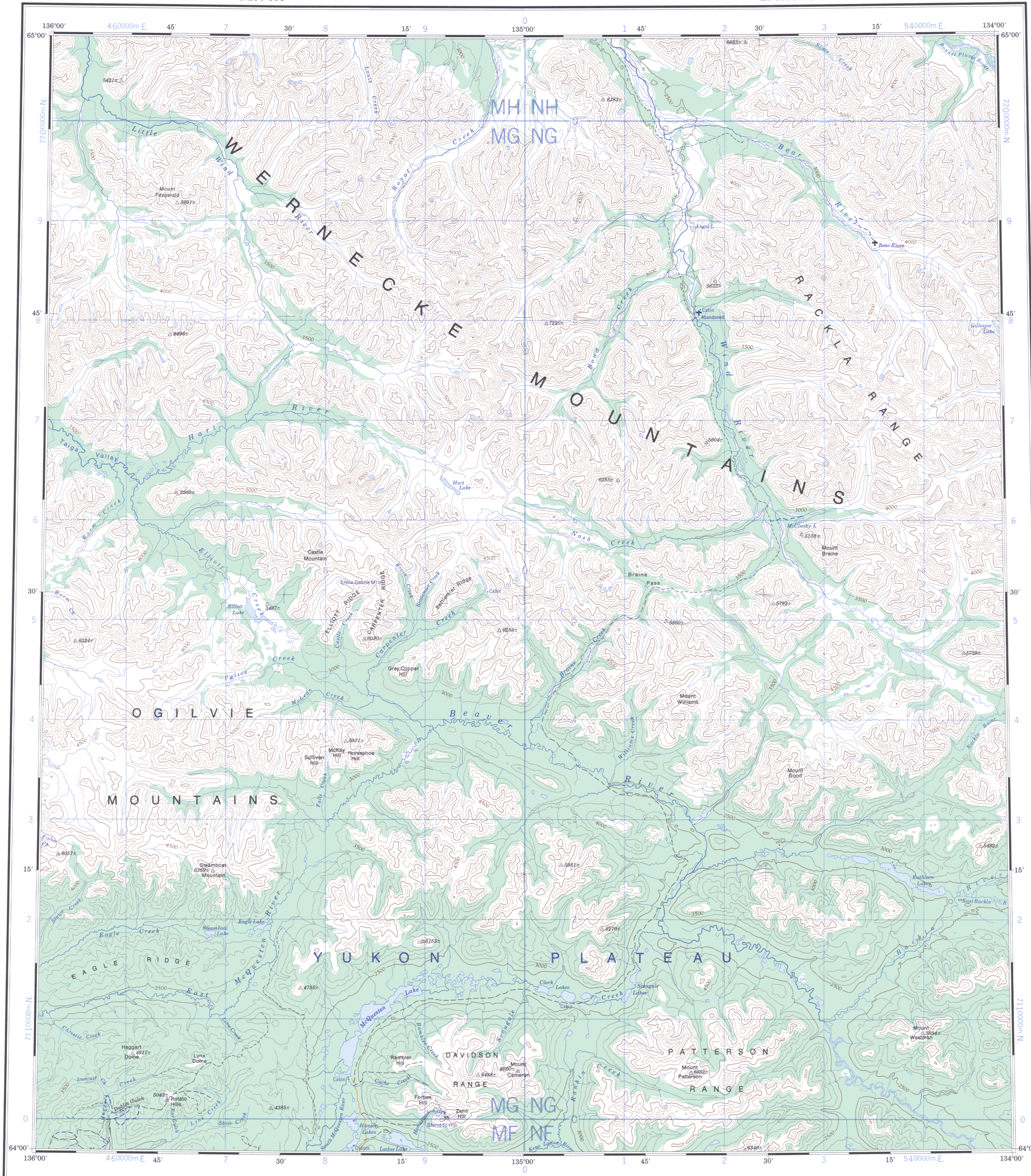


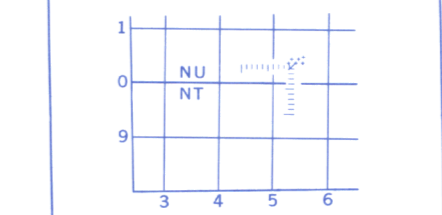
Military users, refer to this map as: **SÉRIE A 502**  
 Réference de cette carte pour usage militaire: **MAP 106 D** **CARTE ÉDITION 3 MCE**



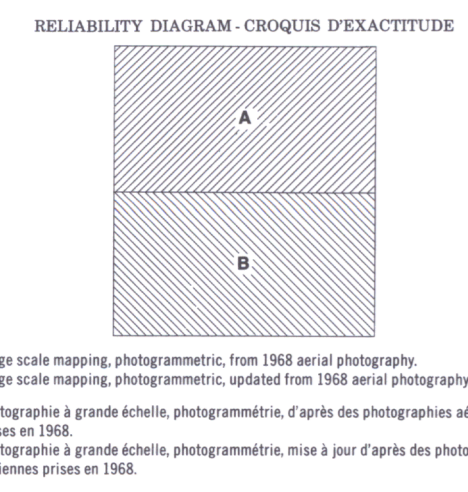
**TEN THOUSAND METRE  
 UNIVERSAL TRANSVERSE MERCATOR  
 GRID ZONE 8**

GRID ZONE DESIGNATION	100 000 M. SQUARE IDENTIFICATION
8W	MH NH 72
	MG NG 71
	MF NF 5

EXAMPLE OF METHOD USED TO GIVE A REFERENCE TO NEAREST 1000 METRES. THE FOLLOWING GRID REFERENCE IS A SAMPLE ONLY AND DOES NOT REFER TO A POINT ON THIS MAP



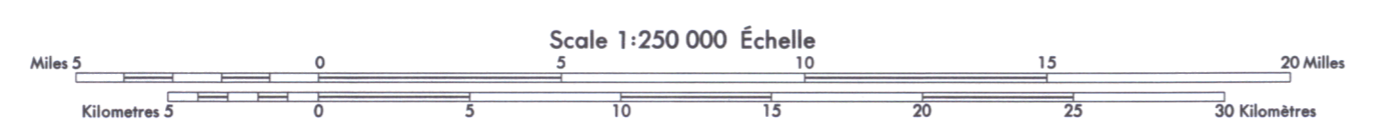
REFERENCE POINT	ROCKS (as above)
SQUARE: Read letters of 100 000 m. square: NU	
EASTING: Read number on grid line immediately to left of point. Estimate tenths of a square from this line eastward to point.	5 4 54
NORTHING: Read number on grid line immediately below point. Estimate tenths of a square from this line northward to point.	0 4 04
EXAMPLE MILITARY GRID REFERENCE	NUS404
If reporting beyond 18° in any direction, prefix Grid Zone Designation as: 15VNU5404	



Produced, 1972, by the SURVEYS AND MAPPING BRANCH, DEPARTMENT OF ENERGY, MINES AND RESOURCES, from large scale maps. Printed 1972. This map was checked in 1980 and found to be up-to-date in all major features. Interim corrections 1981. Magnetic declination 1981 varies from 32°46' easterly at centre of west edge to 33°17' easterly at centre of east edge. Mean annual change decreasing 6.3.

ROADS - ROUTES  
 hard surface - pavée  
 loose surface - de gravier  
 cart track - de terre  
 trail - sentier

**NASH CREEK  
 YUKON TERRITORY**



CONTOUR INTERVAL 500 FEET  
 Elevations in Feet above Mean Sea Level  
 North American Datum 1927  
 Transverse Mercator Projection

Établie en 1972, par la DIRECTION DES LEVÉS ET DE LA CARTOGRAPHIE, MINISTÈRE DE L'ÉNERGIE, DES MINES ET DES RESSOURCES, d'après des cartes à grande échelle. Imprimée en 1972. On a vérifié cette carte en 1980, nous avons constaté que toutes ses caractéristiques principales étaient à jour. Corrections provisoires 1981. En 1981, la déclinaison magnétique au milieu du bord ouest de la carte est de 32°46' Est et de 33°17' Est au milieu du bord est. La déclinaison annuelle moyenne diminue de 6,3.



Routes:  
 gravier aggloméré, toute saison  
 de gravier période sèche  
 de terre  
 sentier ou portage

