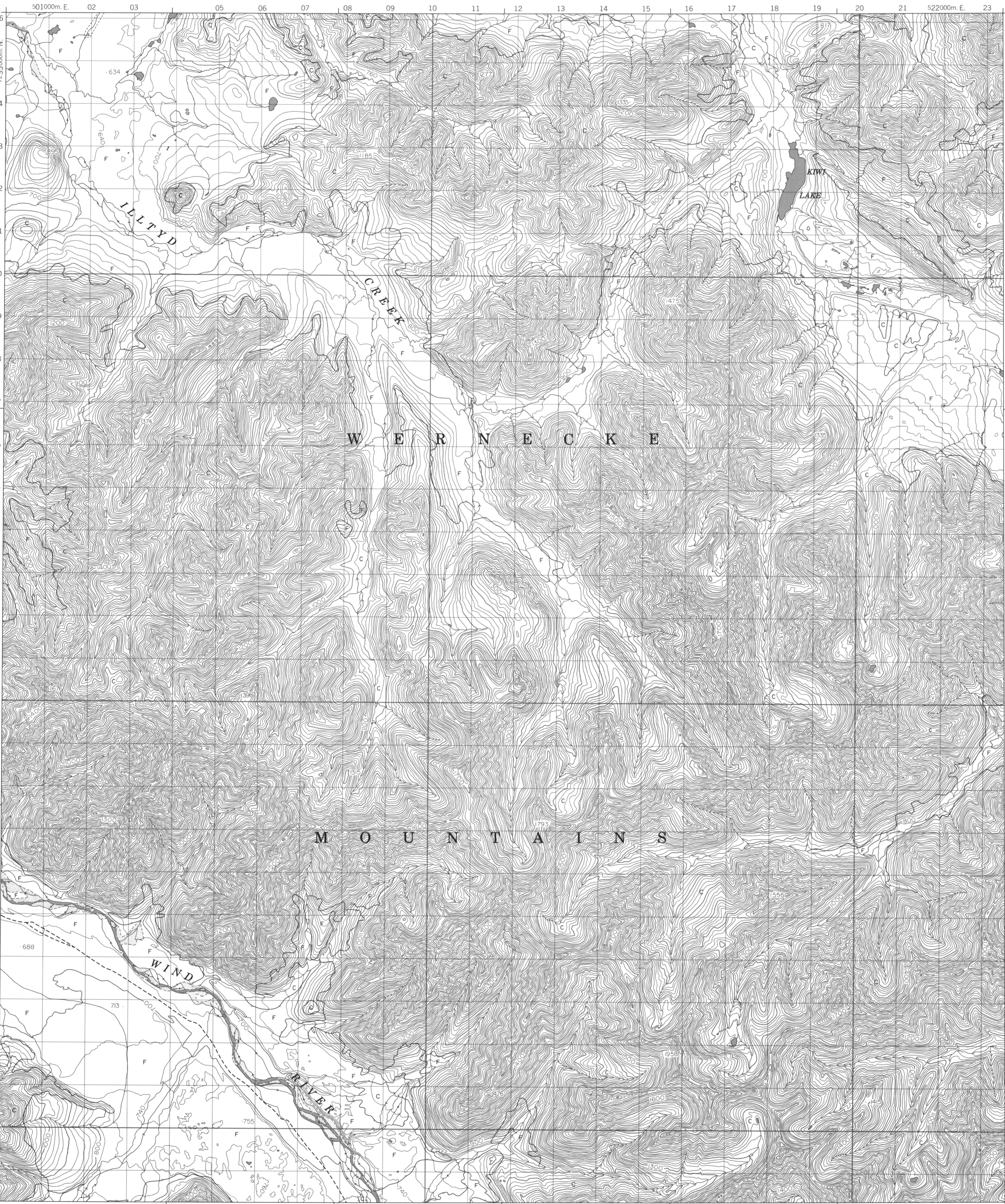
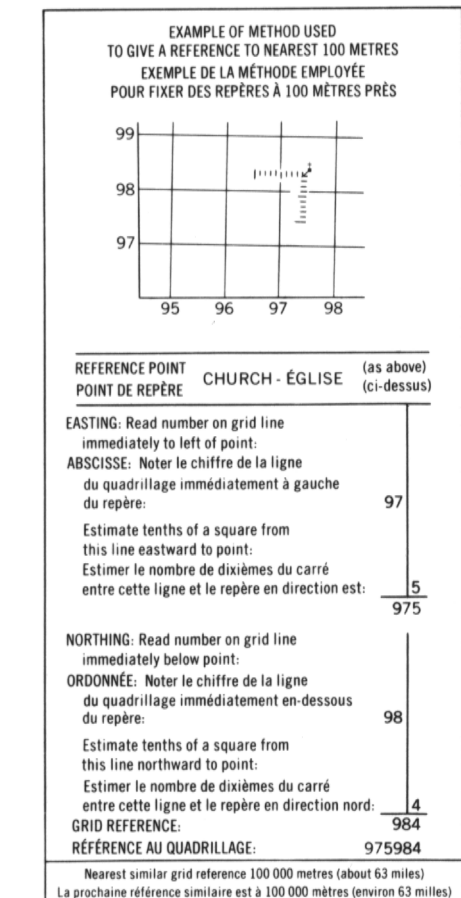
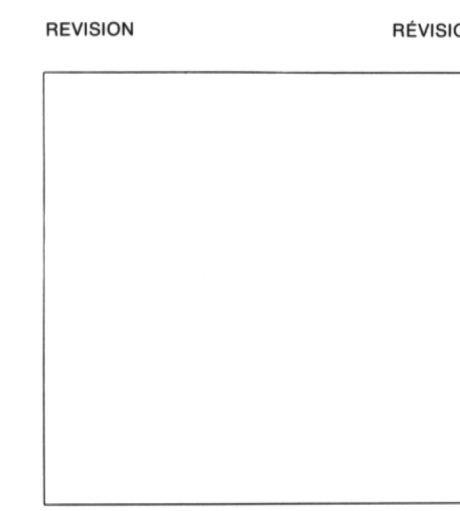
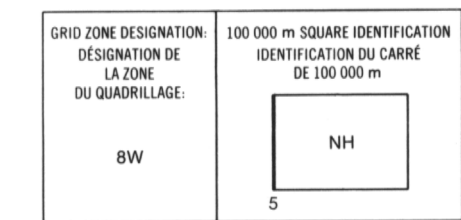
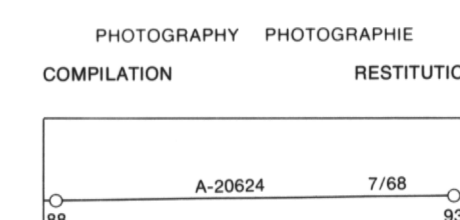


Military users, refer to this map as: MAP 106 E/2 CARTE Références de cette carte pour usage militaire: ÉDITION 1 MCE ÉDITION



LEGEND - LÉGENDE

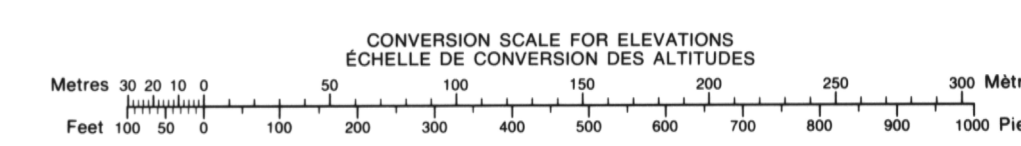
Legend table with two columns: English and French descriptions of symbols for roads, railways, water features, and terrain. Includes symbols for contour lines, spot elevations, and various landmarks.



Grid table showing map sheet coordinates: 106 E/6, 106 E/7, 106 E/8, 106 E/3, 106 E/2, 106 E/1, 106 D/14, 106 D/15, 106 D/16.

ONE THOUSAND METRE UNIVERSAL TRANSVERSE MERCATOR GRID ZONE 8

The 1982 MAGNETIC BEARING is 32°57' (586 mls) EAST OF GRID NORTH. ANNUAL CHANGE DECREASING 6.5' GRID NORTH is 0°14' (4 mls) EAST OF TRUE NORTH for centre of map.



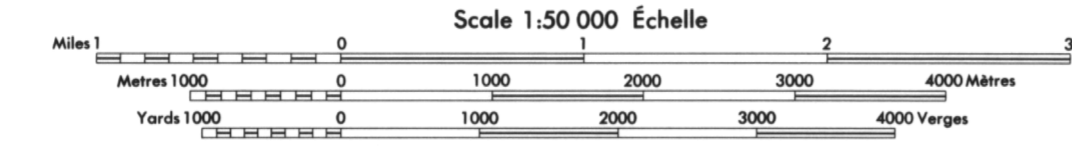
PRODUCED BY THE SURVEYS AND MAPPING BRANCH, DEPARTMENT OF ENERGY, MINES AND RESOURCES, OTTAWA. PUBLISHED IN 1982.

ELEVATIONS IN METRES ABOVE MEAN SEA LEVEL CONTOUR INTERVAL ..... 20 METRES NORTH AMERICAN DATUM 1927 TRANSVERSE MERCATOR PROJECTION

KIWI LAKE YUKON TERRITORY

ALTITUDES EN MÈTRES ÉQUIDISTANCE DES COURBES ..... 20 MÈTRES SYSTÈME DE RÉFÉRENCE GÉODÉSIQUE NORD-AMÉRICAIN 1927 PROJECTION TRANSVERSE DE MERCATOR

ÉTABLI PAR LA DIRECTION DES LEVÉS ET DE LA CARTOGRAPHIE, MINISTÈRE DE L'ÉNERGIE, DES MINES ET DES RESSOURCES, OTTAWA, PUBLIÉ EN 1982.



ON PEUT OBTENIR DES RENSEIGNEMENTS SUR LE LIEU ET L'ALTITUDE EXACTE DES REPERES DE NIVELLEMENT EN ÉCRIVANT AUX LEVÉS GÉODÉSISTIQUES, DIRECTION DES LEVÉS ET DE LA CARTOGRAPHIE, OTTAWA.