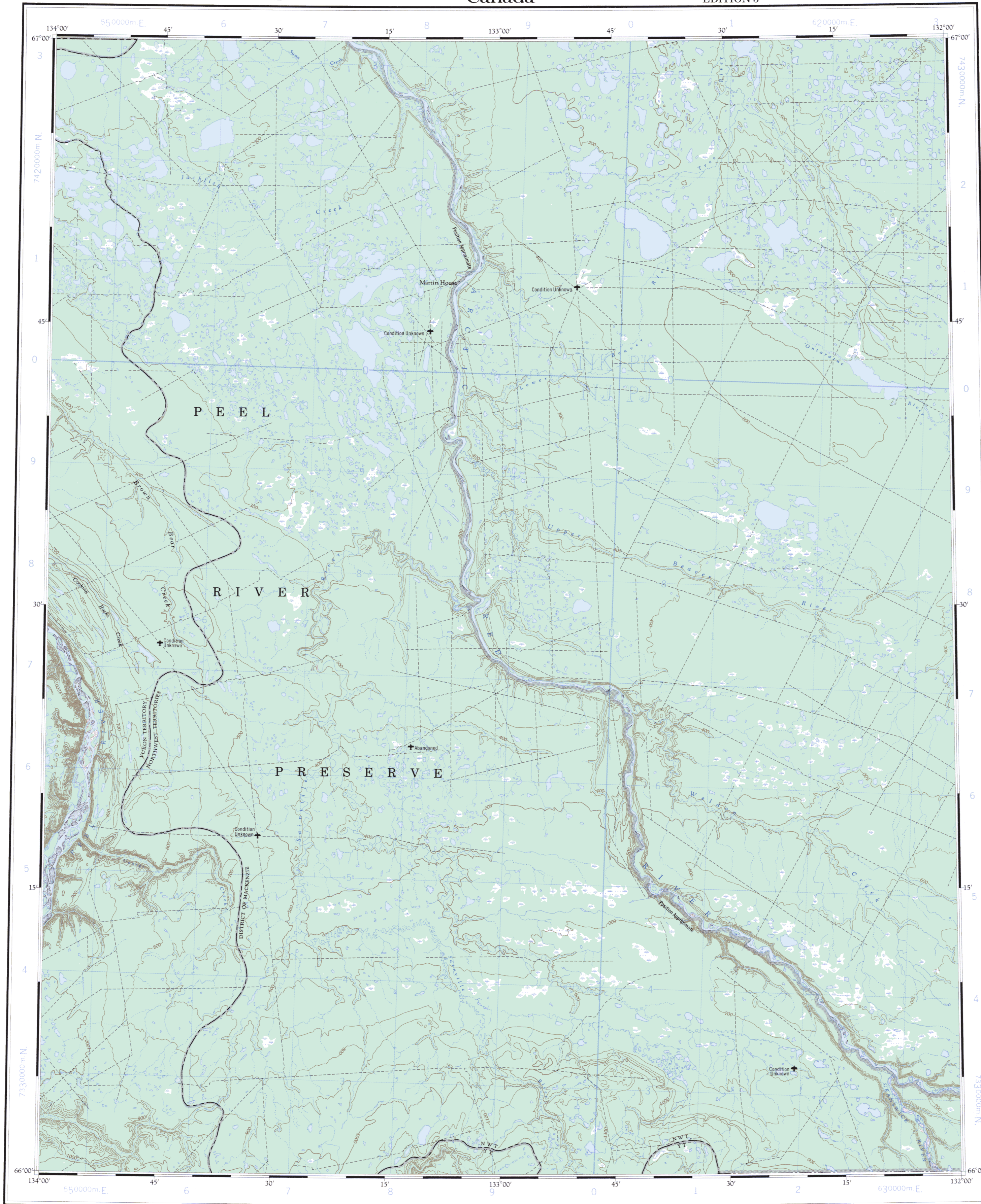


Military users, refer to this map as:	SERIES A 502	SÉRIE
Référence de cette carte pour usage militaire:	MAP 106 K	CARTE
	EDITION 3	MCE ÉDITION



GRID ZONE DESIGNATION BW	100,000 M. SQUARE IDENTIFICATION NK 106 K NJ PJ 740 60
-----------------------------	--

TO GIVE A REFERENCE TO NEAREST 1000 METRES

EXAMPLE: BUILDING

SQUARE: Read letters of 100,000 m square NK  
EASTING: Read number on grid line immediately to left of point  
Estimate tenths of a square from this line eastward to point.  
NORTHING: Read number on grid line immediately below point  
Estimate tenths of a square from this line northward to point

MILITARY GRID REFERENCE (to nearest 1,000 metres) NK 8308

If reporting beyond 18° in any direction, prefix Grid Zone Designation as: BWNK8308

TEN THOUSAND METRE  
UNIVERSAL TRANSVERSE MERCATOR GRID  
ZONE 8

This map was checked in 1980 and updated in all major features.  
Interim corrections 1981

The magnetic compass may be erratic in this area.  
Magnetic declination 1981 varies from 35°43' easterly at centre of west edge to 36°05' easterly at centre of east edge. Mean annual change decreasing 7.7'.

© 1982, Her Majesty the Queen in Right of Canada.  
Department of Energy, Mines and Resources.

Cette carte a été vérifiée en 1980 et tous les éléments importants ont été mis à jour.  
Corrections provisoires 1981

La boussole sera peut-être instable dans cette région.

En 1981, la déclinaison magnétique au milieu du bord ouest de la carte est de 35°43' Est et de 36°05' Est au milieu du bord est. La déclinaison annuelle moyenne diminue de 7,7'.

© 1982, Sa Majesté La Reine du Chef du Canada.  
Ministère de l'Énergie, des Mines et des Ressources.

Produced and printed by the SURVEYS AND MAPPING BRANCH,  
DEPARTMENT OF MINES AND TECHNICAL SURVEYS, 1959,  
from air photographs taken in 1954.

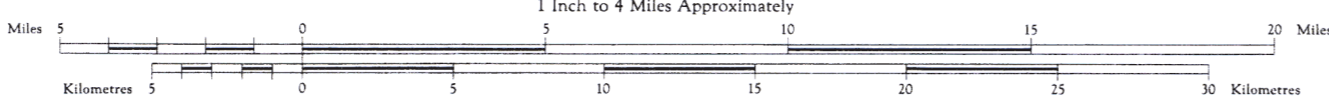
Transverse Mercator Projection

Contour Interval 100 Feet  
Elevations in Feet above Mean Sea Level  
North American Datum 1927

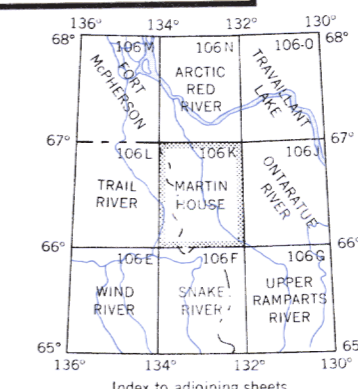
# MARTIN HOUSE

## YUKON - NORTHWEST TERRITORIES

Scale 1:250 000  
1 Inch to 4 Miles Approximately



- REFERENCE
- Streams: intermittent or dry
  - Indefinite
  - Rapids, falls
  - Marsh or swamp
  - Contours: elevation
  - depression
  - approximate
  - Forest
  - Artificial



MARTIN HOUSE  
106 K  
EDITION 3