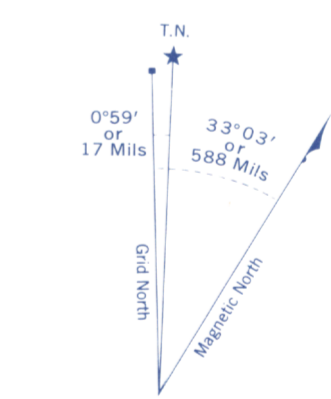
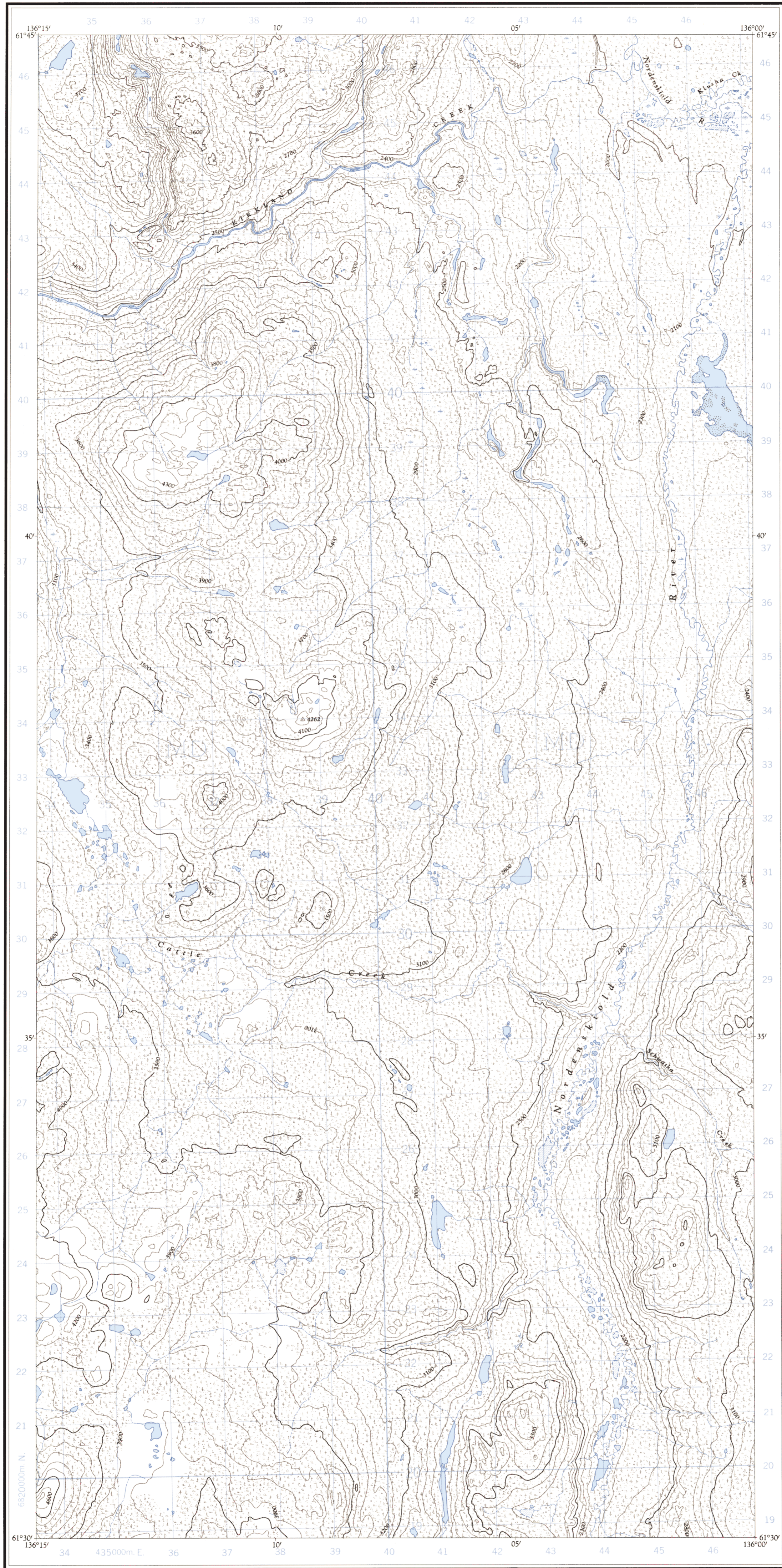


Military users, refer to this map as: **SERIES A722 SÉRIE MAP 115 H/9E CARTE**  
Référence de la carte pour usage militaire: **EDITION 1 MCE ÉDITION**



Use diagram only to obtain numerical values.  
APPROXIMATE MEAN DECLINATION 1961 FOR CENTRE OF MAP  
Annual change decreasing 3.0'

GRID ZONE DESIGNATION	100,000 M. SQUARE IDENTIFICATION
8V	MD
TO GIVE A REFERENCE TO NEAREST 100 METRES	
EXAMPLE: STREAM JUNCTION	
EASTING: Road number on grid line immediately to left of point	43
Estimate tenths of a square from this line eastward to point.	5
	435
NORTHING: Read number on grid line immediately below point	31
Estimate tenths of a square from this line northward to point.	9
MILITARY GRID REFERENCE	435319
Nearest similar grid reference 100,000 metres (about 63 miles)	

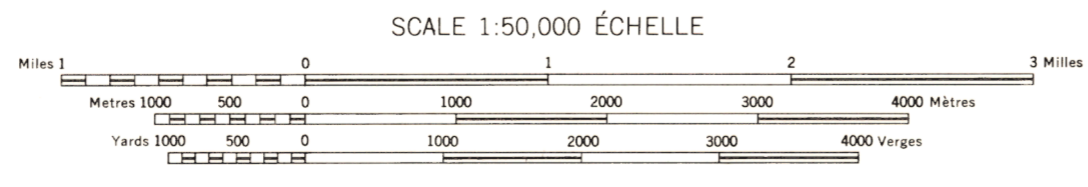
ONE THOUSAND METRE  
UNIVERSAL TRANSVERSE MERCATOR GRID  
ZONE 8

Produced and printed by the SURVEYS AND MAPPING BRANCH, DEPARTMENT OF MINES AND TECHNICAL SURVEYS, 1961, from air photographs taken in 1947 and 1954.

Copies may be obtained from the Canada Map Office, Department of Energy, Mines and Resources, Ottawa, or your nearest map dealer.

© Canada Copyrights Reserved 1976

**KIRKLAND CREEK**  
YUKON TERRITORY



CONTOUR INTERVAL 100 FEET  
Elevations in Feet above Mean Sea Level  
North American Datum 1927  
Transverse Mercator Projection

MAGNETIC DECLINATION 32°04' EAST  
AT CENTRE OF MAP 1961  
Annual change (decreasing) 3'

The nomenclature on this map has not been submitted to the Canadian Board on Geographical Names and may be subject to revision. Information on names is invited by the Surveys and Mapping Branch.

Établi et imprimé par la DIRECTION DES LEVÉS ET DE LA CARTOGRAPHIE, MINISTÈRE DES MINES ET DES RELEVÉS TECHNIQUES en 1961, d'après les photographies aériennes prises en 1947 et 1954.

Ces cartes sont en vente au Bureau des Cartes du Canada, ministère de l'Énergie, des Mines et des Ressources, Ottawa, ou chez le vendeur le plus près.

© Canada 1976, tous droits réservés

- Building ..... Bâtiment
- School ..... École
- Church ..... Église
- Lighthouse ..... Phare
- River with bridge ..... Rivière avec pont
- Stream, intermittent or dry ..... Cours d'eau intermittent ou à sec
- Lake intermittent, indefinite ..... Lac intermittent, rive imprécise
- Marsh or Swamp ..... Marais ou marécage
- Depression contours ..... Courbes de cuvette
- Barn ..... Grange
- Post Office ..... Bureau de poste
- Cemetery ..... Cimetière