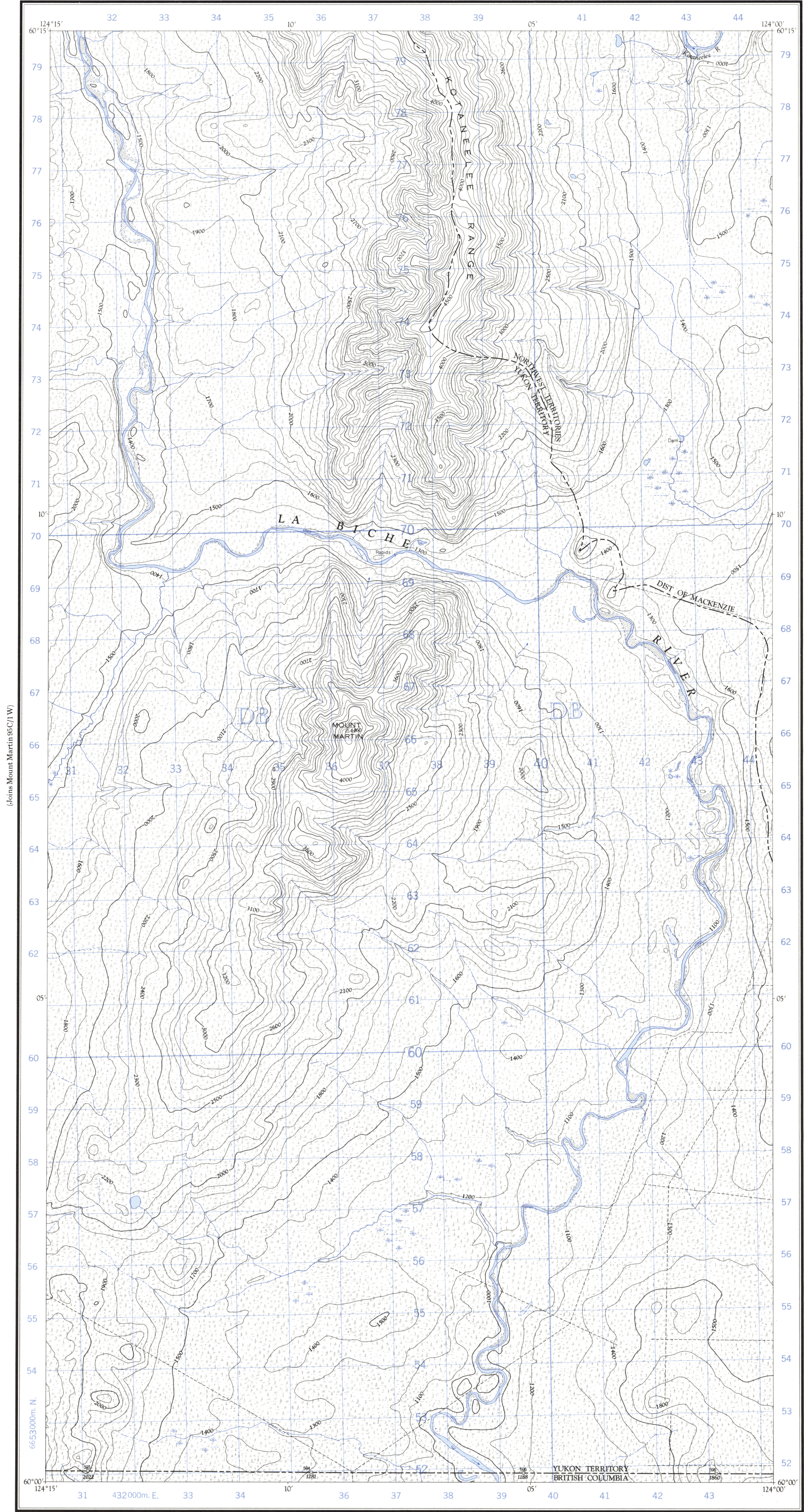
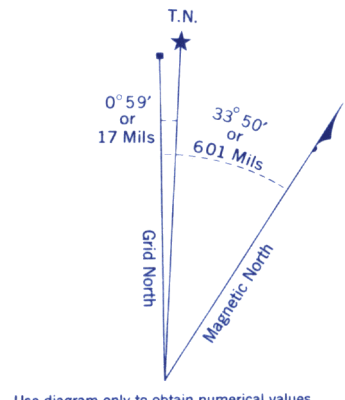


Refer to this map as: 95 C/1 E EDITION 1 ASE SERIES A 722



(Joins Mount Martin 95C/1W)



Use diagram only to obtain numerical values. APPROXIMATE MEAN DECLINATION 1965 FOR CENTRE OF MAP. Annual change decreasing 4.1'

Table with 2 columns: GRID ZONE DESIGNATION (10 V) and 100,000 M. SQUARE IDENTIFICATION (DB).

Table for giving a reference to nearest 100 metres. Example: Stream Junction. EASTING: 40, 4, 404. NORTHING: 69, 4, 694. MILITARY GRID REFERENCE: 404694.

ONE THOUSAND METRE UNIVERSAL TRANSVERSE MERCATOR GRID ZONE 10

Compiled, 1963, by the SURVEYS AND MAPPING BRANCH, DEPARTMENT OF MINES AND TECHNICAL SURVEYS, from aerial photographs taken in 1961. Field surveys 1960. Printed 1966.

Copies may be obtained from the Map Distribution Office, Department of Mines and Technical Surveys, Ottawa.

(Joins 94N/16E)

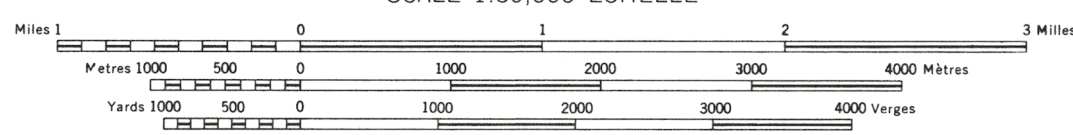
MOUNT MARTIN

YUKON TERRITORY - BRITISH COLUMBIA - NORTHWEST TERRITORIES

Rédigée en 1963, par la DIRECTION DES LEVÉS ET DE LA CARTOGRAPHIE, MINISTÈRE DES MINES ET DES RELEVÉS TECHNIQUES, à partir des photographies aériennes prises en 1961. Levés sur le terrain en 1960. Imprimée en 1966.

Ces cartes sont en vente au Bureau de distribution des cartes ministérielles des Mines et des Relevés techniques, Ottawa.

SCALE 1:50,000 ÉCHELLE



CONTOUR INTERVAL 100 FEET. Elevations in Feet above Mean Sea Level. North American Datum 1927. Transverse Mercator Projection.

Legend table for symbols: Roads, all weather, dry weather, cart track, trail or portage, Railway, normal gauge, single track, Power transmission line, Mine or Open cut, Horizontal control point, with elevation, Bench mark, with elevation.

Legend table for symbols: Building, School, Church, Lighthouse, River with bridge, Stream, intermittent or dry, Lake, intermittent, indefinite, Marsh or Swamp, Depression contours, Barn, Post Office, Cemetery, Grange, Bureau de poste, Cimetière, Phare, Cours d'eau intermittent, ou à sec, Lac intermittent, non imprécise, Marais ou marécage, Courbes de cuvette.