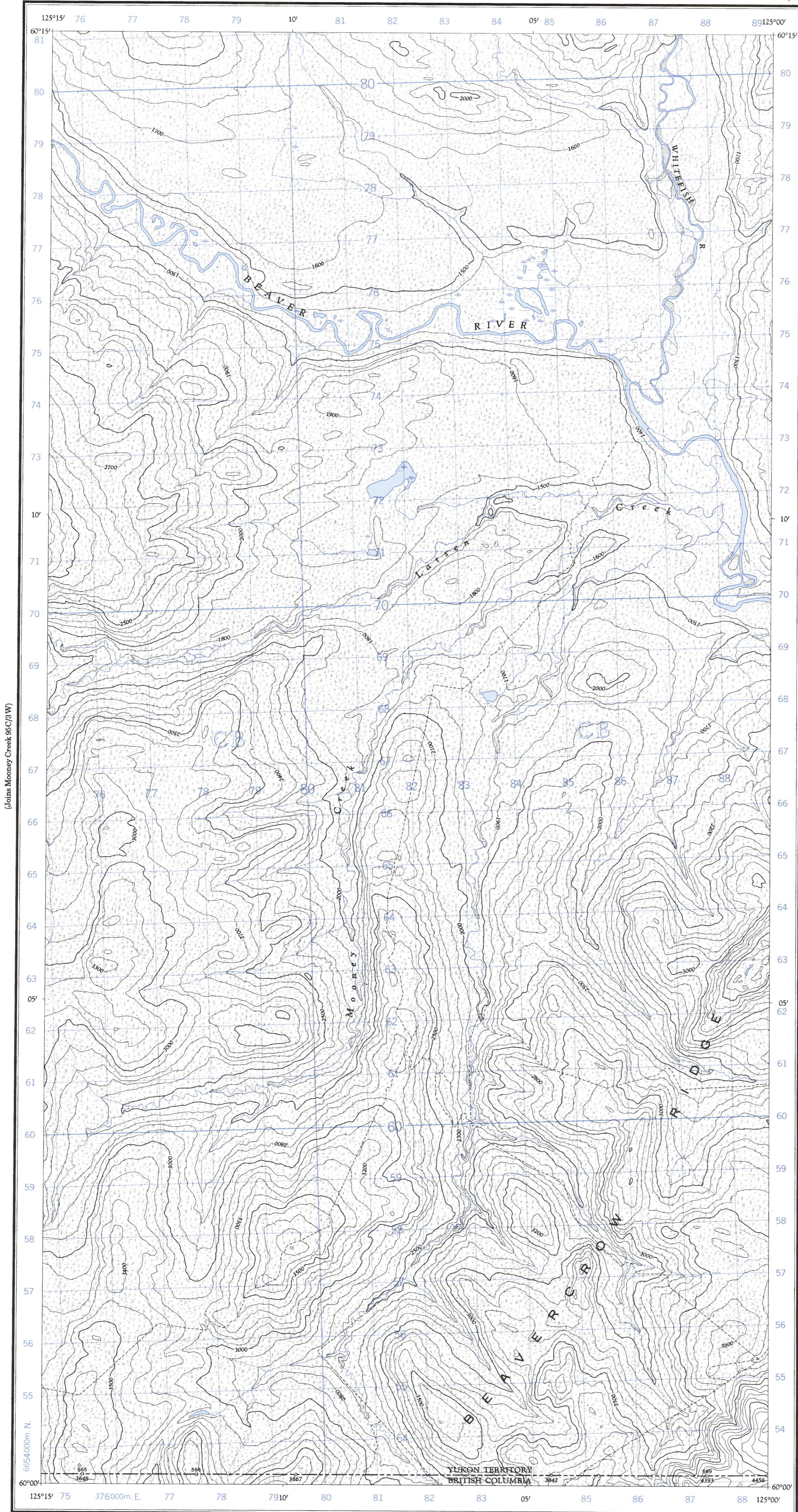


Refer to this map as: 95 C/3 E EDITION 1 ASE SERIES A 722



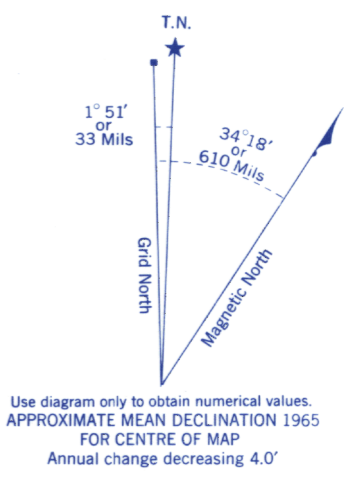
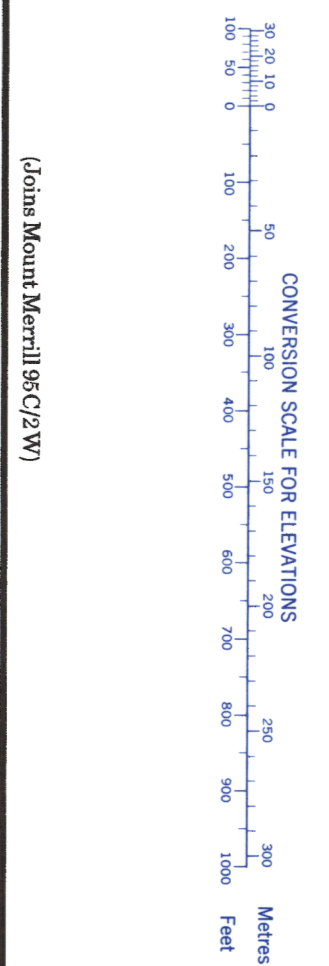
Compiled, 1963, by the SURVEYS AND MAPPING BRANCH, DEPARTMENT OF MINES AND TECHNICAL SURVEYS, from aerial photographs taken in 1961. Field surveys 1960. Printed 1966.

MOONEY CREEK YUKON TERRITORY - BRITISH COLUMBIA

Révisé en 1963, par la DIRECTION DES LEVÉS ET DE LA CARTOGRAPHIE, MINISTÈRE DES MINES ET DES RELEVÉS TECHNIQUES, à partir des photographies aériennes prises en 1961. Levés sur le terrain en 1960. Imprimé en 1966.

Copies may be obtained from the Map Distribution Office, Department of Mines and Technical Surveys, Ottawa.

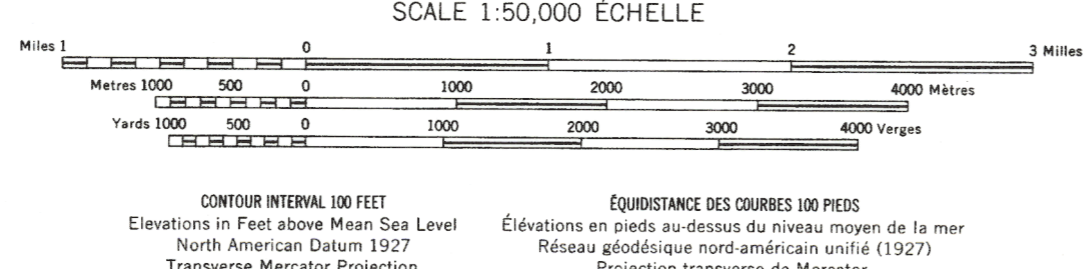
Ces cartes sont en vente au Bureau de distribution des cartes, ministère des Mines et des Relevés techniques, Ottawa.



Grid zone designation 10V, 100,000 M. SQUARE IDENTIFICATION CB. Includes a table for giving a reference to nearest 100 metres with an example for a stream junction.

ONE THOUSAND METRE UNIVERSAL TRANSVERSE MERCATOR GRID ZONE 10

- Roads: all weather, dry weather, cart track, trail or portage, Railway, normal gauge, single track, Power transmission line, Mine or Open cut, Horizontal control point, with elevation, Bench mark, with elevation.



- Building, School, Church, Lighthouse, River with bridge, Stream, Lake intermittent, Marsh or Swamp, Depression contours, Barn, Grange, Post Office, Cemetery.