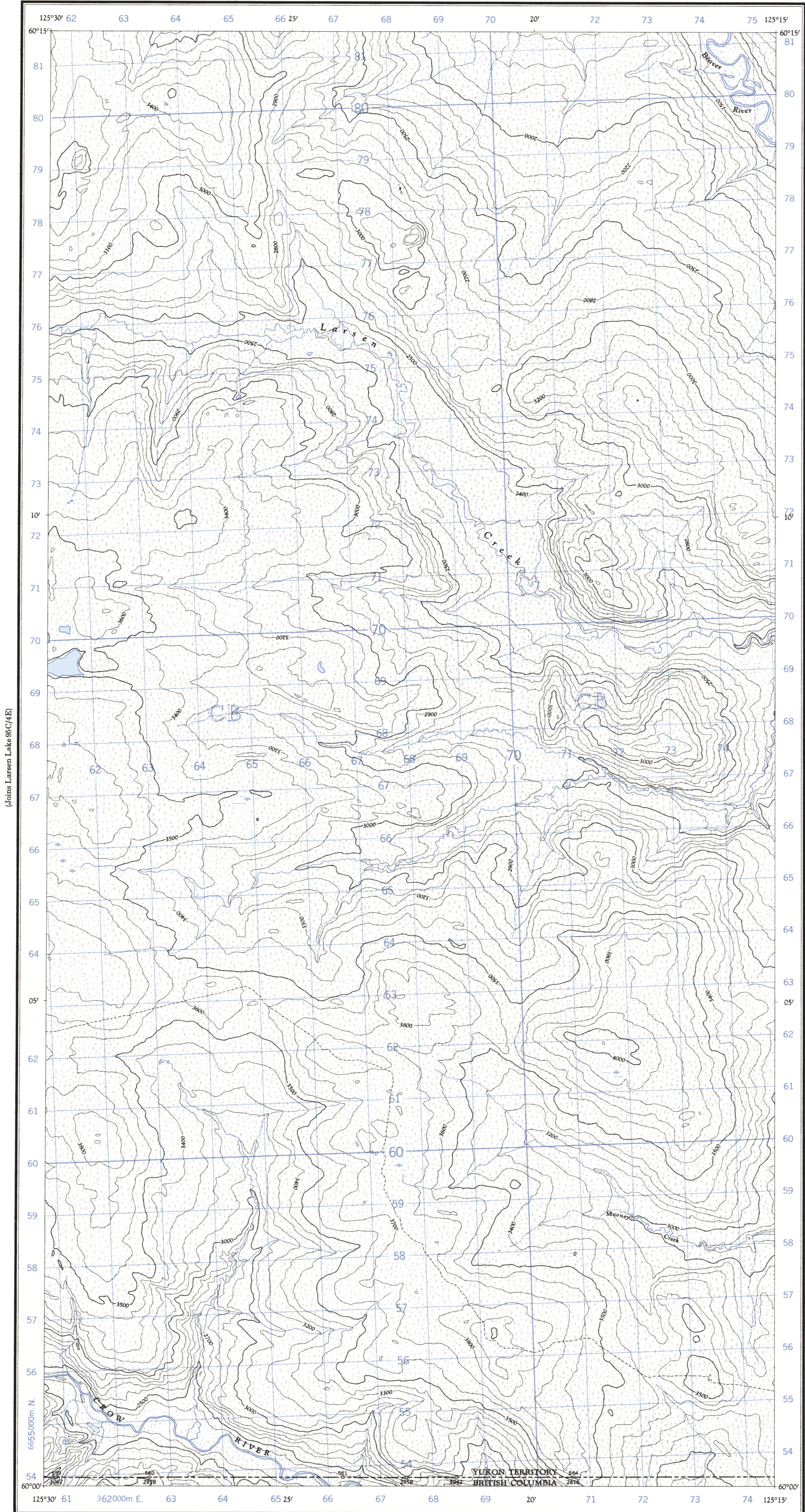
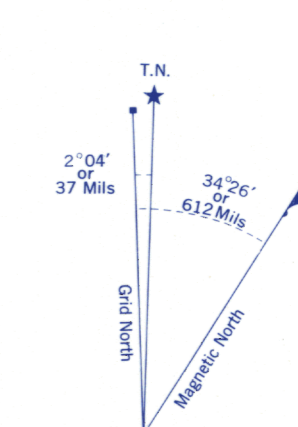
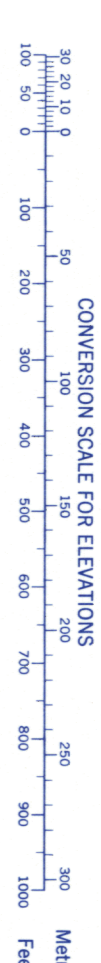


Refer to this map as: 95C/3W EDITION 1 ASE SERIES A 722



(Joins Mooney Creek 95C/3E)

(Joins Larsen Lake 95C/4E)



Use diagram only to obtain numerical values. APPROXIMATE MEAN DECLINATION 1965 FOR CENTRE OF MAP. Annual change decreasing 4.0'

Table with grid zone designation (10V) and 100,000 M. square identification (CB). Includes instructions for giving a reference to nearest 100 metres and an example for a stream junction.

ONE THOUSAND METRE UNIVERSAL TRANSVERSE MERCATOR GRID ZONE 10

Compiled, 1963, by the SURVEYS AND MAPPING BRANCH, DEPARTMENT OF MINES AND TECHNICAL SURVEYS, from aerial photographs taken in 1961. Field surveys 1960. Printed 1966.

Copies may be obtained from the Map Distribution Office, Department of Mines and Technical Surveys, Ottawa.

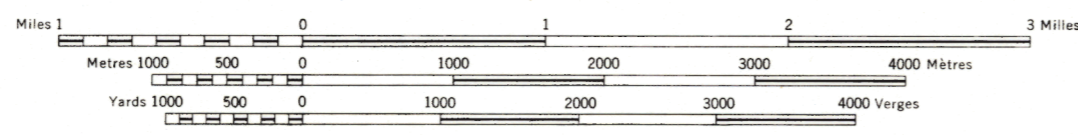
(Joins 94N/14W)

MOONEY CREEK YUKON TERRITORY - BRITISH COLUMBIA

Rédigée en 1963, par la DIRECTION DES LEVÉS ET DE LA CARTOGRAPHIE, MINISTÈRE DES MINES ET DES RELEVÉS TECHNIQUES, d'après des photographies aériennes prises en 1961. Levés sur le terrain en 1960. Imprimé en 1966.

Ces cartes sont en vente au Bureau de distribution des cartes, ministère des Mines et des Relevés techniques, Ottawa.

SCALE 1:50,000 ÉCHELLE



CONTOUR INTERVAL 100 FEET Elevations in Feet above Mean Sea Level North American Datum 1927 Transverse Mercator Projection

ÉQUIDISTANCE DES COURBES 100 PIEDS Élévations en pieds au-dessus du niveau moyen de la mer Réseau géodésique nord-américain unifié (1927) Projection transverse de Mercator

- Legend for roads, routes, weather, cart track, trail or portage, railway, power transmission line, mine, horizontal control point, bench mark.

- Legend for buildings, school, church, lighthouse, river with bridge, stream, lake, marsh, depression contours, barn, post office, cemetery, river with point, intermittent or dry stream, intermittent lake, marsh or swampland, depression contours.